

34  
SECTION

18  
TOWN

06  
RANGE

# ADAMS COUNTY

COUNTY CORNER NO: 118

ROMPORTOL ID: 41806342000

## PUBLIC LAND SURVEY MONUMENT RECORD

TYPE OF MONUMENT: 3/4" IRON ROD  
ADAMS COUNTY COORDINATES, NAD 83 (2007)

N. 226968.779

E. 546839.909

ELEVATION-      DATUM     

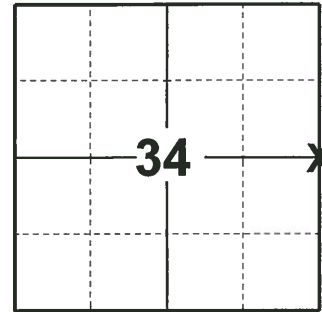
FIELD WORK DATE: 12/12/2019

### BASIS FOR MONUMENT LOCATION

1975 - PLS 917 CORNER SET ON STRAIGHT LINE EQUIDISTANT BETWEEN EXISTING CORNERS PREVIOUSLY SET. USED TAPED TRAVERSE.

1983 - PLS 1478 THE CORNER PIPE WAS PULLED OUT DURING SUMMER OF 1977, PROBABLY BY LANDOWNER TO SOUTH. PIPE WAS USED IN A.M. WHILE SETTING UP TRAVERSE. RETURN AFTER LUNCH, PIPE GONE. SET TEMP NAIL IN HOLE LEFT FROM PIPE AND OBSERVED THAT THE TIES WERE STILL INTACT AT THAT TIME. 3/4"X24" ROD SET FROM TIES.

2019 - PLS 2675 FOUND 3/4" IRON ROD 12" BELOW THE GROUND ON THE NORTH SIDE OF AN OLD SPOILS PILE, AND 3 WITNESSES. THE MONUMENT AGREES WITH ALL WITNESSES. ACCEPTED THE 3/4" IRON ROD AS THE CORNER LOCATION. SET 4 NEW TIES AND MEASURED TO THE EXISTING WITNESSES.



LOCATION  
(INDICATE CORNER BY "X")

SEAL:



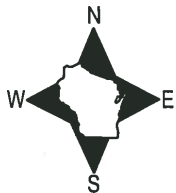
DATA SHOWN HERE ON THIS TIE SHEET IS CORRECT AND COMPLETE TO THE BEST OF MY KNOWLEDGE AND BELIEF.

PROFESSIONAL LAND SURVEYOR

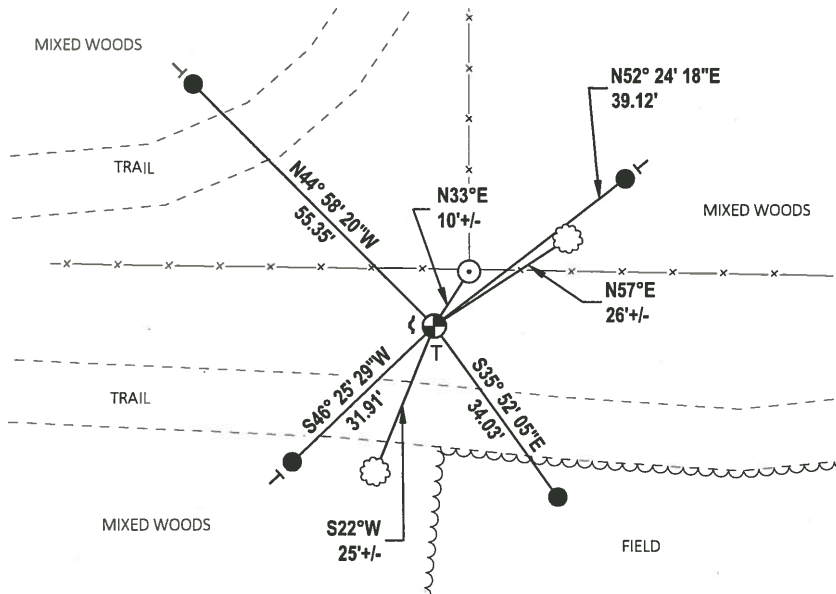
DATE 1/9/2020

### TIE SKETCH

NOTE 1: THE CORNER LANDS 14'± NORTH OF THE SOUTHERLY TRAIL.  
NOTE 2: SE TIE IS SET 18" BELOW GROUND SURFACE.



- SET 3/4" x 18" IRON REBAR, 1.50#/FT
- ⊕ FOUND 3/4" IRON ROD MONUMENT
- ~ STEEL FENCE POST
- VINYL "T" POST
- ☼ WITNESS TREE
- WOOD FENCE POST

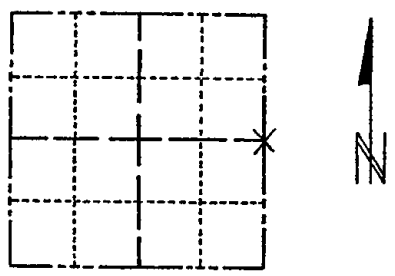


# ADAMS COUNTY

TYPE OF MONUMENT 2 1/2" IRON PIPE <sup>3/4" IRON ROD SET FROM TIES 3-14-83 GR SS</sup>

FIELD BOOK 31 PAGE NO. 19

CORNER NO. 118 (118)  
 SECTION 34  
 TOWN 18  
 RANGE 6



LOCATION (Indicated by 'X')

## BASIS FOR MONUMENT LOCATION

(Use reverse side if necessary)

Show info such as: History of corner, with reference to Vol. and pg. dates, surveyor; exact description of monument replaced; if location computed, by taped or EDM traverse; landowner remarks, etc.

SEAL:

Corner set on straight line equidistant between existing corners previously set. Used taped traverse.

THIS PIPE WAS PULLED OUT DURING SUMMER OF 1977, PROBABLY BY LANDOWNER TO SOUTH. PIPE WAS USED IN A.M. WHILE SETTING UP TRAVERSE. RETURN AFTER LUNCH, PIPE GONE. SET TEMP. NAIL IN HOLE LEFT FROM PIPE & OBSERVED THAT TIES WERE STILL INTACT AT THAT TIME. 3/4" X 24" ROD SET FROM TIES 3-14-83 GR-SS

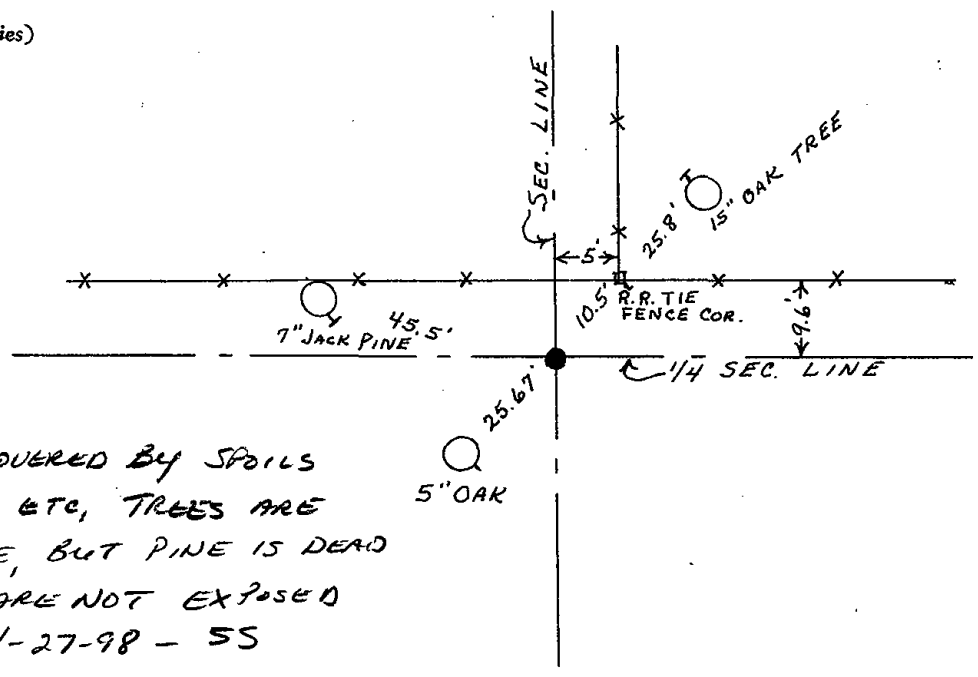


CERTIFIED CORRECT:

R. K. Saylor  
 Registered Land Surveyor  
 DATE: November 26, 1975

## TIE SKETCH 7-29-92-JG-BS O.K.

(Show at least four ties)



CORNER IS COVERED BY SPOILS PILE, STUMPS, ETC, TREES ARE STILL THERE, BUT PINE IS DEAD AND NAILS ARE NOT EXPOSED  
 4-27-98 - SS

ALL TIES ARE STILL PRESENT, CORNER STILL FALLS UNDER SPOILS PILE  
 REVISED 1972 12-20-87! JG-SS