

PUBLIC LAND SURVEY MONUMENT RECORD

TYPE OF MONUMENT: HARRISON
 ADAMS COUNTY COORDINATES, NAD 83 (2007)

N. 224154.753

E. 528490.613

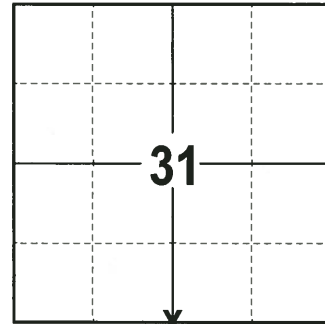
ELEVATION- _____ DATUM _____

FIELD WORK DATE: 06/15/2017

BASIS FOR MONUMENT LOCATION

1974- PLS 1103 RETRACED PLAT BY R. KLEIN, CERTIFIED SURVEY MAP BY H.SIME AND SURVEY BY M.C SMITH. FOUND 1"X24" IRON BAR OVER A CHUNK OF CONCRETE AND SURROUNDED BY 3 BRICKS. REPLACED EXISTING MONUMENT WITH A HARRISON AND TIED OUT.

2017 - PLS 2994 FOUND EXISTING HARRISON MONUMENT 6" BELOW GROUND SURFACE AND 2 WITNESSES. THE MONUMENT AGREES WITH THE EXISTING WITNESSES. ACCEPTED HARRISON AS CORNER LOCATION, SET 4 NEW TIES AND RE-MEASURED TO TIES AND WITNESSES.



LOCATION
 (INDICATE CORNER BY "X")

SEAL:



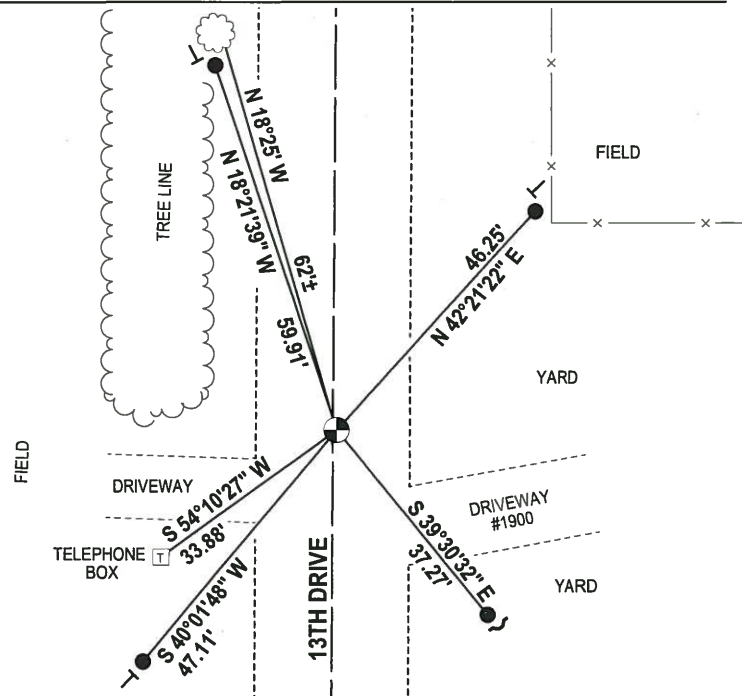
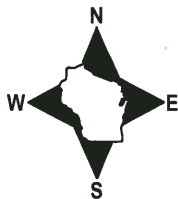
DATA SHOWN HERE ON THIS TIE SHEET IS CORRECT AND COMPLETE TO THE BEST OF MY KNOWLEDGE AND BELIEF.

PROFESSIONAL LAND SURVEYOR

DATE 6/26/17

- TIE SKETCH

NOTE: THE CORNER FALLS 0.5± EAST OF THE CENTERLINE OF 13TH DRIVE.



- 3/4" x 18" IRON REBAR SET, 1.50#/FT
- ⊙ HARRISON FOUND
- ⊘ WITNESS POWER POLE FOUND
- ~ STEEL FENCE POST
- VINYL "T" POST

ADAMS COUNTY

Survey Monument Record

TYPE OF MONUMENT: HARRISON STANDARD

STATE PLANE COORDINATES: N _____

E _____

ELEVATION — M.S.L. DATUM: _____

THETA ANGLE: _____

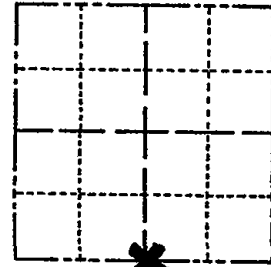
FIELD BOOK: _____ PAGE _____

CORNER NO. 581

SECTION 31

TOWN 18

RANGE 6



LOCATION
(Indicated by 'X')

SEAL:



BASIS FOR MONUMENT LOCATION

(Use reverse side if necessary)

Show info such as: History of corner, with reference to Vol. and pg, dates, surveyor; exact description of monument replaced; if location computed, by taped or EDM traverse; landowner remarks, etc.

Retraced plat by R. Klein, certified survey map by H. Sime, and survey by M.C. Smith, found 1"X24" iron bar, over chunk of concrete and surrounded by three bricks on end. Replaced existing monument with a harrison standard. M.C. Smith's notes are from 1911 and are recorded in the county surveyor's office in Adams County.

2-11-88	GR-SS	OK	
3-11-83	GR-SS	OK	
CORNER	O.K.	10-11-75	SS
"	OK	7-18-78	PK-SS
"	"	7-28-92	JG-BS

CERTIFIED CORRECT:

Dale C. Hagen
Registered Land Surveyor

DATE: 12-30-74

TIE SKETCH 1-22-98 - JG - OK

(Show at least four ties) 20" BIK OAK / BT

OK - 12-10-02 SS
OK, 11-26-07 - JG

FIELD

FIELD

FIELD

RESIDENTIAL

