

34
SECTION

19
TOWN

07
RANGE

ADAMS COUNTY

COUNTY CORNER NO: 129

ROMPORTOL ID: 41907340000

PUBLIC LAND SURVEY MONUMENT RECORD

TYPE OF MONUMENT: HARRISON
ADAMS COUNTY COORDINATES, NAD 83 (2007)

N. 256036.179

E. 578063.567

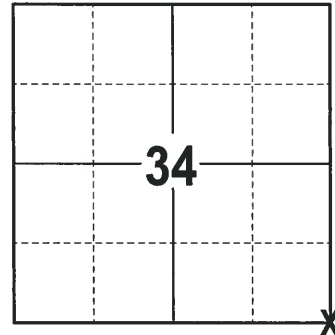
ELEVATION- _____ DATUM _____

FIELD WORK DATE: 01/31/2018

BASIS FOR MONUMENT LOCATION

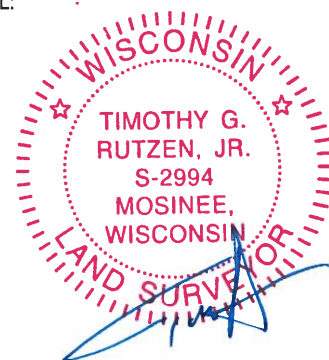
1973 - PLS 878 EXCAVATED AREA WITH A BACKHOE AND FOUND A POINT THAT APPEARED TO HAVE BEEN MARKED BY A 2"X30" IRON PIPE, ALTHOUGH THE PIPE WAS MISSING. POINT WAS VERIFIED BY A TRAVERSE OF THE ENTIRE SECTION. SET A HARRISON MONUMENT AT LOCATION AND TIED OUT.

2018 - PLS 2994 FOUND A HARRISON MONUMENT 2" BELOW THE ROAD SURFACE, 1 NGS MONUMENT TO BE USED AS A TIE AND 1 WITNESS. THE MONUMENT AGREES WITH THE EXISTING WITNESS. ACCEPTED THE HARRISON MONUMENT AS THE CORNER LOCATION. SET 3 NEW TIES AND MEASURED TO THE TIES, NGS MONUMENT AND WITNESS.



LOCATION
(INDICATE CORNER BY "X")

SEAL:



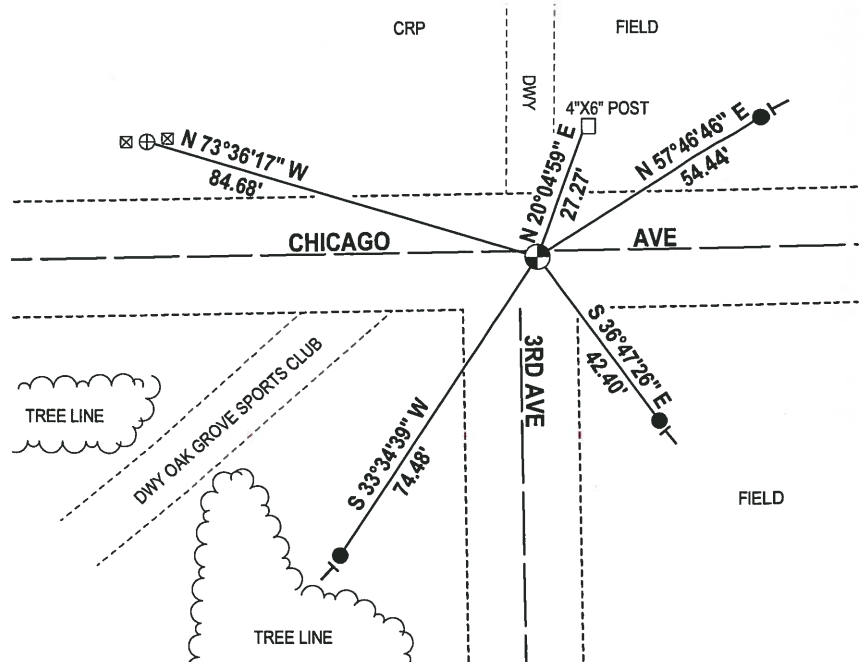
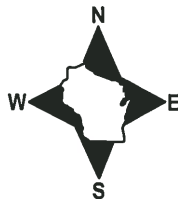
DATA SHOWN HERE ON THIS TIE SHEET IS CORRECT AND COMPLETE TO THE BEST OF MY KNOWLEDGE AND BELIEF.

PROFESSIONAL LAND SURVEYOR

DATE 3-1-18

- TIE SKETCH

NOTE: THE CORNER FALLS 1± SOUTH OF THE CENTERLINE OF CHICAGO AVE AND 4± EAST OF THE CENTERLINE OF 3RD AVE.



- 3/4" x 18" IRON REBAR SET, 1.50#/FT
- ⊕ NGS MONUMENT (COLBURN S) FOUND
- ⊙ HARRISON FOUND
- ⊠ 4" x 4" ORANGE POST
- VINYL "T" POST

ADAMS COUNTY

Survey Monument Record

TYPE OF MONUMENT: Harrison STD

STATE PLANE COORDINATES: N _____
E _____

ELEVATION — M.S.L. DATUM: _____

THETA ANGLE: _____

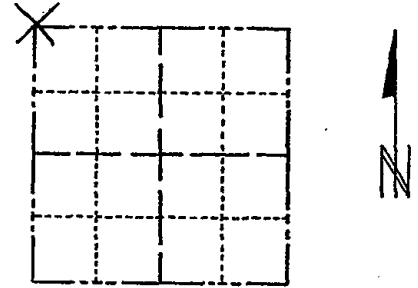
FIELD BOOK: 108 PAGE 16+49

CORNER NO. 256

SECTION 2

TOWN 18

RANGE 7



LOCATION
(Indicated by 'X')

SEAL:

BASIS FOR MONUMENT LOCATION

(Use reverse side if necessary)

Show info such as: History of corner, with reference to Vol. and pg. dates, surveyor; exact description of monument replaced; if location computed, by taped or EDM traverse; landowner remarks, etc.

Excavated area with backhoe. Found a point that appeared to have been marked by a 2"x30" iron pipe, although the pipe was missing. Point verified by a traverse of the entire section.



CORNER	O.K.	3-28-77	GR-SS
"	"	3-17-82	GR-SS
"	"	2-9-87	GR-SS
"	"	11-26-91	KZ-SS
2-GANG, 2-NEW		2-18-97	JG-SS
OK		GR-36	11/18/02

CERTIFIED CORRECT:

Anthony B. Kiedrowski
Registered Land Surveyor

DATE: April 73

TIE SKETCH OK, 4-11-07-JG

(Show at least four ties)

