

PUBLIC LAND SURVEY MONUMENT RECORD

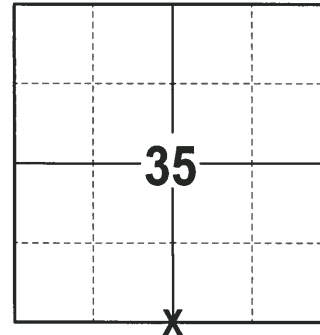
TYPE OF MONUMENT: HARRISON (BROKEN-TOP)
 ADAMS COUNTY COORDINATES, NAD 83 (2007)

N. 256049.775

E. 580707.090

ELEVATION- DATUM

FIELD WORK DATE: 01/31/2018



LOCATION
 (INDICATE CORNER BY "X")

BASIS FOR MONUMENT LOCATION

1973 - PLS 878 CALCULATED LOCATION ON A STRAIGHT LINE AND EQUIDISTANT BETWEEN SECTION CORNERS. NO EXCAVATION WAS DONE. SET A HARRISON MONUMENT AT THE CALCULATED LOCATION AND TIED OUT.

2018 - PLS 2994 FOUND A HARRISON MONUMENT WITH A BROKEN-TOP 2" BELOW THE ROAD SURFACE. DIDN'T FIND ANY EVIDENCE OF ANY OF THE WITNESSES. ACCEPTED THE HARRISON MONUMENT WITH A BROKEN-TOP AS THE BEST EVIDENCE OF THE CORNER LOCATION. SET 4 NEW TIES AND MEASURED TO THE TIES.

SEAL:



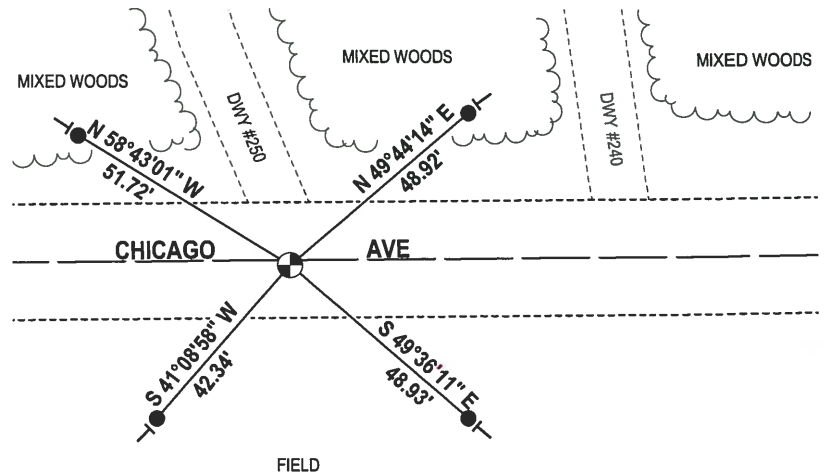
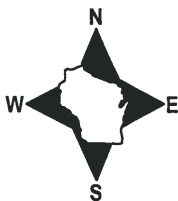
DATA SHOWN HERE ON THIS TIE SHEET IS CORRECT AND COMPLETE TO THE BEST OF MY KNOWLEDGE AND BELIEF.

PROFESSIONAL LAND SURVEYOR

DATE 3-1-18

- TIE SKETCH

NOTE: THE CORNER FALLS 1 1/2" SOUTH OF THE CENTERLINE OF CHICAGO AVE.



- 3/4" x 18" IRON REBAR SET, 1.50#/FT
- ⊙ HARRISON (BROKEN-TOP) FOUND
- VINYL "T" POST

ADAMS COUNTY

Survey Monument Record

TYPE OF MONUMENT: Harrison std.

STATE PLANE COORDINATES: N _____

E _____

ELEVATION — M.S.L. DATUM: _____

THETA ANGLE: _____

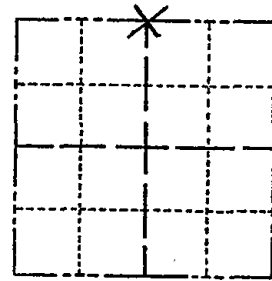
FIELD BOOK: 108 PAGE 15

CORNER NO. 255

SECTION 2

TOWN 18

RANGE 7



LOCATION
(Indicated by 'X')

SEAL:

BASIS FOR MONUMENT LOCATION

(Use reverse side if necessary)

Show info such as: History of corner, with reference to Vol. and pg, dates, surveyor; exact description of monument replaced; if location computed, by taped or EDM traverse; landowner remarks, etc.

Set on a straight line equidistant between section corners. No excavation.



CERTIFIED CORRECT:

Anthony B. Kiedrowski
Registered Land Surveyor

DATE: April '73

CORNER O.K. 3-28-77 GR-55
 " " 3-17-82 GR-55
 " " 2-9-87 GR-55
 TOP BROKEN 1-26-91 KZ-55
 2 NEW TIES - 2-18-97 JG-55
 OK 1-18-02 GR-56
 OK, 4-11-07 JG

TIE SKETCH

(Show at least four ties)

