

PUBLIC LAND SURVEY MONUMENT RECORD

TYPE OF MONUMENT: HARRISON
 ADAMS COUNTY COORDINATES, NAD 83 (2007)

N. 253530.078

E. 572749.858

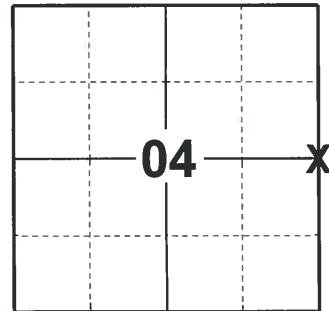
ELEVATION- DATUM

FIELD WORK DATE: 01/15/2020

BASIS FOR MONUMENT LOCATION

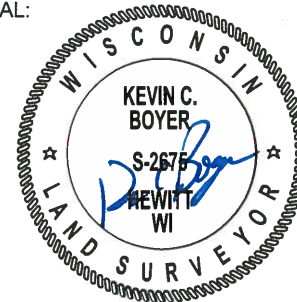
1983 - PLS 1551 EXCAVATED CORNER AREA BY HAND TO 6" BELOW THE ORIGINAL GROUND SURFACE, NO EVIDENCE OF THE ORIGINAL CORNER WAS FOUND. SIGNS OF THE ORIGINAL BEARING TREES ARE ALSO GONE. NO SUBSEQUENT RECORD OF REMONUMENTATION OF THIS CORNER WAS FOUND. CORNER WAS RESET PROPORTIONALLY ON A STRAIGHT LINE BETWEEN ADJACENT SECTION CORNERS. THIS LOCATION AGREES WITH AN OLD FENCE LINE ON THE NORTH LINE OF THE SE NE OF SECTION 4 AND IS WITHIN 3' OF AN EXTENSION OF AN OLD FENCE FROM THE CENTER OF SECTION 3 THROUGH A POINT NEAR THE SE CORNER OF THE SW NW OF SECTION 3. IT IS ALSO NEAR A DOUBLE DISTANCE FROM THE E1/4 OF SECTION 3 THROUGH THE CENTER OF SECTION 3, WHICH FALLS ON AN OLD N-S FENCE.

2020 - PLS 2675 FOUND HARRISON MONUMENT 6"± BELOW THE ROAD SHOULDER, AND 2 WITNESSES. THE MONUMENT AGREES WITH BOTH WITNESSES. ACCEPTED THE HARRISON AS THE CORNER LOCATION. SET 4 NEW TIES AND MEASURED TO THE EXISTING WITNESSES.



LOCATION
 (INDICATE CORNER BY "X")

SEAL:



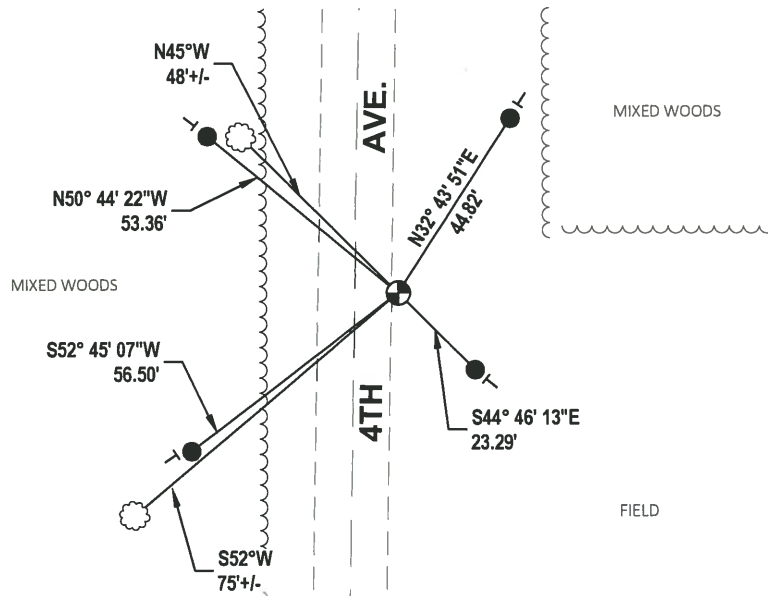
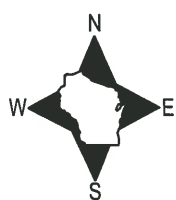
DATA SHOWN HERE ON THIS TIE SHEET IS CORRECT AND COMPLETE TO THE BEST OF MY KNOWLEDGE AND BELIEF.

PROFESSIONAL LAND SURVEYOR

DATE 3/9/2020

- TIE SKETCH

NOTE: THE CORNER LANDS 9'± EAST OF CENTERLINE OF 4TH AVE.



- SET 3/4" x 18" IRON REBAR, 1.50#/FT
- ⊕ FOUND HARRISON MONUMENT
- ⊥ VINYL "T" POST
- ☁ WITNESS TREE

U.S. PUBLIC LAND SURVEY MONUMENT RECORD

ADAMS COUNTY

TYPE OF MONUMENT: Standard Harrison

STATE PLANE COORDINATES: N _____
E _____

ELEVATION — M.S.L. DATUM: _____

THETA ANGLE: _____

FIELD BOOK: Adams County PAGE 74

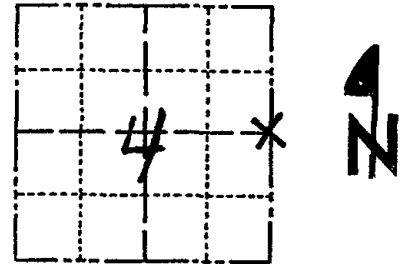
DRAWN BY: D. Riesop

CORNER NO. 17

SECTION 4

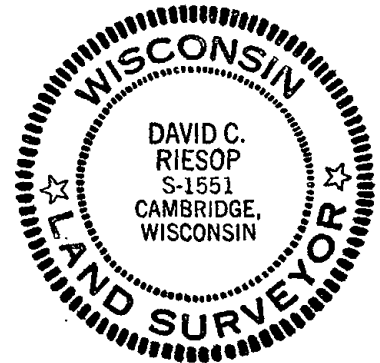
TOWN 18N

RANGE 7E



LOCATION
(Indicated by 'X')

SEAL:



DATA SHOWN HERE ON
CERTIFIED CORRECT:

David C. Riesop
Registered Land Surveyor

DATE: 9/30/83

BASIS FOR MONUMENT LOCATION

Show info such as: History of corner, with reference to Vol. and pg., dates, surveyor; exact description of monument replaced; if location computed, by taped or EDM traverse; landowner remarks, etc. (Use reverse side if necessary) (in conformance with Section A-E 502 of the Wisconsin Administrative Code)

Excavated corner area by hand to 6" below the original ground surface, no evidence of the original corner was found. Signs of the original bearing trees are also gone. No subsequent record of remonumentation of this corner was found.

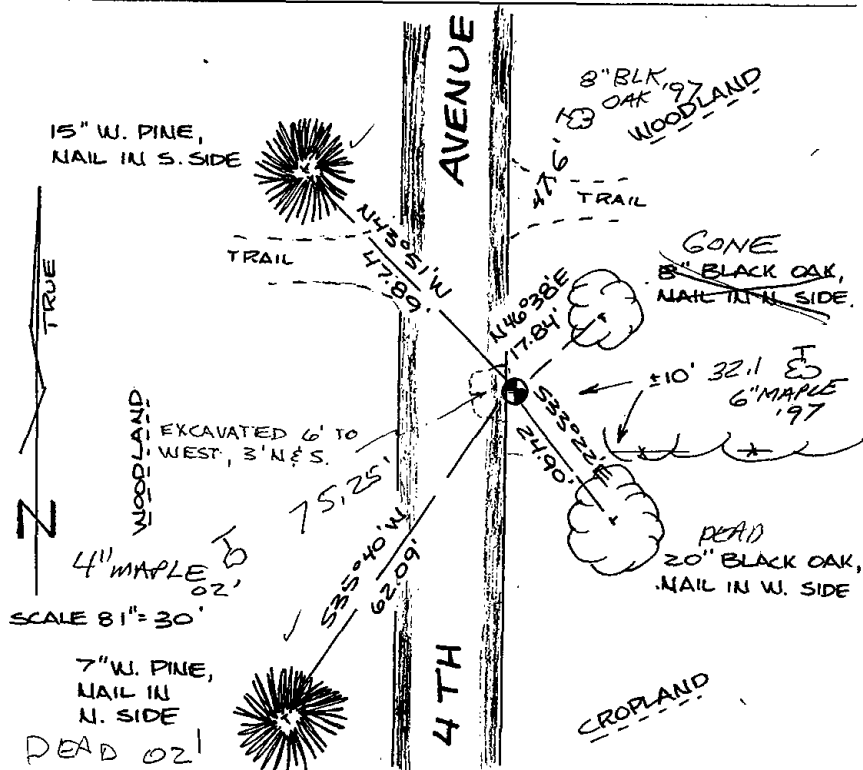
Corner was reset proportionally on a straight line between adjacent section corners.

This location agrees with an old fence line on the North line of the SE NE of Sec. 4 and is within 3' of an extension of an old fence from the center of Sec. 3 through a point near the SE corner of the SW NW of Sec. 3. It is also near a double distance from the E 1/4 of 3 through the center of Sec. 3, which falls on an old N-S fence.

TIE SKETCH

Show at least four ties, also fence lines, roads, topo, size and type of witness trees and if off road - best way to arrive at corner.

12' EAST FROM EAST
EDGE PAVEMENT



MAINTENANCE RECORD

Date	Init.	Remarks
3-9-87	GR	OK
11-26-91	KZ-SS	"
12-31-97	JG-SS	2 NEW TIES
1-18-02	GRJG	1 NEW
2-21-07	JG-SS	OK

