

PUBLIC LAND SURVEY MONUMENT RECORD

TYPE OF MONUMENT: HARRISON
ADAMS COUNTY COORDINATES, NAD 83 (2007)

N. 253611.571

E. 578049.334

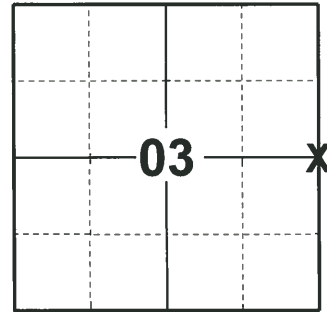
ELEVATION- --- DATUM ---

FIELD WORK DATE: 01/06/2020

BASIS FOR MONUMENT LOCATION

1973 - PLS 878 SET HARRISON MONUMENT AT PROPORTIONATE DISTANCES BETWEEN SECTION CORNERS AS COMPARED WITH ORIGINAL NOTES. NO EXCAVATION BECAUSE OF FILL IN ROAD.

2020 - PLS 2675 FOUND HARRISON 4"± BELOW THE ROAD SURFACE, AND 3 WITNESSES. THE MONUMENT AGREES WITH THE WITNESSES. ACCEPTED THE HARRISON AS THE CORNER LOCATION. SET 4 NEW TIES AND MEASURED TO THE EXISTING WITNESSES.



LOCATION

(INDICATE CORNER BY "X")

SEAL:



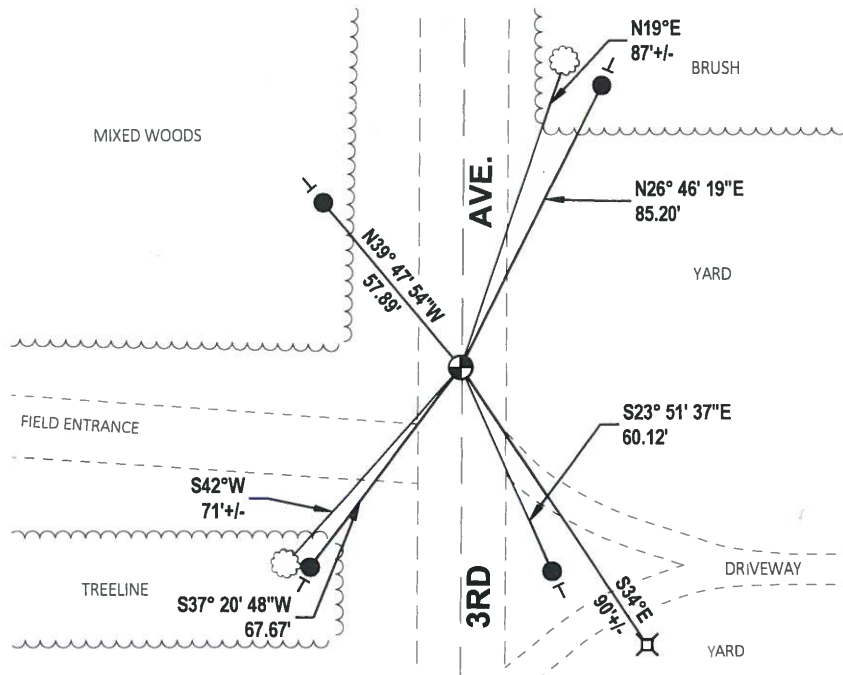
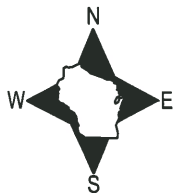
DATA SHOWN HERE ON THIS TIE SHEET IS CORRECT AND COMPLETE TO THE BEST OF MY KNOWLEDGE AND BELIEF.

PROFESSIONAL LAND SURVEYOR

DATE 3/9/2020

- TIE SKETCH

NOTE: THE CORNER LANDS 0.50'± WEST OF CENTERLINE OF 3RD AVE.



- SET 3/4" x 18" IRON REBAR, 1.50#/FT
- ⊕ FOUND HARRISON MONUMENT
- VINYL "T" POST
- ☼ WITNESS TREE
- ⊗ SOUTHWEST CORNER OF TEL. PED.

ADAMS COUNTY

Survey Monument Record

TYPE OF MONUMENT: Harrison std.

STATE PLANE COORDINATES: N _____

E _____

ELEVATION — M.S.L. DATUM: _____

THETA ANGLE: _____

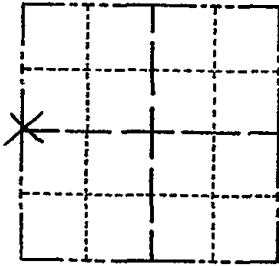
FIELD BOOK: 108 PAGE 17

CORNER NO. 257 ⁽¹⁸⁾

SECTION 2

TOWN 18

RANGE 7



LOCATION
(Indicated by 'X')

SEAL:



CERTIFIED CORRECT:

Anthony B. Kiedrowski
Registered Land Surveyor

DATE: April '73

BASIS FOR MONUMENT LOCATION

(Use reverse side if necessary)

Show info such as: History of corner, with reference to Vol. and pg, dates, surveyor; exact description of monument replaced; if location computed, by taped or EDM traverse; landowner remarks, etc.

Set at proportionate distances between section corners as compared with original notes.
No excavation because of fill in road.

NEW TIES		1-18-02	GR-56
CORNER	O.K.	3-28-77	GR-55
"	"	5-17-82	PK-55
"	"	3-9-87	GR-55
"	"	11-26-91	KZ-55
1 Gone - 1 New		2-18-97	JG-55
	OK,	4-11-07	JG

TIE SKETCH

(Show at least four ties)

