

## PUBLIC LAND SURVEY MONUMENT RECORD

TYPE OF MONUMENT: 2-3/8" O.D. IRON PIPE  
 ADAMS COUNTY COORDINATES, NAD 83 (2007)

N. 250894.786

E. 567391.757

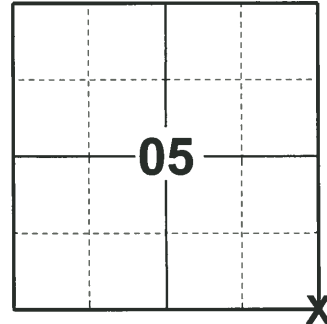
ELEVATION- - - - DATUM - - - -

FIELD WORK DATE: 01/06/2020

### BASIS FOR MONUMENT LOCATION

1983 - PLS 1551 RE-ESTABLISHED THE CORNER ON A LINE EXTENDED FROM THE NORTHEAST CORNER OF THE SECTION, THROUGH THE E1/4 CORNER AS SET FROM ORIGINAL BEARING TREE, USING THE RECORD DISTANCE ALONG THE EAST LINE OF THE SE1/4 AS MEASURED BY M.C. SMITH IN HIS 1902 SURVEY OF SECTION 5 (VOL. 1, PG. 22)

2020 - PLS 2675 FOUND 2-3/8" O.D. IRON PIPE 12"± ABOVE THE ICE SURFACE, AND 4 WITNESS TREES. THE MONUMENT AGREES WITH ALL 4 WITNESS TREES. ACCEPTED THE 2-3/8" O.D. IRON PIPE AS THE CORNER LOCATION. SET 4 NEW TIES AND MEASURED TO THE EXISTING WITNESS TREES.



**LOCATION**  
 (INDICATE CORNER BY "X")

SEAL:

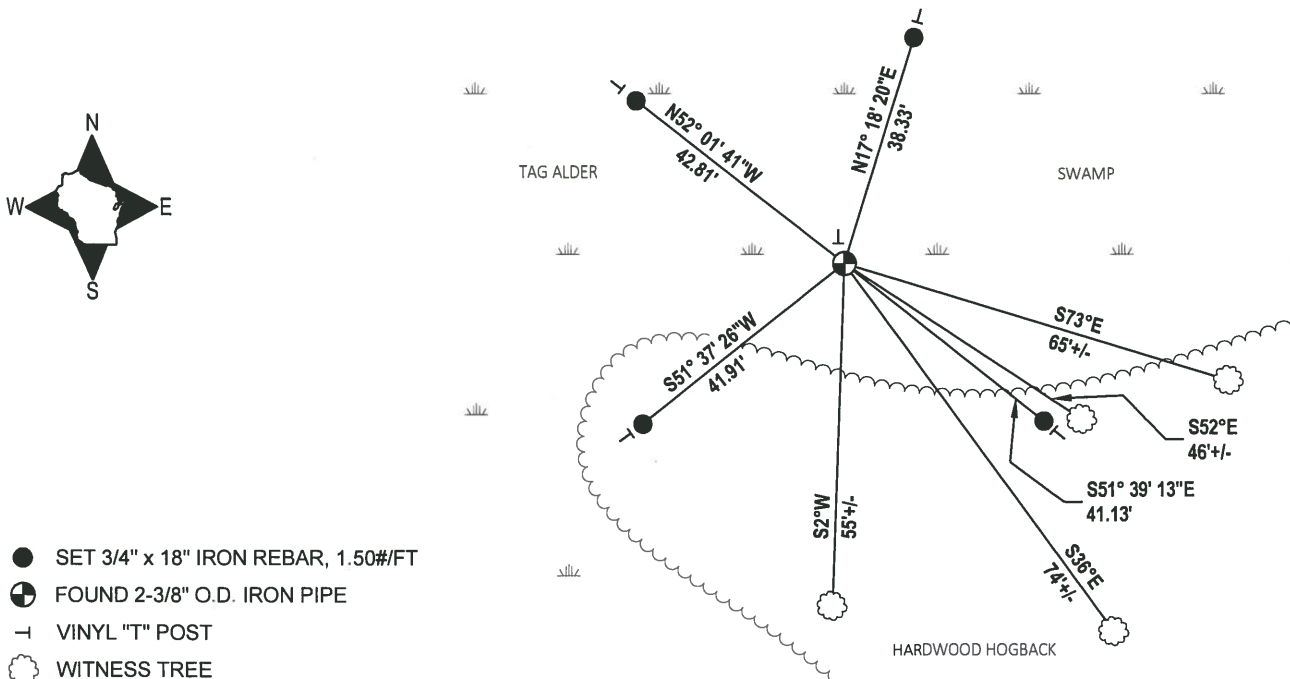


DATA SHOWN HERE ON THIS TIE SHEET IS CORRECT AND COMPLETE TO THE BEST OF MY KNOWLEDGE AND BELIEF.

PROFESSIONAL LAND SURVEYOR

DATE 3/9/2020

### - TIE SKETCH



# U.S. PUBLIC LAND SURVEY MONUMENT RECORD

## ADAMS COUNTY

TYPE OF MONUMENT: 2" I.D. x 60" galv. iron pipe

STATE PLANE COORDINATES: N \_\_\_\_\_  
E \_\_\_\_\_

ELEVATION — M.S.L. DATUM: \_\_\_\_\_

THETA ANGLE: \_\_\_\_\_

FIELD BOOK: Adams County PAGE 44

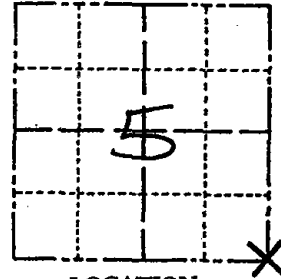
DRAWN BY: D. Riesop

CORNER NO. 25

SECTION 5

TOWN 18N

RANGE 7E



LOCATION  
(Indicated by 'X')



### BASIS FOR MONUMENT LOCATION

Show info such as: History of corner, with reference to Vol. and pg., dates, surveyor; exact description of monument replaced; if location computed, by taped or EDM traverse; landowner remarks, etc. (Use reverse side if necessary) (in conformance with Section A-E 502 of the Wisconsin Administrative Code)

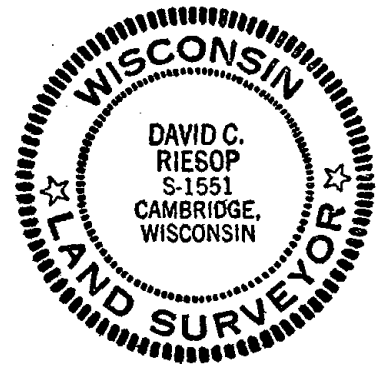
Searched area for wood stake and bearing trees, nothing was found.

Corner was re-established on a line extended from the Northeast corner of the section, through the E 1/4 corner as set from original bearing tree, using the record distance along the East line of the S.E. 1/4 as measured by M.C. Smith in his 1902 survey of Section 5 (Vol. 1, Page 22).

This position fits Smith's distance along the South line of Section 5 within 0.5 feet.

~~END PATH THRU SWAMP (MIN. SOUTH OF GREEN CABIN ON RIDGE AT ROAD - FOGGOW PATH 10 MINUTES TO ARRIVE AT CABIN. CABIN 490' W. OF DRIVEWAY ENTRY FIRE # 495 3/4" NW IN NORTH DITCH - CABIN IS NOT VISIBLE FROM ROAD~~

SEAL:



DATA SHOWN HERE ON CERTIFIED CORRECT:

*David Riesop*  
Registered Land Surveyor

DATE: 5/26/83

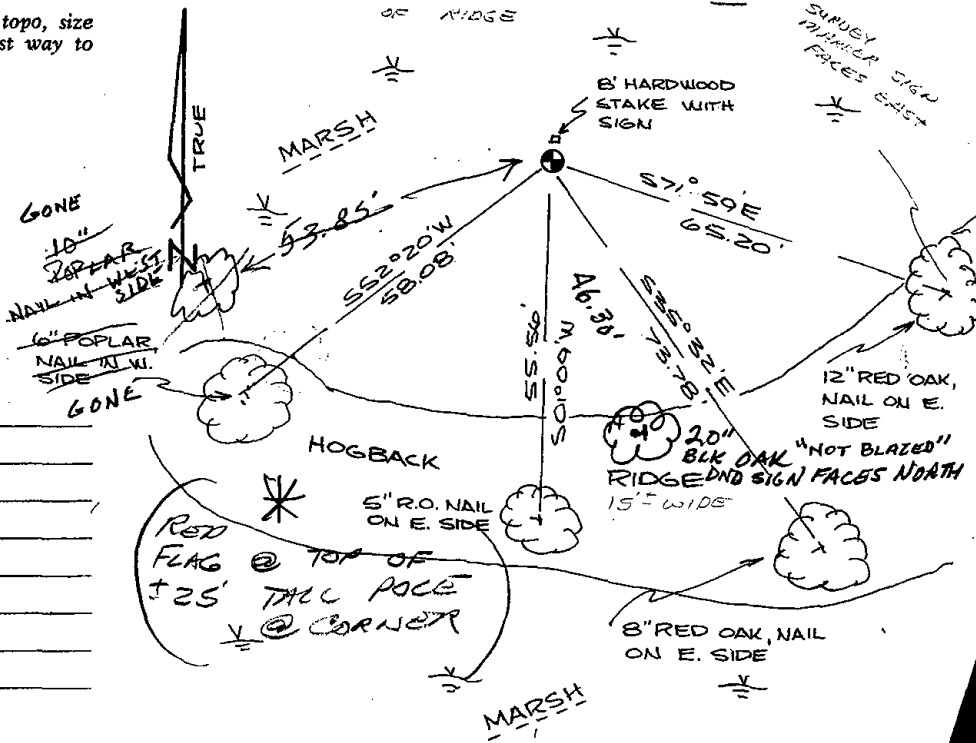
### TIE SKETCH

Show at least four ties, also fence lines, roads, topo, size and type of witness trees' and if off road - best way to arrive at corner.

SCALE 1" = 30'

CORNER IS 150' EAST OF (UNIDENTIFIED) TREE STAND AT WEST END OF RIDGE

filed for record this 9th  
day of JUNE 1983  
per 59.60 Wisconsin Statutes.  
*[Signature]*  
ADAMS COUNTY SURVEYOR



### MAINTENANCE RECORD

Date	Init.	Remarks
12-4-87	SS	OK
6-8-92	JB-BS	1-GONE, 1-NEW
12-31-97	JG	OK
1-22-02	JG	1-GONE, 1-NEW
2-21-07	JG	OK

