

PUBLIC LAND SURVEY MONUMENT RECORD

TYPE OF MONUMENT: HARRISON
 ADAMS COUNTY COORDINATES, NAD 83 (2007)

N. 250946.580

E. 580695.212

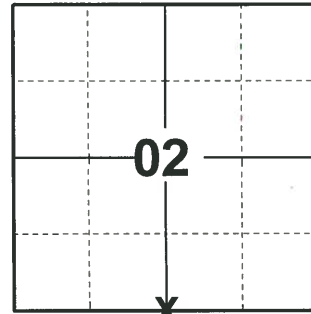
ELEVATION- DATUM

FIELD WORK DATE: 01/03/2020

BASIS FOR MONUMENT LOCATION

1973 - PLS 878 EXCAVATED WITH BACKHOE. FOUND DEFINITE REMNANT OF ORIGINAL WOOD POST. MONUMENTED THAT POINT WITH A HARRISON MONUMENT.

2020 - PLS 2675 FOUND HARRISON 4"± BELOW THE ROAD SURFACE, 1 TIE, AND 1 WITNESS. THE MONUMENT AGREES WITH THE TIE AND WITNESS. ACCEPTED THE HARRISON AS THE CORNER LOCATION. SET 2 NEW TIES AND MEASURED TO A FOUND PROPERTY IRON, EXISTING TIE, AND WITNESS.



LOCATION

(INDICATE CORNER BY "X")

SEAL:



DATA SHOWN HERE ON THIS TIE SHEET IS CORRECT AND COMPLETE TO THE BEST OF MY KNOWLEDGE AND BELIEF.

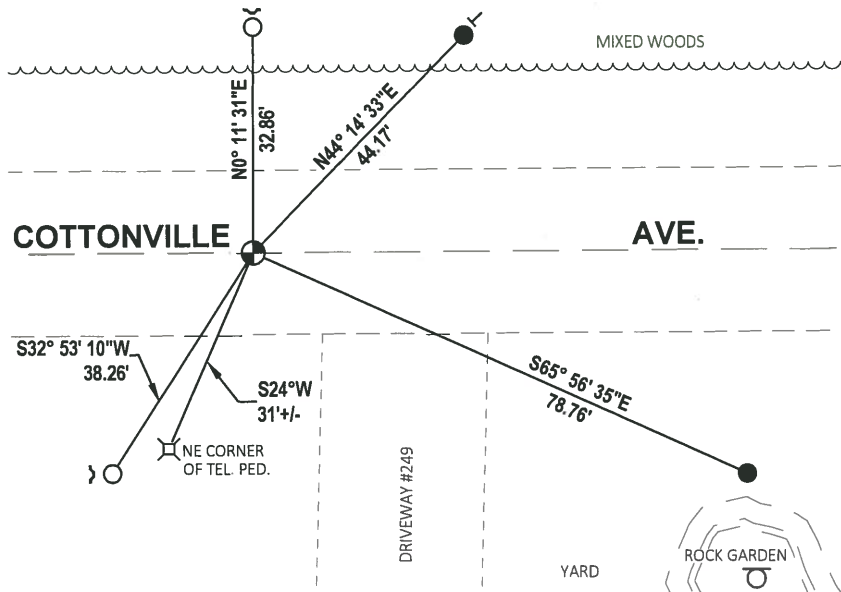
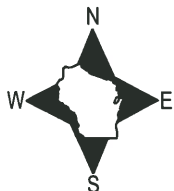
PROFESSIONAL LAND SURVEYOR

DATE 3/9/2020

- TIE SKETCH

NOTE 1: THE CORNER LANDS ON THE CENTERLINE OF COTTONVILLE AVE.

NOTE 2: THE SE TIE LANDS 2'± NORTH OF A FIRE # SIGN.



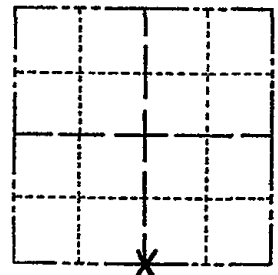
- SET 3/4" x 18" IRON REBAR, 1.50#/FT
- FOUND 3/4" IRON ROD
- ⊕ FOUND HARRISON MONUMENT
- ∩ STEEL FENCE POST
- | VINYL "T" POST
- FIRE #249 SIGN

ADAMS COUNTY

Survey Monument Record

TYPE OF MONUMENT: 30" HARRISON
 STATE PLANE COORDINATES: N _____
 E _____
 ELEVATION — M.S.L. DATUM: _____
 THETA ANGLE: _____
 FIELD BOOK: 108 PAGE 57

CORNER NO. 295⁽³⁰⁾
 SECTION 2
 TOWN 18
 RANGE 7



LOCATION
(Indicated by 'X')

BASIS FOR MONUMENT LOCATION

(Use reverse side if necessary)

Show info such as: History of corner, with reference to Vol. and pg, dates, surveyor; exact description of monument replaced; if location computed, by taped or EDM traverse; landowner remarks, etc.

Excavated with backhoe. Found definite remnant of original wood post. Monumented that point.

SEAL:



CORNER	O.R.	3-28-77	GA-SS
"	"	5-17-82	PK-SS
"	"	3-9-87	GR-SS
"	"	11-26-91	KZ-SS
1-NEW TIE		1-18-02	JG
OK		4-06-07	GPR

CERTIFIED CORRECT:

Anthony B. Kiedrowski
 Registered Land Surveyor
 DATE: 9/18/73

TIE SKETCH

(Show at least four ties)

Ties are to nail and disc.

