

## PUBLIC LAND SURVEY MONUMENT RECORD

TYPE OF MONUMENT: RAILROAD SPIKE  
 ADAMS COUNTY COORDINATES, NAD 83 (2007)

N. 250955.537

E. 583375.569

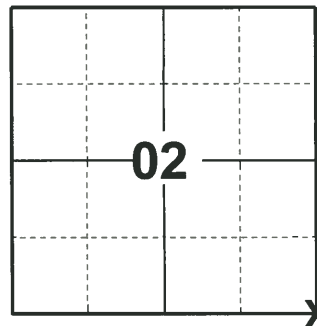
ELEVATION- - - - DATUM - - - -

FIELD WORK DATE: 01/03/2020

### BASIS FOR MONUMENT LOCATION

1973 - PLS 878 EXCAVATED WITH BACKHOE FOUND 6"X6"X8" STONE WITH A PIECE OF SCRAPE IRON ALONGSIDE. REPLACED WITH HARRISON MONUMENT.

2020 - PLS 2675 FOUND MAG NAIL IN THE ROAD SURFACE, REMOVED AND FOUND RAIL ROAD SPIKE 12"± BELOW THE ROAD SURFACE, 1 TIE, AND 1 WITNESS. REMOVED THE RAIL ROAD SPIKE AND FOUND NO EVIDENCE OF A HARRISON. THE RAIL ROAD SPIKE LOCATION AGREES WITH THE TIE AND WITNESS. ACCEPTED THIS LOCATION FOR THE CORNER LOCATION. RE-SET THE RAIL ROAD SPIKE IN THE LOCATION. SET 3 NEW TIES AND MEASURED TO THE EXISTING TIE AND WITNESS.



LOCATION

(INDICATE CORNER BY "X")

SEAL:



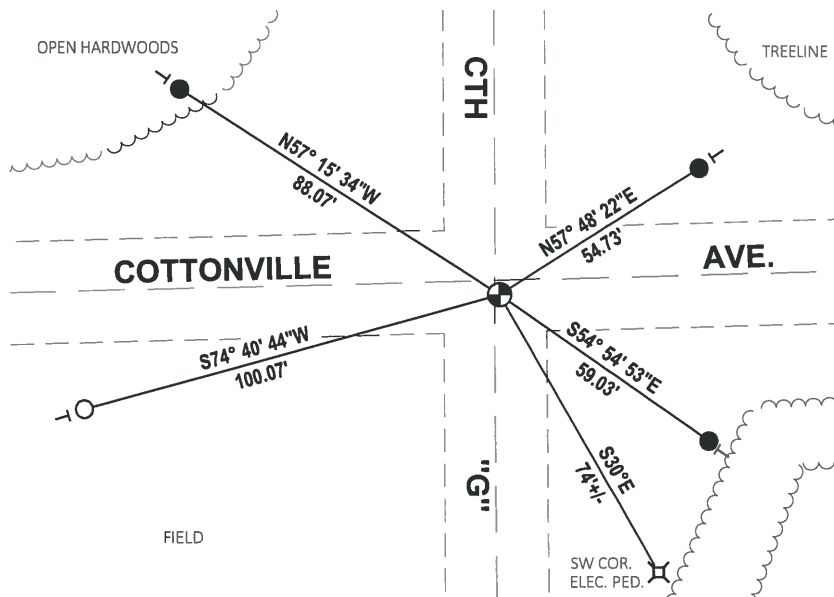
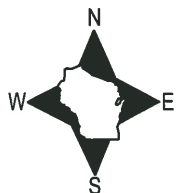
DATA SHOWN HERE ON THIS TIE SHEET IS CORRECT AND COMPLETE TO THE BEST OF MY KNOWLEDGE AND BELIEF.

PROFESSIONAL LAND SURVEYOR

DATE 3/9/2020

### - TIE SKETCH

NOTE: THE CORNER LANDS 3.4'± SOUTH OF COTTONVILLE AVE. CENTERLINE AND 1.6'± EAST OF CTH G CENTERLINE.



- SET 3/4" x 18" IRON REBAR, 1.50#/FT
- FOUND 3/4" IRON ROD
- ⊕ FOUND RAILROAD SPIKE
- ⊣ VINYL "T" POST

# ADAMS COUNTY

CORNER NO. 271

## Survey Monument Record

SECTION 12

TYPE OF MONUMENT: Harrison

TOWN 18

STATE PLANE COORDINATES: N \_\_\_\_\_

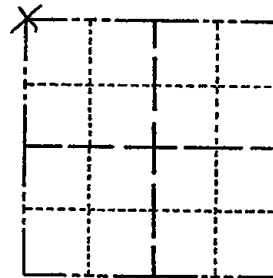
RANGE 2

E \_\_\_\_\_

ELEVATION — M.S.L. DATUM: \_\_\_\_\_

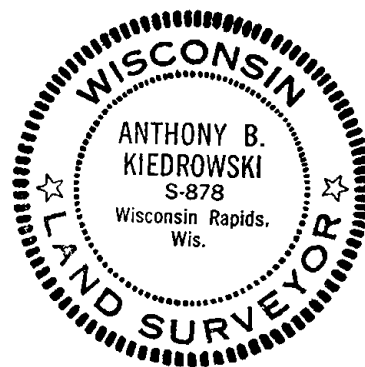
THETA ANGLE: \_\_\_\_\_

FIELD BOOK: 108 PAGE 13



LOCATION  
(Indicated by 'X')

SEAL:



### BASIS FOR MONUMENT LOCATION

(Use reverse side if necessary)

Show info such as: History of corner, with reference to Vol. and pg, dates, surveyor; exact description of monument replaced; if location computed, by taped or EDM traverse; landowner remarks, etc.

Excavated with backhoe.  
 Found 6" x 4" x 8" stone  
 with a piece of spray  
 iron on long side.

|               |          |       |
|---------------|----------|-------|
| CORNER O.K.   | 3-28-77  | GR-SS |
| " "           | 5-17-82  | PK-SS |
| 3 NEW TIES    | 4-6-87   | GR-SS |
| 1 NEW TIE     | 11-26-91 | KZ-SS |
| COR OK        | 2-18-97  | JG-SS |
| 1-GONE, 2-NEW | 1-24-02  | JG-JS |

CERTIFIED CORRECT:

*Anthony B. Kiedrowski*  
 Registered Land Surveyor

DATE: 9-10-73

### TIE SKETCH OK, 4-06-07 - GPR 2 NEW TIES 02-27-12 MS-SS

(Show at least four ties)

