

01 SECTION 18 TOWN 07 RANGE

ADAMS COUNTY

COUNTY CORNER NO: 32
ROMPORTOL ID: 41807010020

PUBLIC LAND SURVEY MONUMENT RECORD

TYPE OF MONUMENT: HARRISON
ADAMS COUNTY COORDINATES, NAD 83 (2007)

N. 251027.219

E. 586021.526

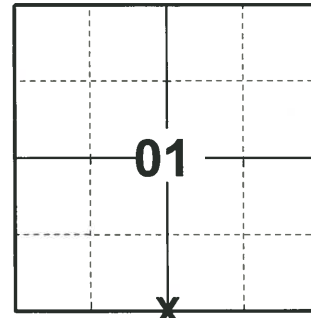
ELEVATION- - - - - DATUM - - - - -

FIELD WORK DATE: 01/03/2020

BASIS FOR MONUMENT LOCATION

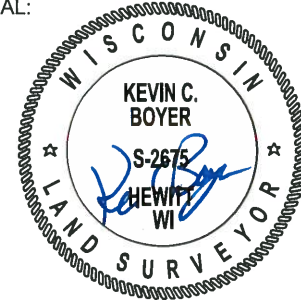
1973 - PLS 878 EXCAVATED WITH BACKHOE, FOUND NOTHING. HARRISON SET ON LINE EQUIDISTANT BETWEEN SECTION CORNERS.

2020 - PLS 2675 A FOUND HARRISON MONUMENT 4"± BELOW THE ROAD SURFACE AND 1 WITNESS. THE MONUMENT AGREES WITH THE WITNESS. ACCEPTED THE HARRISON MONUMENT AS THE CORNER LOCATION. SET 4 NEW TIES AND MEASURED TO THE EXISTING WITNESS.



LOCATION
(INDICATE CORNER BY "X")

SEAL:



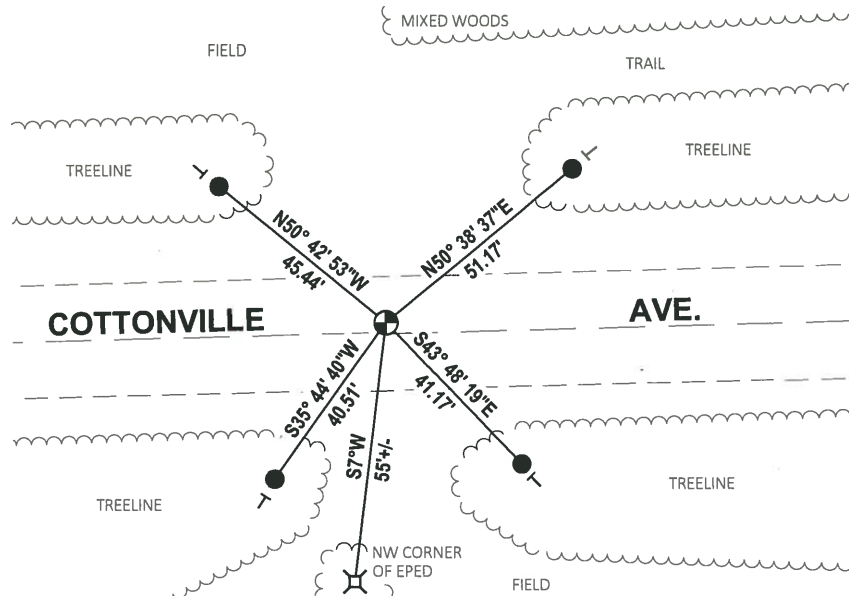
DATA SHOWN HERE ON THIS TIE SHEET IS CORRECT AND COMPLETE TO THE BEST OF MY KNOWLEDGE AND BELIEF.

PROFESSIONAL LAND SURVEYOR

DATE 3/9/2020

TIE SKETCH

NOTE: THE CORNER LANDS 2.3'± NORTH OF COTTONVILLE AVE. CENTERLINE.



- SET 3/4" x 18" IRON REBAR, 1.50#/FT
- ⊕ FOUND HARRISON MONUMENT
- | VINYL "T" POST

ADAMS COUNTY

Survey Monument Record

TYPE OF MONUMENT: Harrison standard

STATE PLANE COORDINATES: N _____

E _____

ELEVATION — M.S.L. DATUM: _____

THETA ANGLE: _____

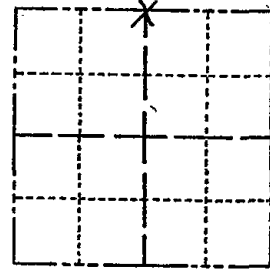
FIELD BOOK: 108 PAGE 41

CORNER NO. 280 32

SECTION 12

TOWN 18

RANGE 7



LOCATION
(Indicated by 'X')

SEAL:



BASIS FOR MONUMENT LOCATION

(Use reverse side if necessary)

Show info such as: History of corner, with reference to Vol. and pg, dates, surveyor; exact description of monument replaced; if location computed, by taped or EDM traverse; landowner remarks, etc.

Excavated with backhoe, found nothing.
Point set on line equidistant between section corners.

CORNER	O.K.	3-28-77	GR-55
"	"	5-17-82	PK-55
"	"	2-23-87	55
"	"	7-6-92	JG-BS
"	"	3-3-97	JG-55
"	"	1-21-02	JG

CERTIFIED CORRECT:

Anthony B. Kiedrowski
Registered Land Surveyor
DATE: 9/18/13

TIE SKETCH OK, 4-11-07-JG
OK 02-28-12 MS

(Show at least four ties)

Ties are to nail and Disc.

