

01
SECTION

18
TOWN

07
RANGE

ADAMS COUNTY

COUNTY CORNER NO: 33

ROMPORTOL ID: 41807010000

PUBLIC LAND SURVEY MONUMENT RECORD

TYPE OF MONUMENT: HARRISON
ADAMS COUNTY COORDINATES, NAD 83 (2007)

N. 251114.889

E. 588668.195

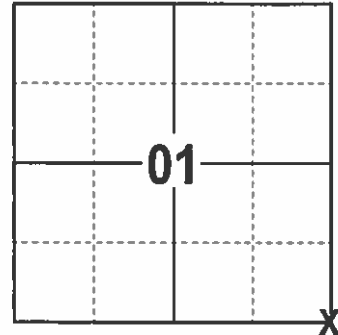
ELEVATION- DATUM

FIELD WORK DATE: 1/9/2017

BASIS FOR MONUMENT LOCATION

1973 - PLS 878 EXCAVATED AND FOUND NOTHING. THE CORNER WAS ESTABLISHED BY ANALYZING A TRAVERSE OF SECTIONS 1, 12 AND 13. POSSESSION LINES AND ORIGINAL NOTES. SET A HARRISON.

2017 - PLS 2994 FOUND EXISTING HARRISON 6 INCHES BELOW THE ROAD SURFACE AND 2 EXISTING WITNESSES. THE HARRISON AGREES WITH THE EXISTING WITNESSES. ACPTED HARRISON AND SET 4 NEW TIES.



LOCATION
(INDICATE CORNER BY "X")

SEAL:



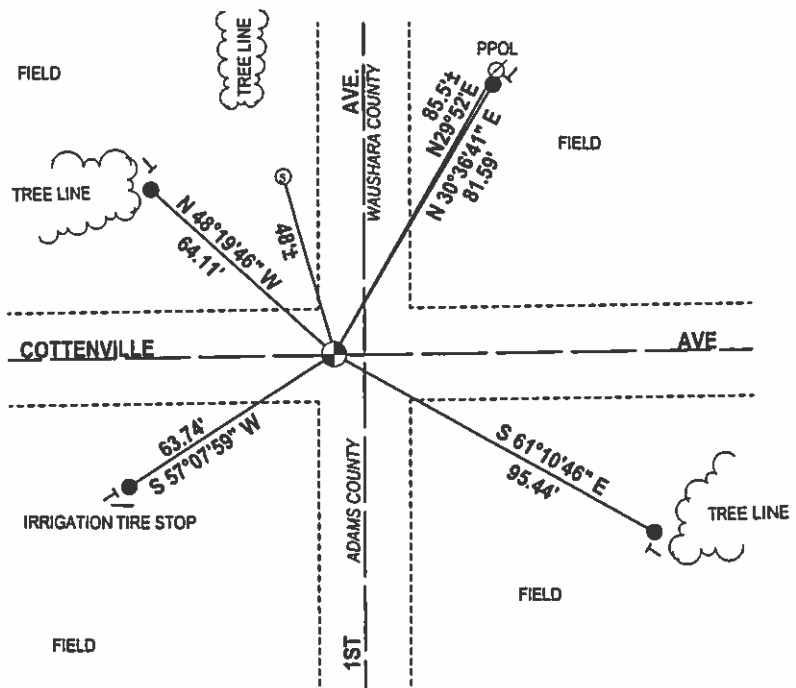
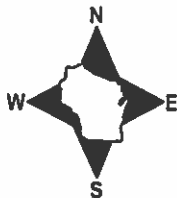
DATA SHOWN HERE ON THIS TIE SHEET IS CORRECT AND COMPLETE TO THE BEST OF MY KNOWLEDGE AND BELIEF.

PROFESSIONAL LAND SURVEYOR

DATE 2/9/17

TIE SKETCH

NOTE: THE CORNER FALLS 8± WEST OF THE CENTERLINE OF 1ST AVE.



- 3/4" X18" IRON REBAR SET, 1.50#/FT
- ⊙ HARRISON FOUND
- VINYL "T" POST

ADAMS COUNTY

Survey Monument Record

TYPE OF MONUMENT: Harrison standard

STATE PLANE COORDINATES: N _____

E _____

ELEVATION — M.S.L. DATUM: _____

THETA ANGLE: _____

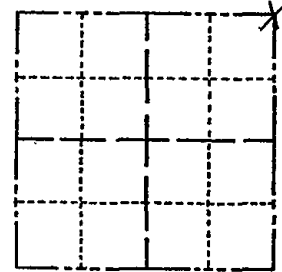
FIELD BOOK: 108 PAGE 41

CORNER NO. 281

SECTION 12

TOWN 18

RANGE 7



LOCATION
(Indicated by 'X')

SEAL:



BASIS FOR MONUMENT LOCATION

(Use reverse side if necessary)

Show info such as: History of corner, with reference to Vol. and pg. dates, surveyor; exact description of monument replaced; if location computed, by taped or EDM traverse; landowner remarks, etc.

Excavated with backhoe, found nothing.
Point established after analyzing a traverse of all of Sections 1, 12, and 13, comparing possession lines and original notes.

CORNER	O.K.	3-28-77	GR-SS
"	"	5-17-82	PK-SS
"	"	2-23-87	SS

2-GONE, 3-NEW, MON. OK 7-6-92, JG-BS
 1-GONE, 1-NEW CORNER OK 1-21-02 JG.
 OK, 4-11-07-JG

CERTIFIED CORRECT:

Anthony B. Kiedrowski
Registered Land Surveyor
DATE: 9/18/73

TIE SKETCH

(Show at least four ties)

Ties are to nail and disc.

