

10 SECTION 18 TOWN 07 RANGE

ADAMS COUNTY

COUNTY CORNER NO: 38
ROMPORTOL ID: 41807102000

PUBLIC LAND SURVEY MONUMENT RECORD

TYPE OF MONUMENT: HARRISON
ADAMS COUNTY COORDINATES, NAD 83 (2007)

N. 248276.715

E. 578037.005

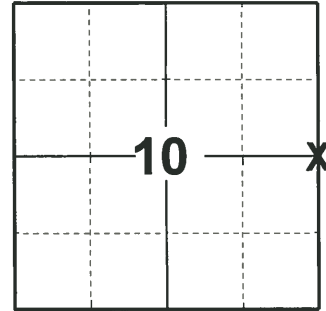
ELEVATION- DATUM

FIELD WORK DATE: 01/15/2020

BASIS FOR MONUMENT LOCATION

1983 - PLS 1444 HARRISON MONUMENT WAS SET EQUIDISTANT AND ON LINE BETWEEN SECTION CORNERS. NO EVIDENCE OF THE ORIGINAL CORNER OR ANY RESURVEY CORNER WAS FOUND.

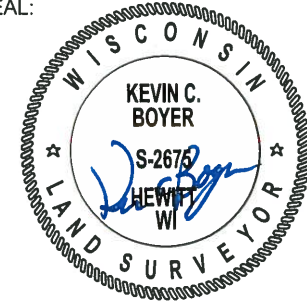
2020 - PLS 2675 FOUND HARRISON 4"± BELOW THE SHOULDER OF THE ROAD AND 2 WITNESSES. THE MONUMENT AGREES WITH BOTH WITNESSES. ACCEPTED THE HARRISON AS THE CORNER LOCATION. SET 4 NEW TIES AND MEASURED TO THE EXISTING WITNESSES.



LOCATION

(INDICATE CORNER BY "X")

SEAL:



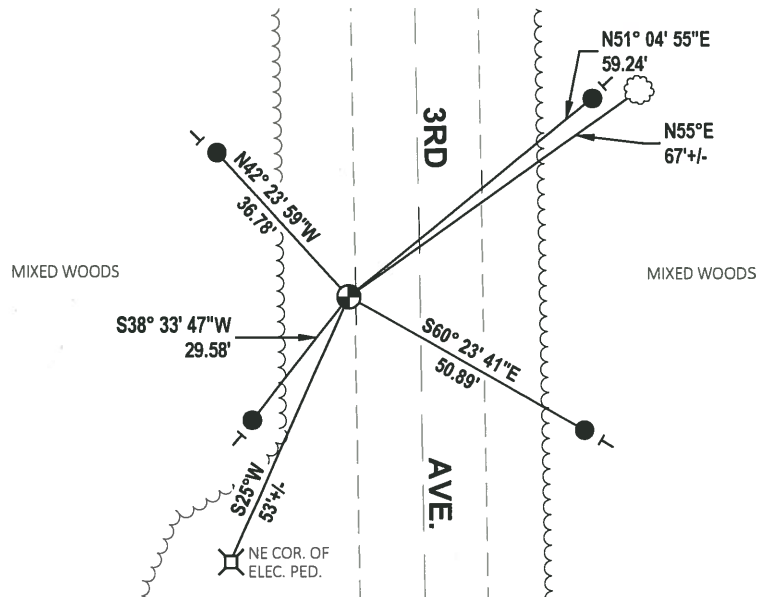
DATA SHOWN HERE ON THIS TIE SHEET IS CORRECT AND COMPLETE TO THE BEST OF MY KNOWLEDGE AND BELIEF.

PROFESSIONAL LAND SURVEYOR

DATE 3/9/2020

TIE SKETCH

NOTE: THE CORNER LANDS 13± WEST OF 3RD AVE. CENTERLINE.

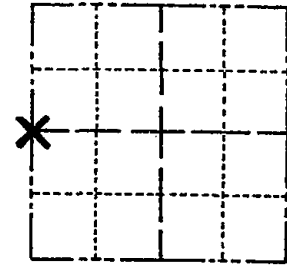


- SET 3/4" x 18" IRON REBAR, 1.50#/FT
- ⊕ FOUND HARRISON MONUMENT
- └ VINYL "T" POST
- ☼ WITNESS TREE

Government Land Corner Certificate

ADAMS County
 TYPE OF MONUMENT: HARRISON
 STATE PLANE COORDINATES: N _____
 E _____
 ELEVATION — M.S.L. DATUM: _____
 THETA ANGLE: _____
 FIELD BOOK: 92 PAGE 145
 DRAWN BY: LANCE HABECK

CORNER NO. 38
 SECTION 11
 TOWN 18
 RANGE 7



LOCATION
 (Indicated by 'X')

BASIS FOR MONUMENT LOCATION

Show info such as: History of corner, with reference to Vol. and pg., dates, surveyor; exact description of monument replaced; if location computed, by taped or EDM traverse; landowner remarks, etc. (Use reverse side if necessary)

This corner was set equidistant and on line between section corners. No evidence of the original corner or any resurvey corner was found.

OK, 4-06-07- GPR

SEAL:



DATA SHOWN HERE ON
 CERTIFIED CORRECT:

Lance J. Habeck
 Registered Land Surveyor

DATE: 1/13/83

TIE SKETCH

Show at least four ties, also fence lines, roads, topo, size and type of witness trees and if off road - best way to arrive at corner.

