

11
SECTION

18
TOWN

07
RANGE

ADAMS COUNTY

COUNTY CORNER NO: 39

ROMPORTOL ID: 41807112000

PUBLIC LAND SURVEY MONUMENT RECORD

TYPE OF MONUMENT: HARRISON
ADAMS COUNTY COORDINATES, NAD 83 (2007)

N. 248316.708

E. 583372.820

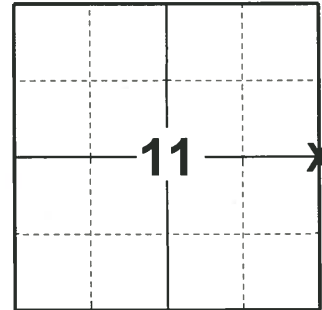
ELEVATION- --- DATUM ---

FIELD WORK DATE: 02/04/2020

BASIS FOR MONUMENT LOCATION

1973 - PLS 878 SET HARRISON MONUMENT.

2020 - PLS 2675 FOUND HARRISON MONUMENT 12"± BELOW THE ROAD SURFACE, 1 TIE, AND 2 WITNESSES. THE MONUMENT AGREES WITH THE TIE AND WITNESSES. ACCEPTED THE HARRISON MONUMENT AS THE CORNER LOCATION. SET 4 NEW TIES AND MEASURED TO THE EXISTING TIE AND WITNESSES.



LOCATION

(INDICATE CORNER BY "X")

SEAL:



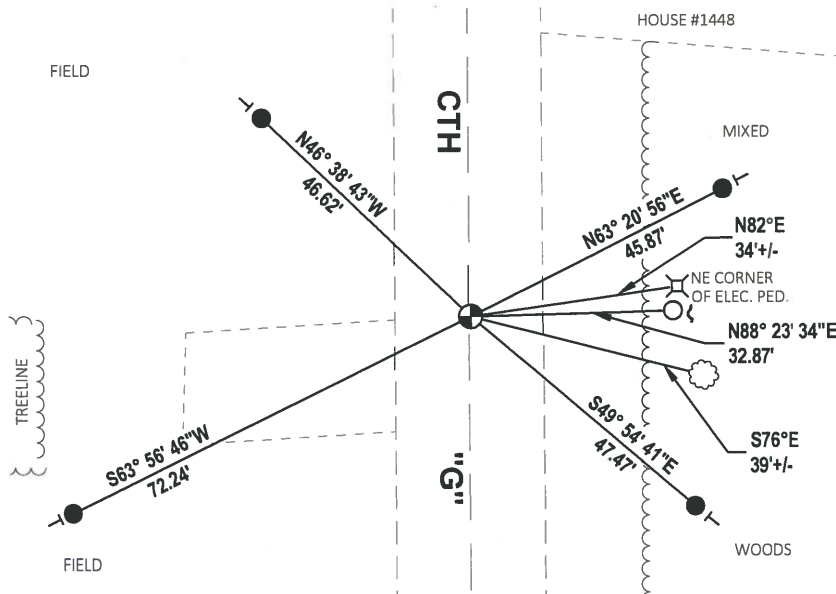
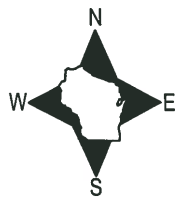
DATA SHOWN HERE ON THIS TIE SHEET IS CORRECT AND COMPLETE TO THE BEST OF MY KNOWLEDGE AND BELIEF.

PROFESSIONAL LAND SURVEYOR

DATE 3/9/2020

- TIE SKETCH -

NOTE: THE CORNER LANDS 0.4'± EAST OF CENTERLINE OF CTH "G".



- SET 3/4" x 18" IRON REBAR, 1.50#/FT
- FOUND 3/4" IRON ROD
- ⊕ FOUND HARRISON MONUMENT
- ~ STEEL FENCE POST
- VINYL "T" POST
- ☼ WITNESS TREE

ADAMS COUNTY

Survey Monument Record

TYPE OF MONUMENT: Landowner

STATE PLANE COORDINATES: N _____

E _____

ELEVATION — M.S.L. DATUM: _____

THETA ANGLE: _____

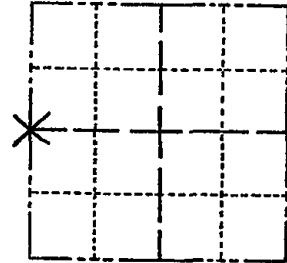
FIELD BOOK: 108 PAGE 13

CORNER NO. 270

SECTION 12

TOWN 18

RANGE 7



LOCATION (Indicated by 'X')

SEAL:

BASIS FOR MONUMENT LOCATION

(Use reverse side if necessary)

Show info such as: History of corner, with reference to Vol. and pg, dates, surveyor; exact description of monument replaced; if location computed, by taped or EDM traverse; landowner remarks, etc.



CORNER	O.K.	3-28-77	GR-SS
"	"	5-17-82	PK-SS
"	"	4-6-87	GR-SS
"	"	11-26-91	KZ-SS
"	"	2-18-97	JG-SS

CERTIFIED CORRECT:

Anthony B. Kiedrowski
Registered Land Surveyor

DATE: 9-10-73

TIE SKETCH 1-GONE, 2-NEW, 1-24-02 JG-JS

(Show at least four ties) 2 NEW TIES 02-27-12 MS-SS

