

PUBLIC LAND SURVEY MONUMENT RECORD

TYPE OF MONUMENT: HARRISON
 ADAMS COUNTY COORDINATES, NAD 83 (2007)

N. 245669.076

E. 562200.934

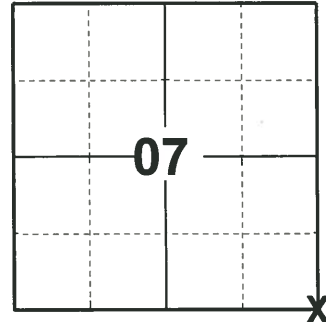
ELEVATION- - - - - DATUM - - - - -

FIELD WORK DATE: 01/07/2020

BASIS FOR MONUMENT LOCATION

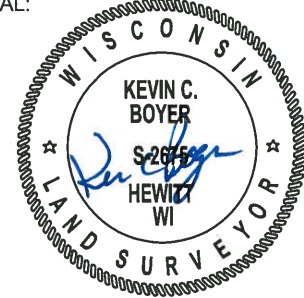
1983 - PLS 1551 PROBED AREA FOR STAKE AND BEARING TREES, NOTHING WAS FOUND. HARRISON MONUMENT WAS RESET DOUBLE PROPORTIONALLY USING THE NE OF 7 AND SE OF 18, THE S1/4 OF 7 AND THE S1/4 OF 9, ALL OF WHICH WERE RESET FROM ORIGINAL OR SUBSEQUENT BEARING TREES. CORNER POSITION AGREES CLOSELY WITH ORIGINAL SECTION MEASUREMENTS AND WITH THOSE IN ADAMS COUNTY FIELD NOTES VOL. 3, PG. 6, AND VOL. 8, PG. 18 WHICH RE-MEASURED THE WEST LINE OF SECTION 17. THE EXISTING MONUMENT AT THE W1/4 OF 17 WAS NOT USED IN THE PRORATION AS IT IS LOCATED 44.8' FURTHER NORTH THAN ORIGINAL AND SUBSEQUENT MEASUREMENTS WOULD PUT IT. PRORATION USING THIS CORNER WOULD ALSO PLACE THE SE OF 7 WHERE THE ORIGINAL TAMARACK TIES WOULD FALL ON HIGH GROUND.

2020 - PLS 2675 FOUND HARRISON FLUSH WITH THE GROUND AND 3 WITNESS TREES. THE MONUMENT AGREES WITH ALL 3 WITNESS TREES. ACCEPTED THE HARRISON AS THE CORNER LOCATION. SET 4 NEW TIES AND MEASURED TO THE EXISTING WITNESS TREES.



LOCATION
 (INDICATE CORNER BY "X")

SEAL:



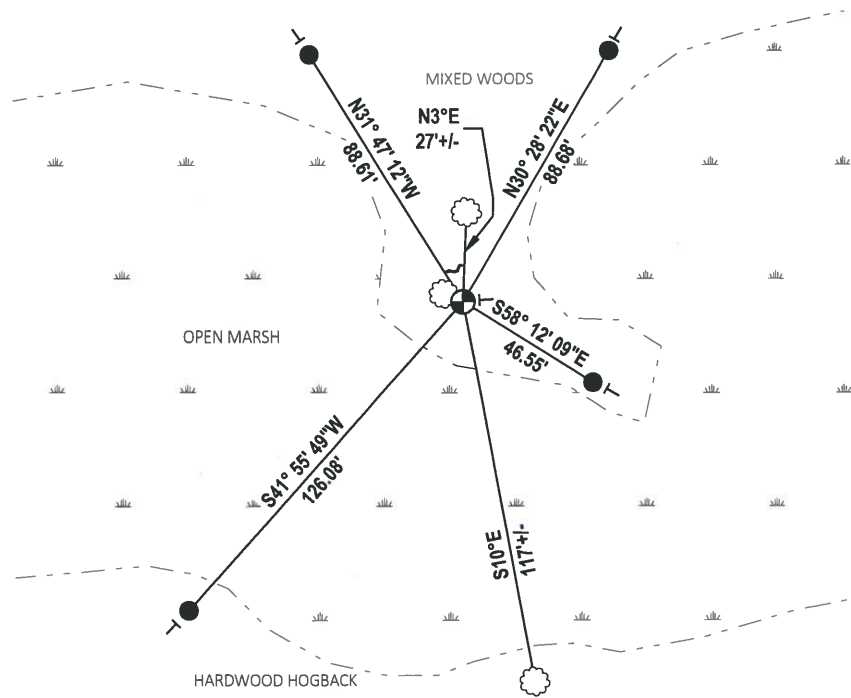
DATA SHOWN HERE ON THIS TIE SHEET IS CORRECT AND COMPLETE TO THE BEST OF MY KNOWLEDGE AND BELIEF.

PROFESSIONAL LAND SURVEYOR

DATE 3/9/2020

TIE SKETCH

NOTE: A WITNESS TREE LANDS N67°W, 6'± FROM THE MONUMENT.



- SET 3/4" x 18" IRON REBAR, 1.50#/FT
- ⊕ FOUND HARRISON MONUMENT
- ~ STEEL FENCE POST
- ┆ VINYL "T" POST
- ⊗ WITNESS TREE

U.S. PUBLIC LAND SURVEY MONUMENT RECORD

ADAMS COUNTY

TYPE OF MONUMENT: Standard Harrison

STATE PLANE COORDINATES: N _____

E _____

ELEVATION — M.S.L. DATUM: _____

THETA ANGLE: _____

FIELD BOOK: Adams County PAGE 53

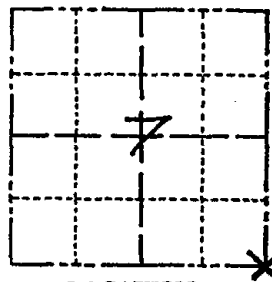
DRAWN BY: D. Riesop

CORNER NO. 43

SECTION 7

TOWN 18N

RANGE 7E



LOCATION
(Indicated by 'X')



BASIS FOR MONUMENT LOCATION

Show info such as: History of corner, with reference to Vol. and pg., dates, surveyor; exact description of monument replaced; if location computed, by taped or EDM traverse; landowner remarks, etc. (Use reverse side if necessary)
(in conformance with Section A-E 502 of the Wisconsin Administrative Code)

SEAL:



Probed area for stake and bearing trees, nothing was found. Corner was reset double proportionally using the NE of 7 and SE of 18, the S 1/4 of 7 and the S 1/4 of 9, all of which were reset from original or subsequent bearing trees.

Corner position agrees closely with original section measurements and with those in Adams County field notes Vol. 3 Page 6, and Vol. 8, Page 18 which re-measured the West line of Section 17.

The existing monument at the W 1/4 of 17 was not used in this proration as it is located 44.8' further North than original and subsequent measurements would put it. Proration using this corner would also place the SE of 7 where the original Tamarack ties would fall on high ground.

DATA SHOWN HERE ON
CERTIFIED CORRECT:

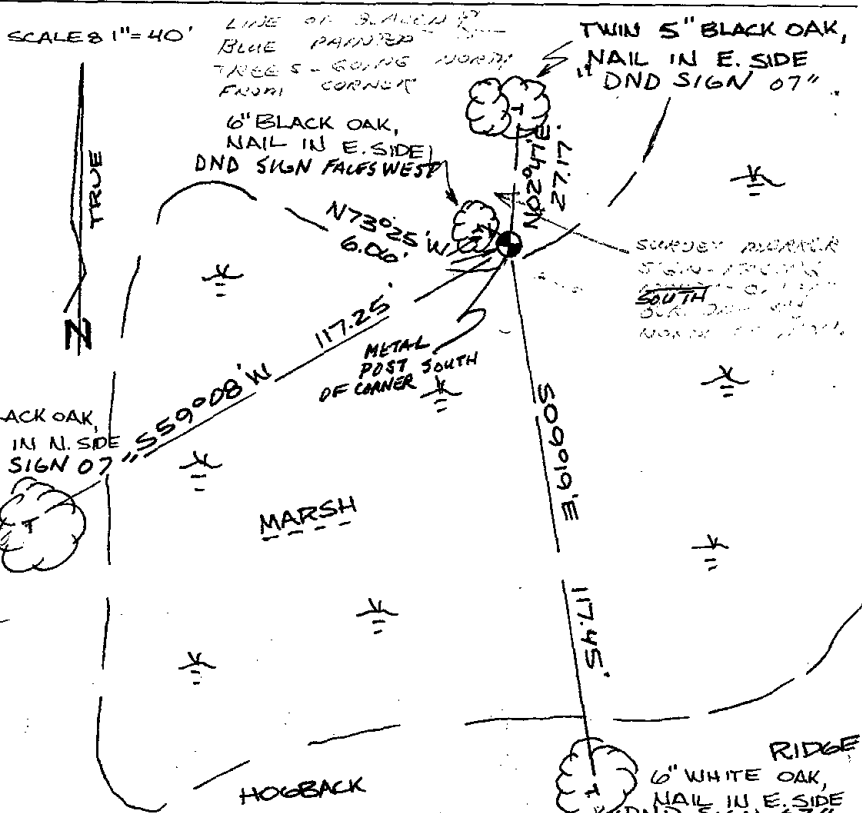
David C. Riesop
Registered Land Surveyor

DATE: 6/25/83

TIE SKETCH

Show at least four ties, also fence lines, roads, topo, size and type of witness trees' and if off road - best way to arrive at corner.

filled for record this 20th day of July 1983
per 59.60 Wisconsin Statutes
D. Riesop
ADAMS COUNTY SURVEYOR



MAINTENANCE RECORD

Date	Init.	Remarks
10-1-87	SS	O.K.
6-10-92	JG	OK
1-5-98	SS	OK
1-24-02	JG	OK
10-18-07	SS	OK
02-24-12	MS-SS	OK

1957

1958

1959

1960

1961

1962

1963