

08
SECTION

18
TOWN

07
RANGE

ADAMS COUNTY

COUNTY CORNER NO: 44

ROMPORTOL ID: 41807080020

PUBLIC LAND SURVEY MONUMENT RECORD

TYPE OF MONUMENT: 2-3/8" O.D. IRON PIPE

ADAMS COUNTY COORDINATES, NAD 83 (2007)

N. 245636.793

E. 564836.478

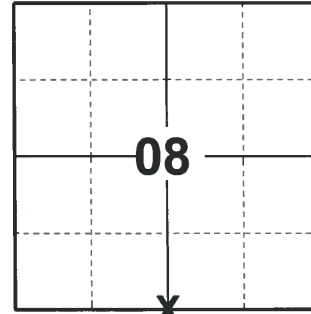
ELEVATION- DATUM

FIELD WORK DATE: 01/08/2020

BASIS FOR MONUMENT LOCATION

1983 - PLS 1551 PROBED AREA FOR STAKE AND BEARING TREES, NOTHING WAS FOUND. SET CORNER PROPORTIONALLY ON A STRAIGHT LINE BETWEEN THE SW CORNER OF 8 AND A COMPUTED LOCATION FOR THE SE CORNER OF 8. THE EXISTING MONUMENT AT THE SE CORNER WAS NOT USED IN PRORATION AS IT IS 102' WEST OF A PRORATED POSITION BASED ON CORNERS RE-ESTABLISHED FROM ORIGINAL TIES.

2020 - PLS 2675 FOUND 2-3/8" O.D. IRON PIPE 24± ABOVE THE GROUND AND 2 WITNESS TREES. THE MONUMENT AGREES WITH BOTH WITNESS TREES. ACCEPTED THE 2-3/8" O.D. IRON PIPE AS THE CORNER LOCATION. SET 4 NEW TIES AND MEASURED TO THE EXISTING WITNESS TREES.



LOCATION
(INDICATE CORNER BY "X")

SEAL:

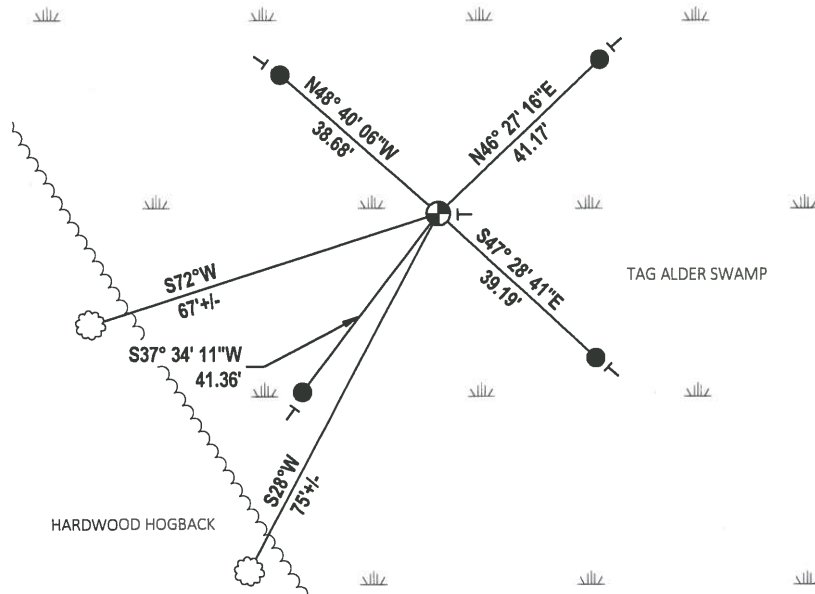
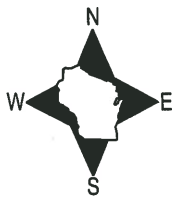


DATA SHOWN HERE ON THIS TIE SHEET IS CORRECT AND COMPLETE TO THE BEST OF MY KNOWLEDGE AND BELIEF.

PROFESSIONAL LAND SURVEYOR

DATE 3/9/2020

- TIE SKETCH



- SET 3/4" x 18" IRON REBAR, 1.50#/FT
- ⊕ FOUND 2-3/8" O.D. IRON PIPE
- ┊ VINYL "T" POST
- ☼ WITNESS TREE

U.S. PUBLIC LAND SURVEY MONUMENT RECORD

ADAMS COUNTY

TYPE OF MONUMENT: 2" I.D. x 60" galvanized pipe

STATE PLANE COORDINATES: N _____
E _____

ELEVATION — M.S.L. DATUM: _____

THETA ANGLE: _____

FIELD BOOK: Adams County PAGE 52

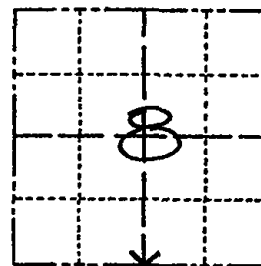
DRAWN BY: D. Riesop

CORNER NO. 44

SECTION 8

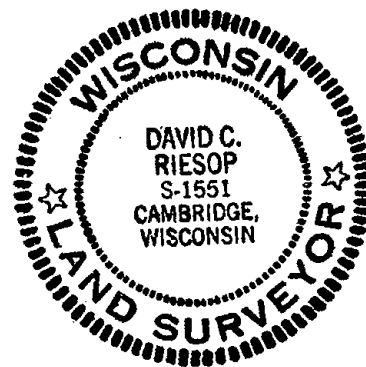
TOWN 18N

RANGE 7E



LOCATION
(Indicated by 'X')

SEAL:



DATA SHOWN HERE ON
CERTIFIED CORRECT:

David C. Riesop
Registered Land Surveyor

DATE: 6/25/83

BASIS FOR MONUMENT LOCATION

Show info such as: History of corner, with reference to Vol. and pg., dates, surveyor; exact description of monument replaced; if location computed, by taped or EDM traverse; landowner remarks, etc. (Use reverse side if necessary) (in conformance with Section A-E 502 of the Wisconsin Administrative Code)

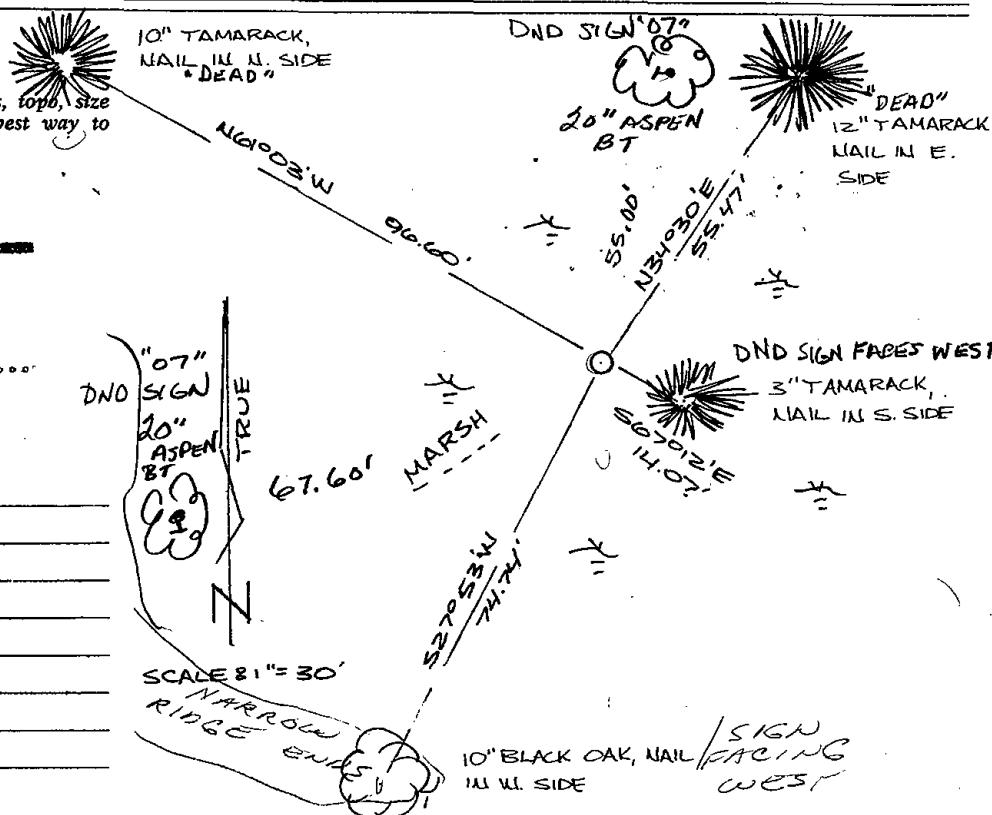
Probed area for stake and bearing trees, nothing was found.

Set corner proportionally on a straight line between the SW corner of 8 and a computed location for the SE corner of 8.

The existing monument at the SE corner was not used in proration as it is 102' West of a prorated position based on corners re-established from original ties.

TIE SKETCH

Show at least four ties, also fence lines, roads, topo, size and type of witness trees' and if off road - best way to arrive at corner.

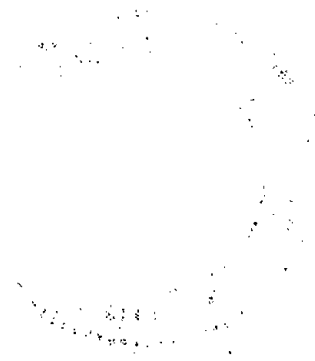


filed for record this 20th day of July 1983 per 59.60 Wisconsin Statutes.
D. Riesop
ADAMS COUNTY SURVEYOR

MAINTENANCE RECORD

Date	Init.	Remarks
11-4-87	SS	O.K.
6-10-92	SG, BS	OK
1-5-98	SS	OK
1-24-02	JG	2. NEW TIES
10-9-07	JG	OK
02-28-12	MS	OK

SCALE 8" = 30'
NARROW RIDGE ENDS
10" BLACK OAK, NAIL IN W. SIDE / SIGN FACING WEST



Faint, illegible text, possibly bleed-through from the reverse side of the page. The text is arranged in several lines and is too light to transcribe accurately.