

PUBLIC LAND SURVEY MONUMENT RECORD

TYPE OF MONUMENT: HARRISON
 ADAMS COUNTY COORDINATES, NAD 83 (2007)

N. 245576.717

E. 570136.563

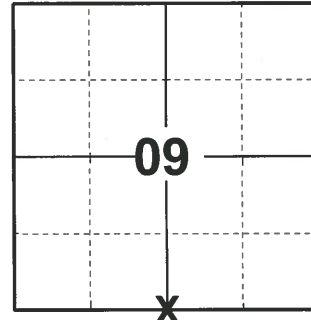
ELEVATION- - - - DATUM - - - -

FIELD WORK DATE: 01/08/2020

BASIS FOR MONUMENT LOCATION

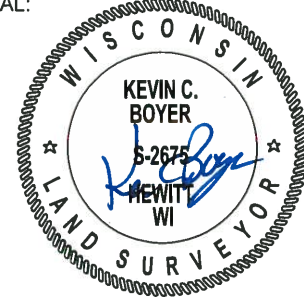
1983 - PLS 1551 FOUND HUMMOCK OF ORIGINAL SW BT, IDENTIFIED AS TAMARACK BY U.S. FOREST LAB. ALSO FOUND REMAINS OF TREE AT ORIGINAL TIE DISTANCE TO NORTHEAST, BUT TOO ROTTED TO IDENTIFY. EXCAVATED CORNER AREA WITH SHOVEL, BUT NO STAKE WAS FOUND. RE-MONUMENTED WITH HARRISON MONUMENT FROM ORIGINAL TIE AND BEARING TO SOUTHWEST. LOCATION USED FOR THIS CORNER FITS DOUBLED DISTANCE THROUGH STONE FOUND AT 40 CORNER TO EAST AND CORNER ESTABLISHED AT THE NE CORNER OF SECTION 16, AND IS WITHIN 7 FEET OF THE ORIGINAL SURVEY DISTANCE.

2020 - PLS 2675 FOUND HARRISON MONUMENT 4"± BELOW GROUND SURFACE AND 2 WITNESS TREES. THE MONUMENT AGREES WITH BOTH WITNESS TREES. ACCEPTED THE HARRISON MONUMENT AS THE CORNER LOCATION. SET 4 NEW TIES AND MEASURED TO THE EXISTING WITNESS TREES.



LOCATION
 (INDICATE CORNER BY "X")

SEAL:

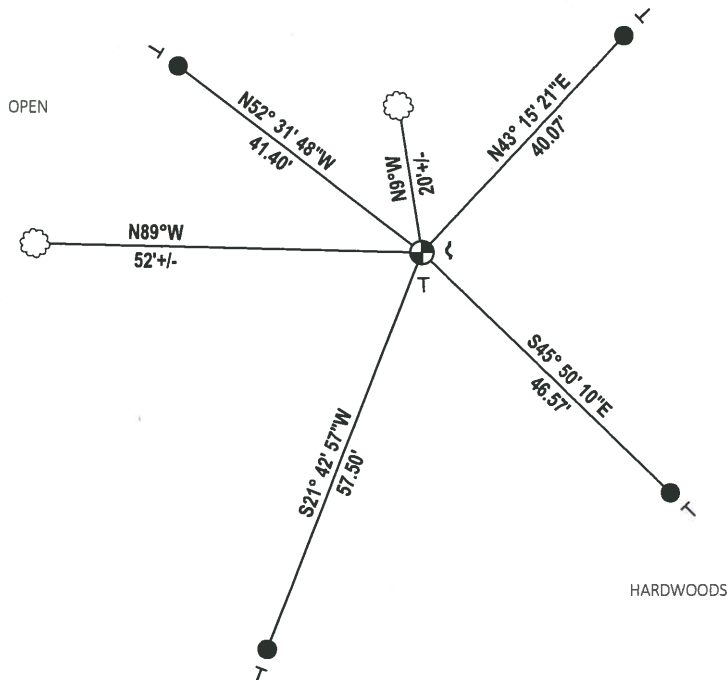
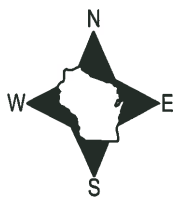


DATA SHOWN HERE ON THIS TIE SHEET IS CORRECT AND COMPLETE TO THE BEST OF MY KNOWLEDGE AND BELIEF.

PROFESSIONAL LAND SURVEYOR

DATE 3/9/2020

- TIE SKETCH



- SET 3/4" x 18" IRON REBAR, 1.50#/FT
- ⊕ FOUND HARRISON MONUMENT
- ┌ STEEL FENCE POST
- └ VINYL "T" POST
- ☁ WITNESS TREE

U.S. PUBLIC LAND SURVEY MONUMENT RECORD

ADAMS COUNTY

TYPE OF MONUMENT: Standard Harrison

STATE PLANE COORDINATES: N _____
E _____

ELEVATION — M.S.L. DATUM: _____

THETA ANGLE: _____

FIELD BOOK: Adams County PAGE 54

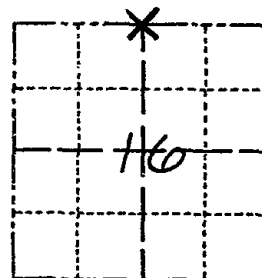
DRAWN BY: D. Riesop

CORNER NO. 46

SECTION 16

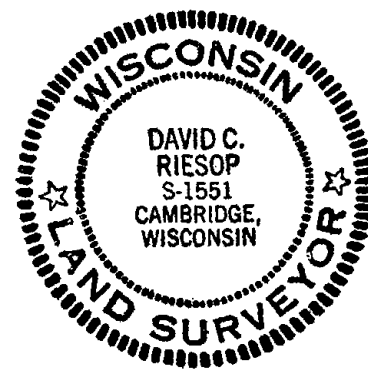
TOWN 18N

RANGE 7E



LOCATION
(Indicated by 'X')

SEAL:



DATA SHOWN HERE ON
CERTIFIED CORRECT:

David C. Riesop
Registered Land Surveyor

DATE: 6/29/83

BASIS FOR MONUMENT LOCATION

Show info such as: History of corner, with reference to Vol. and pg., dates, surveyor; exact description of monument replaced; if location computed, by taped or EDM traverse; landowner remarks, etc. (Use reverse side if necessary)
(in conformance with Section A-E 502 of the Wisconsin Administrative Code)

Found hummock of original SW BT, identified as Tamarack by U.S. Forest Lab. Also found remains of tree at original tie distance to Northeast, but too rotted to identify.

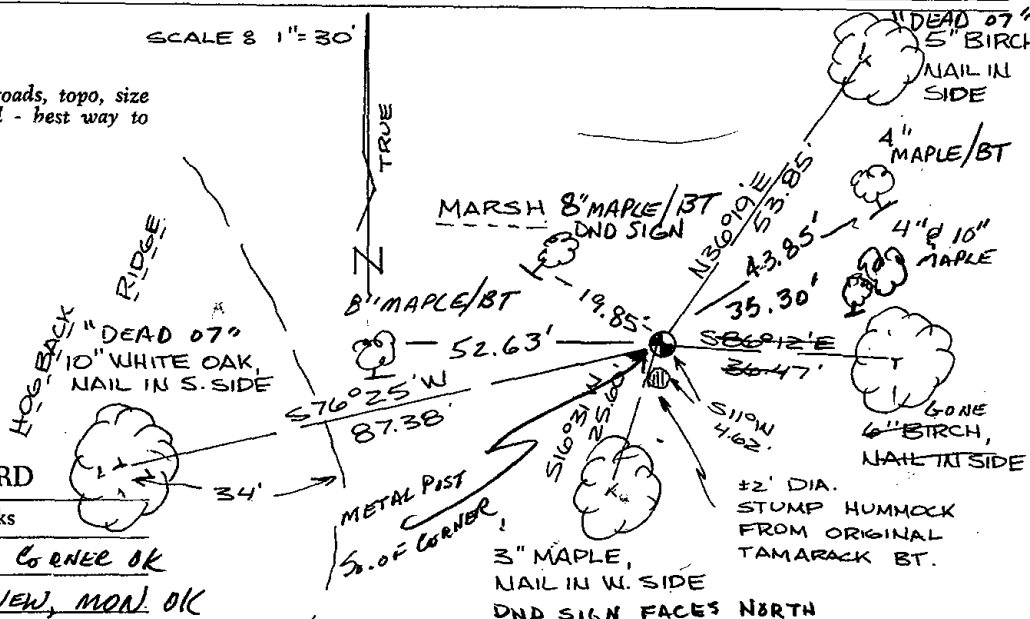
Excavated corner area with shovel, but no stake was found. Re-monumented corner from original tie and bearing to Southwest.

Location used for this corner fits doubled distance through stone found at 40 corner to East and corner established at the NE corner of Section 16, and is within 7 feet of the original survey distance.

TIE SKETCH

Show at least four ties, also fence lines, roads, topo, size and type of witness trees and if off road - best way to arrive at corner.

SCALE 8 1" = 30'



MAINTENANCE RECORD

Date	Init.	Remarks
1-24-02	JG-JS	1-GONE, 1-NEW, CORNER OK
10-9-07	JG	2-DEAD, 2-NEW, MON. OK

For record this...
July 19...
ADAMS COUNTY SURVEYOR

1950

The first part of the report deals with the general situation in the country. It is noted that the economy is showing signs of recovery, but that the government's policies are still being tested.

The second part of the report discusses the progress of the various departments. It is noted that the Ministry of Finance has made significant progress in reducing the budget deficit.

The third part of the report deals with the social and cultural aspects of the country. It is noted that the government has made considerable progress in improving the standard of living of the people.