

PUBLIC LAND SURVEY MONUMENT RECORD

TYPE OF MONUMENT: HARRISON (BROKEN-TOP)
 ADAMS COUNTY COORDINATES, NAD 83 (2007)

N. 245609.088

E. 578037.590

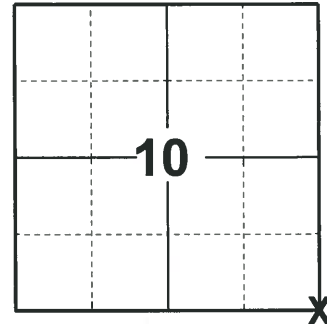
ELEVATION- - - - DATUM - - - -

FIELD WORK DATE: 01/17/2020

BASIS FOR MONUMENT LOCATION

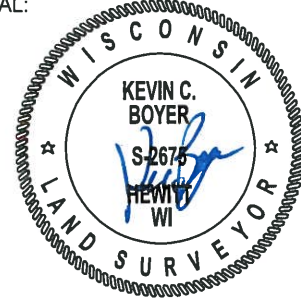
1978 - PLS 878 EXCAVATED WITH BACKHOE IN DEEP FILL AREA. FOUND NOTHING. HARRISON SET BY EXTENDING A LINE FROM THE STONE FOUND AT THE SOUTHEAST CORNER THROUGH A STONE FOUND AT THE EAST QUARTER CORNER AS PER ADJUSTED ACCORDING TO M.C. SMITH NOTES.

2020 - PLS 2675 FOUND HARRISON (BROKEN-TOP) 6"± BELOW THE ROAD SURFACE AND 1 TIE. THE MONUMENT AGREES WITH THE TIE. ACCEPTED THE HARRISON (BROKEN-TOP) AS THE CORNER LOCATION. SET 4 NEW TIES AND MEASURED TO THE EXISTING TIE.



LOCATION
 (INDICATE CORNER BY "X")

SEAL:



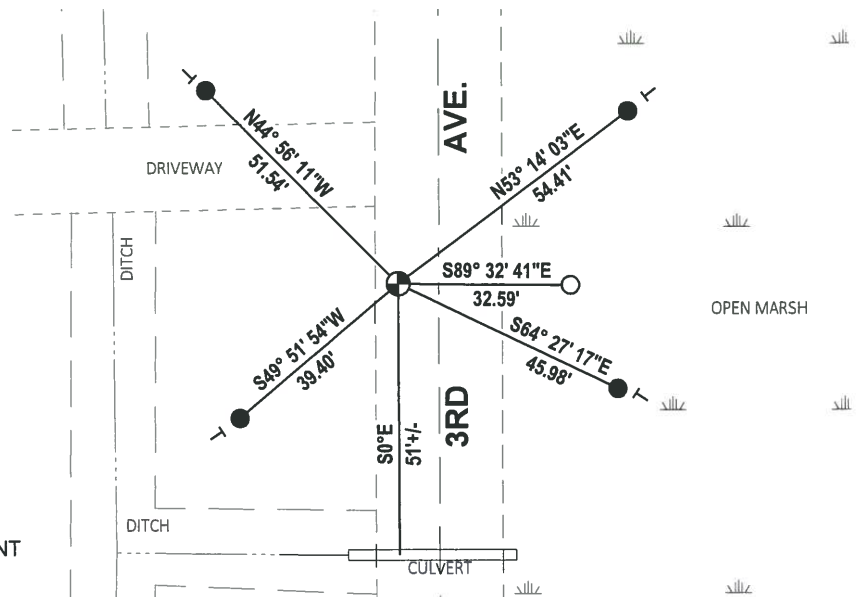
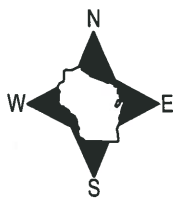
DATA SHOWN HERE ON THIS TIE SHEET IS CORRECT AND COMPLETE TO THE BEST OF MY KNOWLEDGE AND BELIEF.

PROFESSIONAL LAND SURVEYOR

DATE 3/9/2020

TIE SKETCH

NOTE: THE CORNER LANDS 7.5'± WEST OF 3RD AVE CENTERLINE.

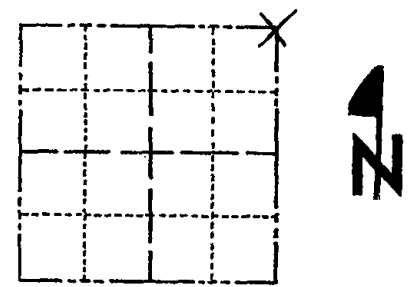


- SET 3/4" x 18" IRON REBAR, 1.50#/FT
- FOUND 3/4" IRON ROD
- ⊕ FOUND HARRISON (BROKEN-TOP) MONUMENT
- VINYL "T" POST

Government Land Corner Certificate

ADAMS County
 TYPE OF MONUMENT: Harrison Monument
 STATE PLANE COORDINATES: N _____
 E _____
 ELEVATION — M.S.L. DATUM: _____
 THETA ANGLE: _____
 FIELD BOOK: 57 (101) PAGE 29 (112)
 DRAWN BY: Roger Nuber

CORNER NO. 49
 SECTION 15
 TOWN 18
 RANGE 7



LOCATION
 (Indicated by 'X')

BASIS FOR MONUMENT LOCATION

Show info such as: History of corner, with reference to Vol. and pg., dates, surveyor; exact description of monument replaced; if location computed, by taped or EDM traverse; landowner remarks, etc. (Use reverse side if necessary)

Excavated with backhoe in deep fill area. Found nothing. Point set by extending a line from the stone found at the southeast corner through a stone found at the east quarter corner and a distance north of the quarter corner as per adjusted according to M.C. Smith notes.

SEAL:



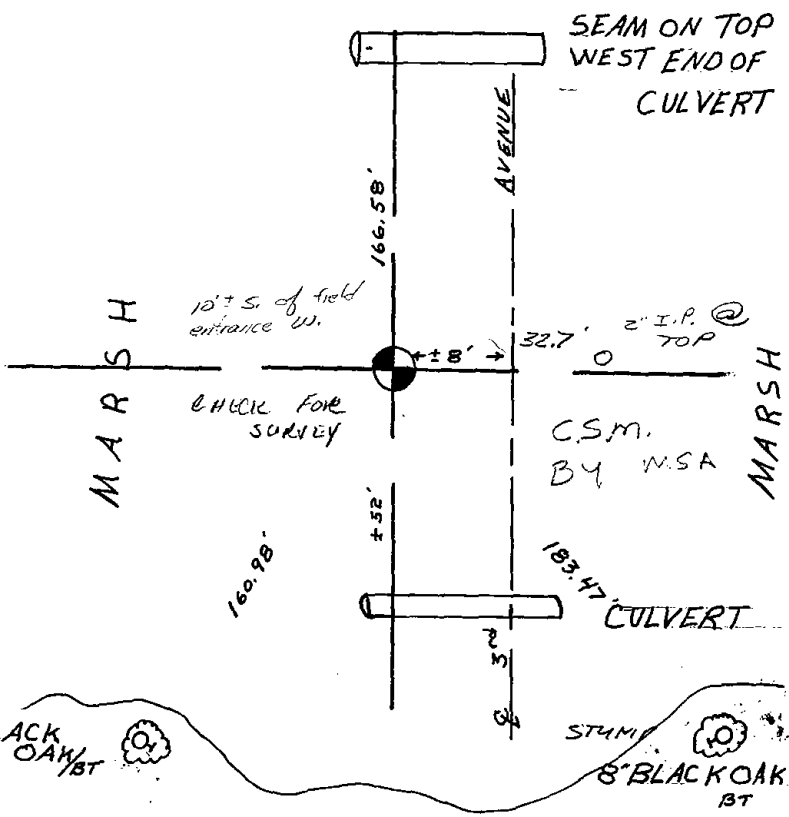
DATA SHOWN HERE ON
 CERTIFIED CORRECT:

Anthony B. Kiedrowski
 Registered Land Surveyor

DATE: 1/13/78

TIE SKETCH

Show at least four ties, also fence lines, roads, topo, size and type of witness trees' and if off road - best way to arrive at corner.



MAINTENANCE RECORD

Date	Init.	Remarks
5-17-82	PK-SS	TOP BROKEN BOTTOM IN PLACE
2-23-87	SS	" "
11-26-91	KZ-SS	" "
1-18-02	GR-SS	OK
4-06-07	GPR	OK

30" BLACK OAK BT

STUMP
 8" BLACK OAK BT