

12
SECTION

18
TOWN

07
RANGE

ADAMS COUNTY

COUNTY CORNER NO: 53

ROMPORTOL ID: 41807120000

PUBLIC LAND SURVEY MONUMENT RECORD

TYPE OF MONUMENT: HARRISON (BROKEN TOP)
ADAMS COUNTY COORDINATES, NAD 83 (2007)

N. 245810.132

E. 588697.411

ELEVATION- DATUM

FIELD WORK DATE: 1/4/2017

BASIS FOR MONUMENT LOCATION

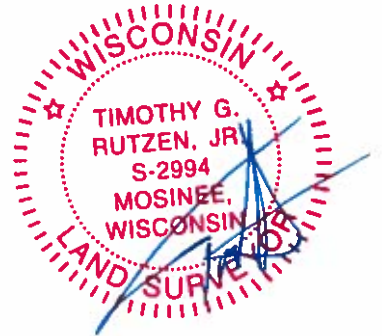
1973 - PLS 878 EXCAVATED AREA AROUND THE FENCE CORNER WITH A BACKHOE AND FOUND NOTHING. SET A HARRISON AFTER ANALYZING A TRAVERSE OF THE SECTION.

2017 - PLS 2994 FOUND HARRISON WITH A BROKEN TOP 12 INCHES BELOW THE SURFACE NEAR THE END OF THE FENCE. NO WITNESS TREES WERE FOUND FROM 1973. ACCEPTED THE HARRISON AND SET 4 NEW TIES.



LOCATION
(INDICATE CORNER BY "X")

SEAL:

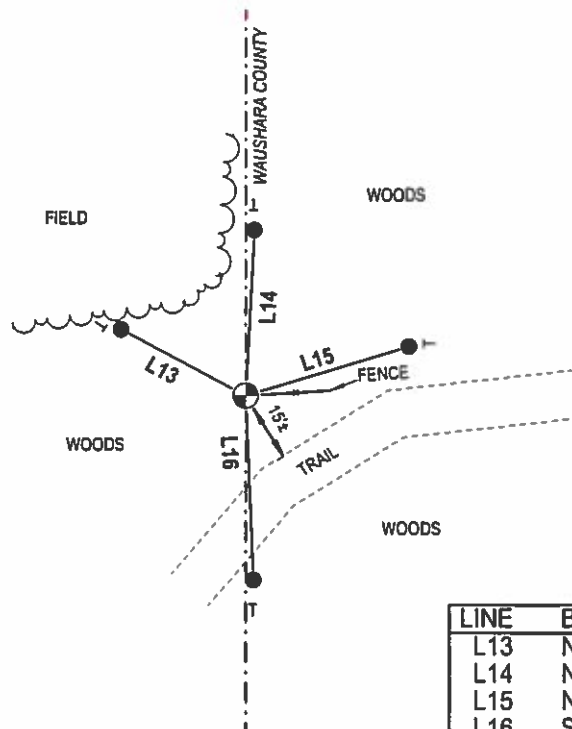
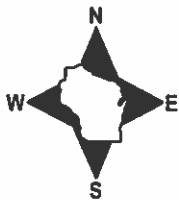


DATA SHOWN HERE ON THIS TIE SHEET IS CORRECT AND COMPLETE TO THE BEST OF MY KNOWLEDGE AND BELIEF.

PROFESSIONAL LAND SURVEYOR

DATE 2/9/17

TIE SKETCH



LINE	BEARING	DISTANCE
L13	N 62°13'41" W	29.32'
L14	N 02°58'02" E	34.50'
L15	N 73°15'29" E	35.74'
L16	S 02°19'57" E	38.26'

- 3/4" X18" IRON REBAR SET, 1.50#/FT
- ⊕ HARRISON FOUND
- VINYL "T" POST

ADAMS COUNTY

Survey Monument Record

TYPE OF MONUMENT: Harrison standard

STATE PLANE COORDINATES: N _____

E _____

ELEVATION — M.S.L. DATUM: _____

THETA ANGLE: _____

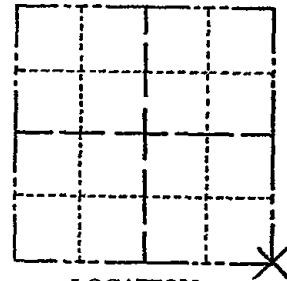
FIELD BOOK: 108 PAGE 42

CORNER NO. 282

SECTION 12

TOWN 18

RANGE 7



LOCATION
(Indicated by 'X')

SEAL:

BASIS FOR MONUMENT LOCATION

(Use reverse side if necessary)

Show info such as: History of corner, with reference to Vol. and pg. dates, surveyor; exact description of monument replaced; if location computed, by taped or EDM traverse; landowner remarks, etc.

Excavated area around fence corner with backhoe, found nothing.
Point set by analyzing a traverse of all of the section, taking into account the stone found 1/2 mile north of here.



CORNER O.K.	5-17-82	PK-SS	
"	"	3-9-87	62-SS
"	"	11-26-91	K2-SS
"	"	1-21-02	SG
"	"	4-11-04	SG
OK	2-28-12	MS	

CERTIFIED CORRECT:

Anthony B. Kiedrowski
Registered Land Surveyor
9/18/13

DATE: _____

TIE SKETCH

(Show at least four ties)

Ties are to nail and disc.

