

PUBLIC LAND SURVEY MONUMENT RECORD

TYPE OF MONUMENT: 3/4" IRON ROD
 ADAMS COUNTY COORDINATES, NAD 83 (2007)

N. 240329.984

E. 564909.323

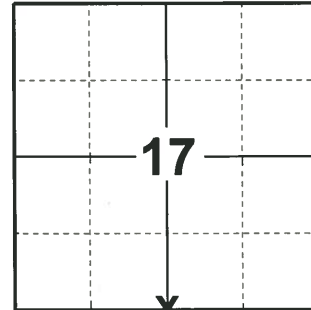
ELEVATION- _____ DATUM _____

FIELD WORK DATE: 01/10/2020

BASIS FOR MONUMENT LOCATION

1981 - PLS 1478 SET CORNER EQUIDISTANT AND ON LINE BETWEEN ADJACENT SECTION CORNERS. A THOROUGH SEARCH REVEALED NO PREVIOUS MONUMENTATION OR BEARINGS. THIS POINT FITS THE TOPOGRAPHY INDICATED BY ORIGINAL AND SUBSEQUENT BEARINGS (AS RECORDED IN LOOSE NOTES FILED IN ADAMS COUNTY SURVEYORS OFFICE.)

2020 - PLS 2675 FOUND 3/4" IRON ROD FLUSH WITH THE MARSH SURFACE AND 2 WITNESSES. THE MONUMENT AGREES WITH BOTH WITNESSES. ACCEPTED THE 3/4" IRON ROD AS THE CORNER LOCATIONS. SET 4 NEW TIES AND MEASURED TO THE EXISTING WITNESSES.



LOCATION

(INDICATE CORNER BY "X")

SEAL:



DATA SHOWN HERE ON THIS TIE SHEET IS CORRECT AND COMPLETE TO THE BEST OF MY KNOWLEDGE AND BELIEF.

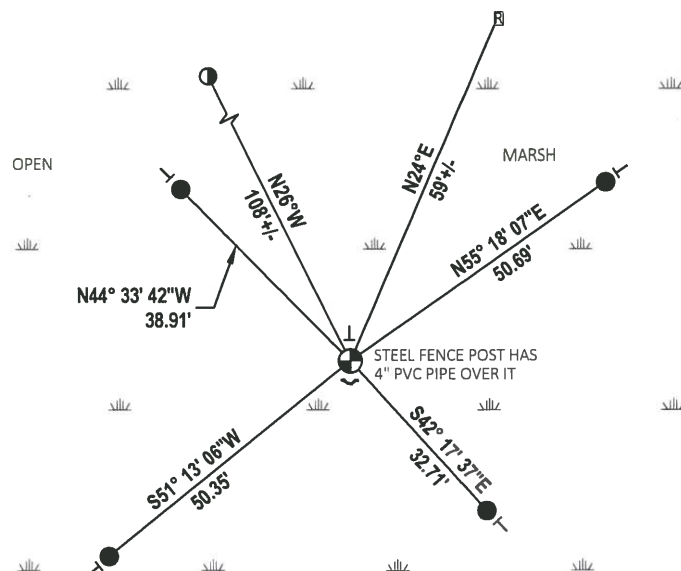
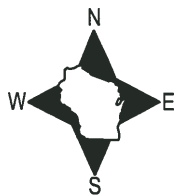
PROFESSIONAL LAND SURVEYOR

DATE 3/9/2020

- TIE SKETCH

NOTE: THE CORNER LANDS 126± SOUTH OF STH "21" CENTERLINE.

STH "21"



- SET 3/4" x 18" IRON REBAR, 1.50#/FT
- 4" X 4" RW PLASTIC POST TOP CENTER
- ⊕ FOUND 3/4" IRON ROD
- NOTCH IN TOP CENTER CMCP CULVERT
- ↗ STEEL FENCE POST
- ← VINYL "T" POST

Government Land Corner Certificate

ADAMS County

TYPE OF MONUMENT: 3/4" x 24" IRON BAR / TO REPLACE SPRING 1981

STATE PLANE COORDINATES: N _____
E _____

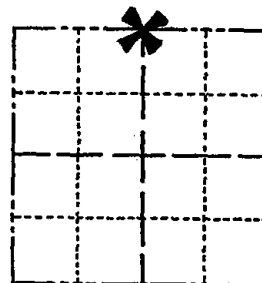
ELEVATION — M.S.L. DATUM: _____

THETA ANGLE: _____

FIELD BOOK: A-F 3 PAGE 42

DRAWN BY: S. SORENSEN

CORNER NO. 64
SECTION 20
TOWN 18
RANGE 7



LOCATION
(Indicated by 'X')

BASIS FOR MONUMENT LOCATION

Show info such as: History of corner, with reference to Vol. and pg., dates, surveyor; exact description of monument replaced; if location computed, by taped or EDM traverse; landowner remarks, etc. (Use reverse side if necessary)

Set corner equidistant and on line between adjacent section corners. A thorough search revealed no previous monumentation or bearings. This point fits the topography indicated by original and subsequent bearings (As recorded in loose notes filed in Adams County surveyor's office.)

SEAL:



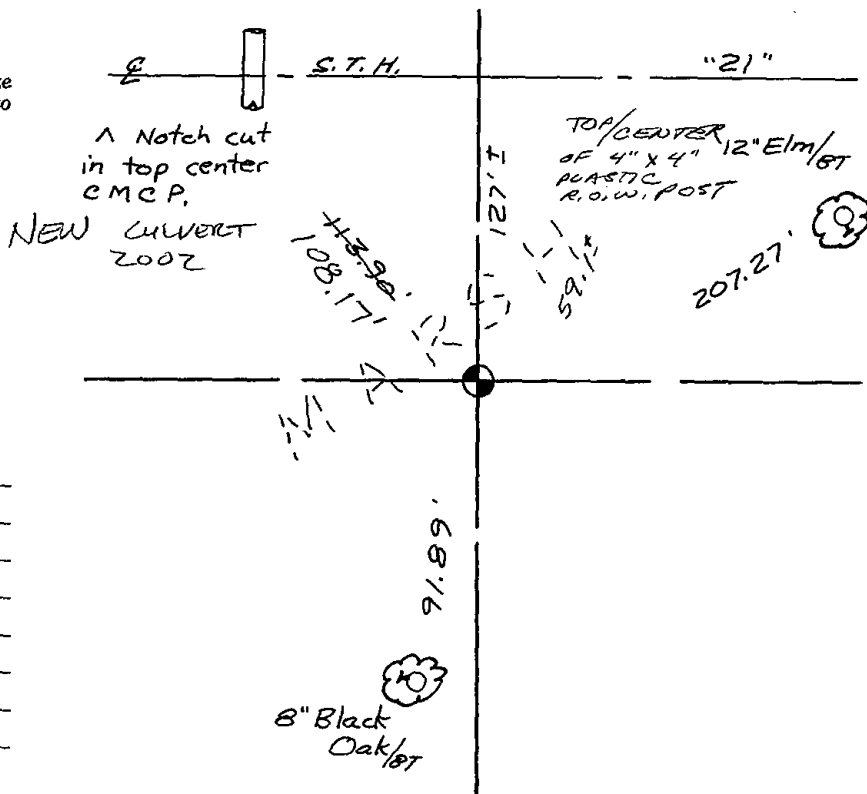
DATA SHOWN HERE ON
CERTIFIED CORRECT:

Gregory P. Rhinehart
Registered Land Surveyor

DATE: 2-24-81

TIE SKETCH

Show at least four ties, also fence lines, roads, topo, size and type of witness trees' and if off road - best way to arrive at corner.



MAINTENANCE RECORD

Date	Init.	Remarks
8-20-82	AK-SS	
2-20-87	SS	ties OK
1-10-92	JG	"
1-2-98	SS	3/4" Rod, FD
1-18-02	GR-JG	1 NEW TIE
4-11-07	JG	OK
03-07-12	MS-SS	FD, 3/4" Rod