

PUBLIC LAND SURVEY MONUMENT RECORD

TYPE OF MONUMENT: HARRISON
 ADAMS COUNTY COORDINATES, NAD 83 (2007)

N. 240275.712

E. 567534.851

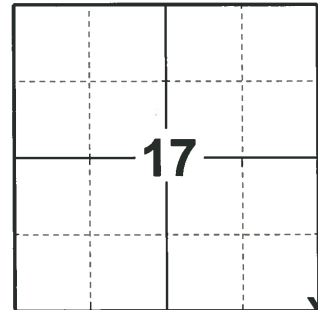
ELEVATION- _____ DATUM _____

FIELD WORK DATE: 01/10/2020

BASIS FOR MONUMENT LOCATION

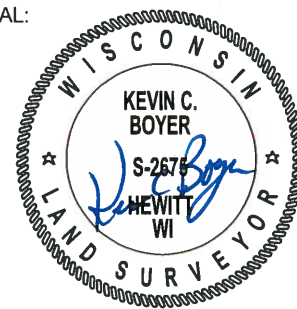
1977 - PLS 1103 RAN EDM/TRANSIT TRAVERSE AROUND ALL OR PARTS OF SECTIONS 19, 20, 21, 22, AND 23 TO DETERMINE SEARCH AREAS. INVESTIGATION YIELDED NO CONCLUSIVE EVIDENCE OF THE ORIGINAL CORNER, REMONUMENTATION OR ANY ACCESSORY MONUMENTS. PRORATED TO FIT EXISTING EVIDENCE IN THE EAST/WEST DIRECTION. SET AT RECORD DISTANCE FROM STH 21 AS PER RIGHT OF WAY PLANS. LOCATION FITS ORIGINAL CALL TO SHIP ROCK ALONG NORTH LINE OF SECTION 21 QUITE WELL. SET HARRISON MONUMENT AND TIED OUT.

2020 - PLS 2675 FOUND HARRISON MONUMENT 4"± ABOVE THE GROUND SURFACE AND DID NOT RECOVER ANY TIES OR WITNESSES. ACCEPTED THE HARRISON MONUMENT AS THE CORNER LOCATION AND SET 4 NEW TIES.



LOCATION
 (INDICATE CORNER BY "X")

SEAL:



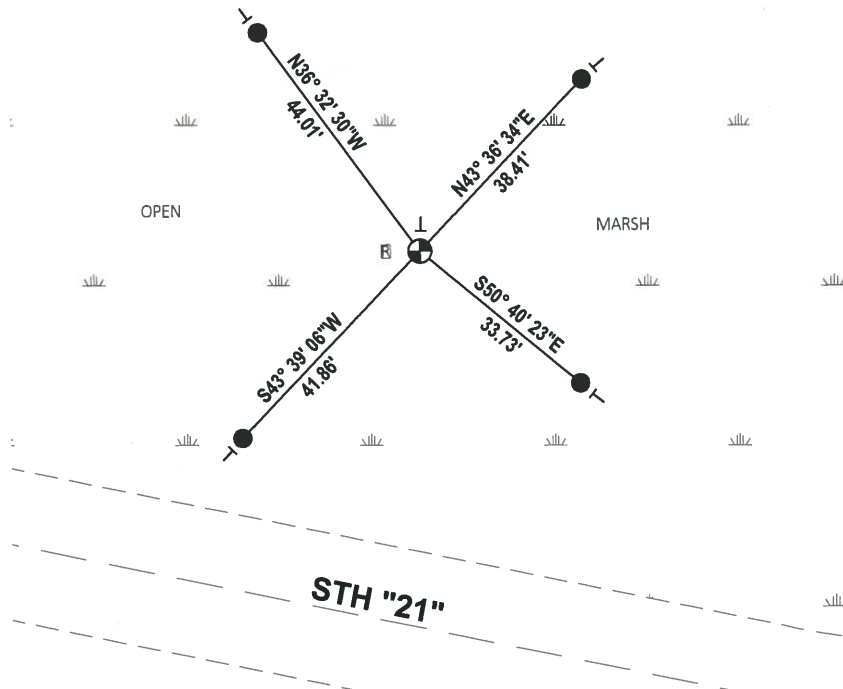
DATA SHOWN HERE ON THIS TIE SHEET IS CORRECT AND COMPLETE TO THE BEST OF MY KNOWLEDGE AND BELIEF.

PROFESSIONAL LAND SURVEYOR

DATE 3/9/2020

- TIE SKETCH

NOTE: THE CORNER LANDS 181'± NORTH OF STH "21" CENTERLINE.



- SET 3/4" x 18" IRON REBAR, 1.50#/FT
- ⊕ FOUND HARRISON MONUMENT
- ┆ VINYL "T" POST
- ⊞ 3" X 3" PLASTIC R/W POST

ADAMS COUNTY

Survey Monument Record

TYPE OF MONUMENT: Harrison Monument

STATE PLANE COORDINATES: N _____

E _____

ELEVATION — M.S.L. DATUM: _____

THETA ANGLE: _____

FIELD BOOK: _____ PAGE _____

CORNER NO. 65

SECTION 21

TOWN 18 N

RANGE 7 E



LOCATION
(Indicated by 'X')

SEAL:



BASIS FOR MONUMENT LOCATION

(Use reverse side if necessary)

Show info such as: History of corner, with reference to Vol. and pg, dates, surveyor; exact description of monument replaced; if location computed, by taped or EDM traverse; landowner remarks, etc.

Ran EDM/transit traverse around all or parts of Sections 19, 20, 21, 22 and 23 to determine search areas.

Investigation yielded no conclusive evidence of the original corner, remonumentation or any accessory monuments.

Prorated to fit existing evidence in the East/West direction. Set at record distance from S.T.H. 21 as per right of way plans.

Location fits original call to Ship Rock along North line of Section 21 quite well.

Set Monument 12-2-76

O.K. 8-20-82 PR-55
" 2-20-87 55

1-GONE, 1-NEW COR OK, 1-10-92, 56
OK 1-2-98 55

CERTIFIED CORRECT:

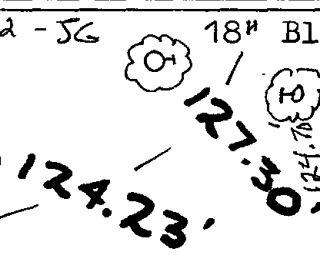
Dale C Hagen
Registered Land Surveyor

DATE: 2-8-77

TIE SKETCH OK 1-08-82 - 56 18" Black Oak/BT (STUMP, NAIL STILL GOOD)

(Show at least four ties)

44" Black Oak/BT
GONE



14" ASPEN/BT
NAIL 3' HIGH

3" x 2" YELLOW
PLASTIC R/W POST

236.50'

8" White Oak/BT

* HARRISON FOUND
COMPLETELY OUT OF THE
GROUND, NEEDS TO BE
RESET & RETIED
4-11-07-56

MARSH

223.00'

155.37'

'Do Not Pass'
Sign Post

12" Black Oak/BT

State Trunk

Highway '21'