

16
SECTION

18
TOWN

07
RANGE

ADAMS COUNTY

COUNTY CORNER NO: 66

ROMPORTOL ID: 41807160020

PUBLIC LAND SURVEY MONUMENT RECORD

TYPE OF MONUMENT: HARRISON (BROKEN-TOP)
ADAMS COUNTY COORDINATES, NAD 83 (2007)

N. 240306.465

E. 570189.300

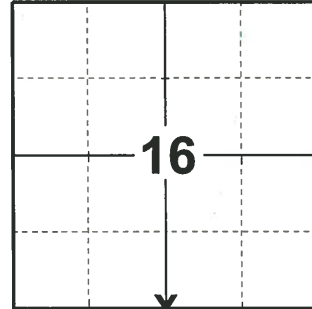
ELEVATION- - - DATUM - -

FIELD WORK DATE: 01/10/2020

BASIS FOR MONUMENT LOCATION

1976 - PLS 1103 RAN EDM/T2 TRAVERSE AROUND ALL OR PARTS OF SECTIONS 19, 20, 21, 22, 23 TO DETERMINE SEARCH AREAS. INVESTIGATION YIELDED NO EVIDENCE OF THE ORIGINAL CORNER OR ANY REMONUMENTATION. COULD FIND NO EVIDENCE OF BEARING TREES, OR A RECORD OF THE ROAD (NOW OVERGROWN) THAT LIES APPROXIMATELY 45 FEET NORTH OF THE CORNER. RE-ESTABLISHED CORNER BY SINGLE PROPORTIONATE MEASURE AND ONLINE BETWEEN ADJACENT SECTION CORNERS. SET HARRISON MONUMENT AND TIED OUT.

2020 - PLS 2675 FOUND HARRISON (BROKEN-TOP) 6"± BELOW THE GROUND AND 1 TIE. THE MONUMENT AGREES WITH THE TIE. ACCEPTED THE HARRISON (BROKEN-TOP) AS THE CORNER LOCATION. SET 4 NEW TIES AND MEASURED TO THE EXISTING TIE.



LOCATION

(INDICATE CORNER BY "X")

SEAL:



DATA SHOWN HERE ON THIS TIE SHEET IS CORRECT AND COMPLETE TO THE BEST OF MY KNOWLEDGE AND BELIEF.

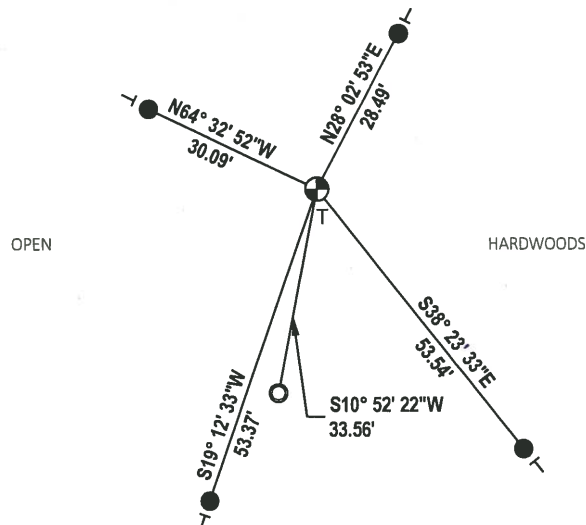
PROFESSIONAL LAND SURVEYOR

DATE 3/9/2020

TIE SKETCH

NOTE: THE CORNER LANDS 45'± SOUTH OF THE ABANDONED ROAD

CENTERLINE OF ABANDONED ROAD (OVER GROWN)



- SET 3/4" x 18" IRON REBAR, 1.50#/FT
- FOUND 1-1/4" O.D. IRON PIPE
- ⊕ FOUND HARRISON (BROKEN-TOP) MONUMENT
- VINYL "T" POST

ADAMS COUNTY

Survey Monument Record

TYPE OF MONUMENT: Standard Harrison

STATE PLANE COORDINATES: N _____

E _____

ELEVATION — M.S.L. DATUM: _____

THETA ANGLE: _____

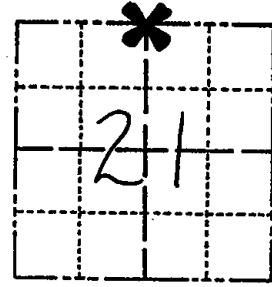
FIELD BOOK: 37 PAGE 62

CORNER NO. 66

SECTION 21

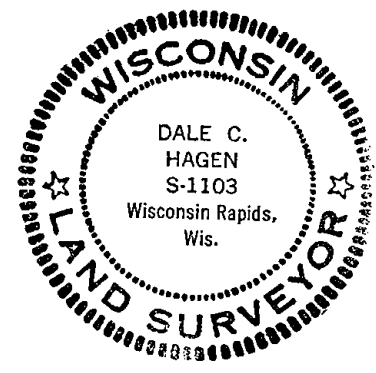
TOWN 18

RANGE 7



LOCATION
(Indicated by 'X')

SEAL:



BASIS FOR MONUMENT LOCATION

(Use reverse side if necessary)

Show info such as: History of corner, with reference to Vol. and pg. dates, surveyor; exact description of monument replaced; if location computed, by taped or EDM traverse; landowner remarks, etc.

Ran EDM/T2 traverse around all or parts of Sections 19, 20, 21, 22, 23 to determine search areas.

Investigation yielded no evidence of the original corner or any remonumentation. Could find no evidence of bearing trees, or a record of the road (now overgrown) that lies approximately 45 North of this corner.

Re-established corner by single proportionate measure and online between adjacent section corners.

Set Harrison monument of 7-20-76.

- O.K. 8-25-82 PK-SS
- " 2-20-87 SS
- " 1-10-92 JG

CERTIFIED CORRECT:

Dale C Hagen
Registered Land Surveyor

DATE: 12-2-76

TOP BROKEN - BOTTOM IN PLACE - 1 ^{TIE} GONE - 1 NEW - 4-21-97 JG-SS

TIE SKETCH DK 1-08-02 JG
OK, 4-20-07- JG

(Show at least four ties)

NOTE

Ties in trees to nail in disc.

