

PUBLIC LAND SURVEY MONUMENT RECORD

TYPE OF MONUMENT: HARRISON
 ADAMS COUNTY COORDINATES, NAD 83 (2007)

N. 240337.283

E. 572843.698

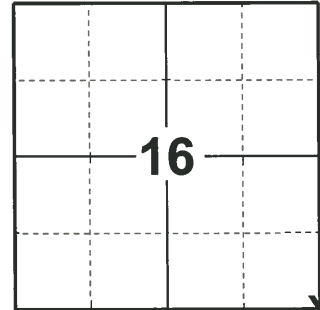
ELEVATION- _____ DATUM _____

FIELD WORK DATE: 01/09/2020

BASIS FOR MONUMENT LOCATION

1976 - PLS 1103 RAN EDM/T2 TRAVERSE AROUND ALL OR PARTS OF SECTIONS 19, 20, 21, 22, 23 TO DETERMINE SEARCH AREA. EXCAVATION WITH BACKHOE YIELDED NO CONCLUSIVE EVIDENCE OF THE ORIGINAL CORNER OR ANY REMONUMENTATION. COULD FIND NO ACCESSORY MONUMENTS. RE-ESTABLISHED BY DOUBLING OVER LINE BETWEEN THE SOUTHEAST CORNER AND THE EAST QUARTER CORNER OF SECTION 21, WHERE COUNTY SURVEYOR A. KIEDROWSKI FOUND ORIGINAL POSTS.

2020 - PLS 2675 FOUND HARRISON MONUMENT 12"± BELOW THE FIELD DRIVEWAY SURFACE AND 4 WITNESSES. THE MONUMENT AGREES WITH ALL THE WITNESSES. ACCEPTED THE HARRISON MONUMENT AS THE CORNER LOCATION. SET 4 NEW TIES AND MEASURED TO THE EXISTING WITNESSES.



LOCATION
 (INDICATE CORNER BY "X")

SEAL:



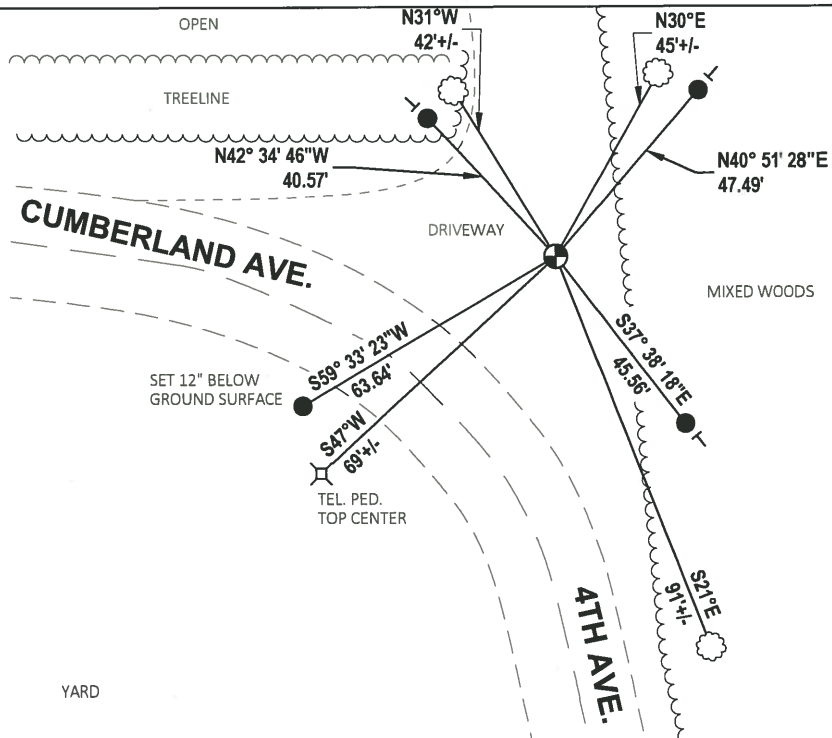
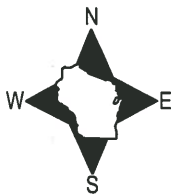
DATA SHOWN HERE ON THIS TIE SHEET IS CORRECT AND COMPLETE TO THE BEST OF MY KNOWLEDGE AND BELIEF.

PROFESSIONAL LAND SURVEYOR

DATE 3/9/2020

TIE SKETCH

NOTE: THE CORNER LANDS 40'± NORHTEAST OF CUMBERLAND AND 4TH AVE CENTERLINE.



- SET 3/4" x 18" IRON REBAR, 1.50#/FT
- ⊕ FOUND HARRISON MONUMENT
- VINYL "T" POST
- ☉ WITNESS TREE

YARD

ADAMS COUNTY

Survey Monument Record

TYPE OF MONUMENT: Harrison Monument

STATE PLANE COORDINATES: N _____

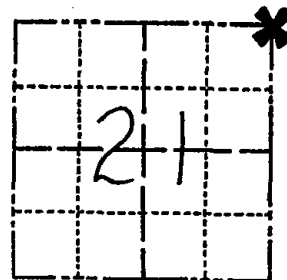
E _____

ELEVATION — M.S.L. DATUM: _____

THETA ANGLE: _____

FIELD BOOK: 37 PAGE 62

CORNER NO. 67
SECTION 21
TOWN 18
RANGE 7



LOCATION
(Indicated by 'X')

SEAL:



BASIS FOR MONUMENT LOCATION

(Use reverse side if necessary)

Show info such as: History of corner, with reference to Vol. and pg, dates, surveyor; exact description of monument replaced; if location computed, by taped or EDM traverse; landowner remarks, etc.

Ran EDM/T2 traverse around all or parts of Sections 19, 20, 21, 22, 23 to determine search area.

Excavation with backhoe yielded no conclusive evidence of the original corner or any remonumentation. Could find no accessory monuments.

Re-established by doubling over line between the Southeast corner and the East Quarter corner of Section 21, where County Surveyor Anthony Kiedrowski found original posts.

Set Harrison 7-20-76.

COR. OK 5-17-82 PK-SS
2 NEW TIES WEST 2-20-87-SS

COR OK 1-10-92 - SG

OK 4-21-97 JG-SS

OK 1-08-02 JG

CERTIFIED CORRECT:

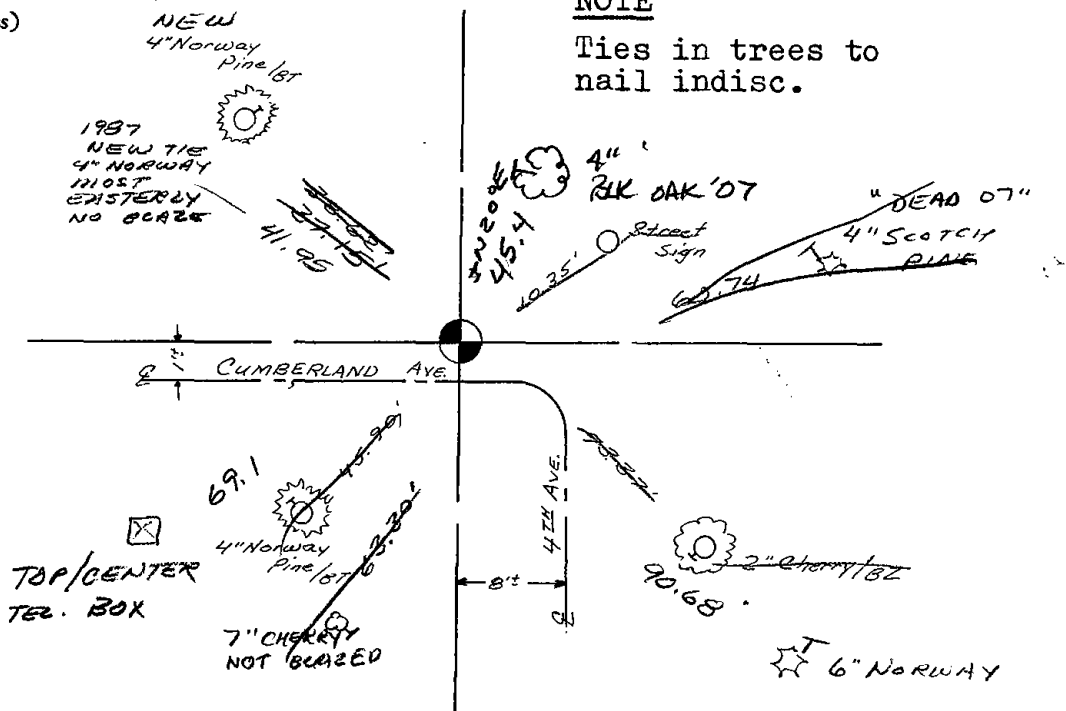
Dale C. Hagen
Registered Land Surveyor

DATE: 12-2-76

TIE SKETCH

2 NEW 3-23-07 JG-SS

(Show at least four ties)



NOTE

Ties in trees to nail indisc.

