

15 SECTION    18 TOWN    07 RANGE

# ADAMS COUNTY

COUNTY CORNER NO: 69  
 ROMPORTOL ID: 41807150000

## PUBLIC LAND SURVEY MONUMENT RECORD

TYPE OF MONUMENT: HARRISON  
 ADAMS COUNTY COORDINATES, NAD 83 (2007)

N. 240382.337

E. 578098.122

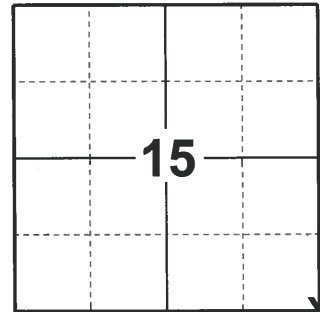
ELEVATION- \_\_\_\_\_ DATUM \_\_\_\_\_

FIELD WORK DATE: 01/17/2020

### BASIS FOR MONUMENT LOCATION

1976 - PLS 878 EXCAVATED WITH BACKHOE AND FOUND 2 STONES-THE TOP STONE WAS 8"X10"X14" POINTED BLACK GRANITE WITH THE POINT UP, AND THE BOTTOM 10"X10"X8" FLAT RED GRANITE LAID FLAT BENEATH THE BLACK GRANITE. LOWERED STONES AND SET HARRISON ON TOP.

2020 - PLS 2675 FOUND HARRISON MONUMENT 6"± BELOW THE ROAD SURFACE AND 1 WITNESS. THE MONUMENT AGREES WITH THE WITNESS. ACCEPTED THE HARRISON AS THE CORNER LOCATION. SET 4 NEW TIES AND MEASURED TO THE EXISTING WITNESS.



LOCATION

(INDICATE CORNER BY "X")

SEAL:



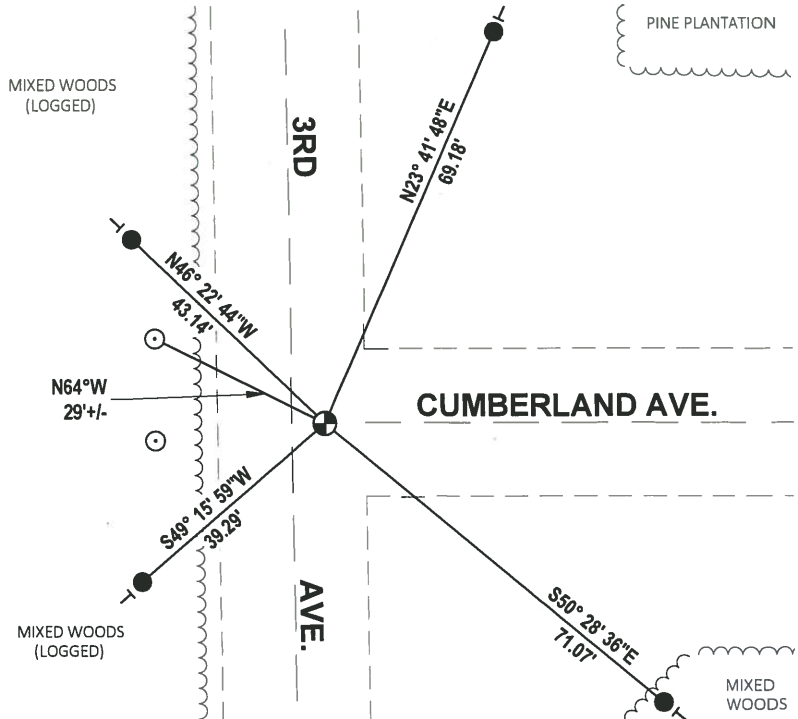
DATA SHOWN HERE ON THIS TIE SHEET IS CORRECT AND COMPLETE TO THE BEST OF MY KNOWLEDGE AND BELIEF.

PROFESSIONAL LAND SURVEYOR

DATE 3/9/2020

### TIE SKETCH

NOTE: THE CORNER LANDS 5.4'± EAST OF 3RD AVE. CENTERLINE AND ON THE CENTERLINE OF CUMBERLAND AVE.



- SET 3/4" x 18" IRON REBAR, 1.50#/FT
- 2" SQUARE IRON GATE POST
- ⊕ FOUND HARRISON MONUMENT
- ┊ VINYL "T" POST

**ADAMS COUNTY**

**Survey Monument Record**

TYPE OF MONUMENT: Harrison

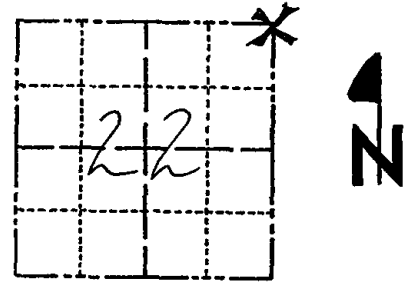
STATE PLANE COORDINATES: N \_\_\_\_\_  
E \_\_\_\_\_

ELEVATION — M.S.L. DATUM: \_\_\_\_\_

THETA ANGLE: \_\_\_\_\_

FIELD BOOK: 41 PAGE 18

CORNER NO. 69  
1087  
SECTION 22  
TOWN 18  
RANGE 7



LOCATION  
(Indicated by 'X')

**BASIS FOR MONUMENT LOCATION**

(Use reverse side if necessary)

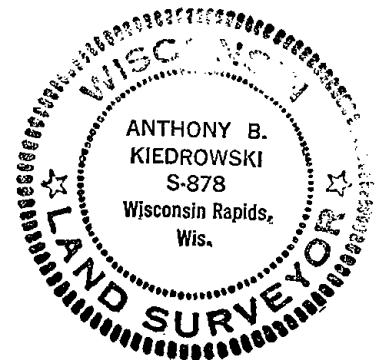
Show info such as: History of corner, with reference to Vol. and pg. dates, surveyor; exact description of monument replaced; if location computed, by taped or EDM traverse; landowner remarks, etc.

Excavated with backhoe and found 2 stones—the top stone was 8"x10"x14" pointed black granite with the point up, and the bottom 10"x10"x8" flat red granite laid flat beneath the black granite.

Lowered stones and set Harrison on top.

Set 5-20-76.

SEAL:



CORNER	O.K.	3-14-77 - GR-SS
"	"	5-17-82 - PK-SS
"	"	2-18-87 - SS
"	"	11-26-91 - KZ-SS
"	"	2-18-97 - JG-SS
"	"	1-14-02 - JG
"	"	4-11-07 - JG

CERTIFIED CORRECT:

*Anthony B. Kiedrowski*  
Registered Land Surveyor  
DATE: 9-21-76

**TIE SKETCH**

(Show at least four ties)

NOTE:

Ties in trees to nail and disc in blaze.

