

14 SECTION    18 TOWN    07 RANGE

# ADAMS COUNTY

COUNTY CORNER NO: 70  
 ROMPORTOL ID: 41807140020

## PUBLIC LAND SURVEY MONUMENT RECORD

TYPE OF MONUMENT: HARRISON  
 ADAMS COUNTY COORDINATES, NAD 83 (2007)

N. 240387.480

E. 580766.827

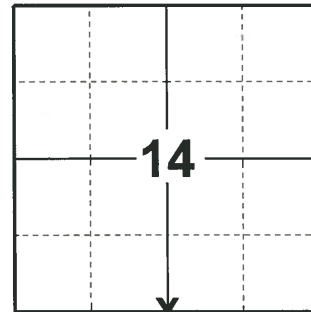
ELEVATION- \_\_\_\_\_ DATUM \_\_\_\_\_

FIELD WORK DATE: 01/17/2020

### BASIS FOR MONUMENT LOCATION

1977 - PLS 1103 RAN EDM/TRANSIT TRAVERSE BETWEEN RECOVERED NORTHEAST AND NORTHWEST CORNERS OF THIS SECTION. EXCAVATION WITH BACKHOE YIELDED NO EVIDENCE OF THE ORIGINAL CORNER OR ANY REMONUMENTATION. RE-ESTABLISHED CORNER EQUIDISTANT AND ON LINE BETWEEN THE NORTHEAST AND NORTHWEST CORNERS OF THIS SECTION.

2020 - PLS 2675 FOUND HARRISON MONUMENT 6"± BELOW THE ROAD SURFACE, 1 TIE, AND 1 WITNESS. THE MONUMENT AGREES WITH THE TIE AND WITNESS. ACCEPTED THE HARRISON MONUMENT AS THE CORNER LOCATION. SET 3 NEW TIES AND MEASURED TO THE EXISTING TIE AND WITNESS.



**LOCATION**

(INDICATE CORNER BY "X")

SEAL:



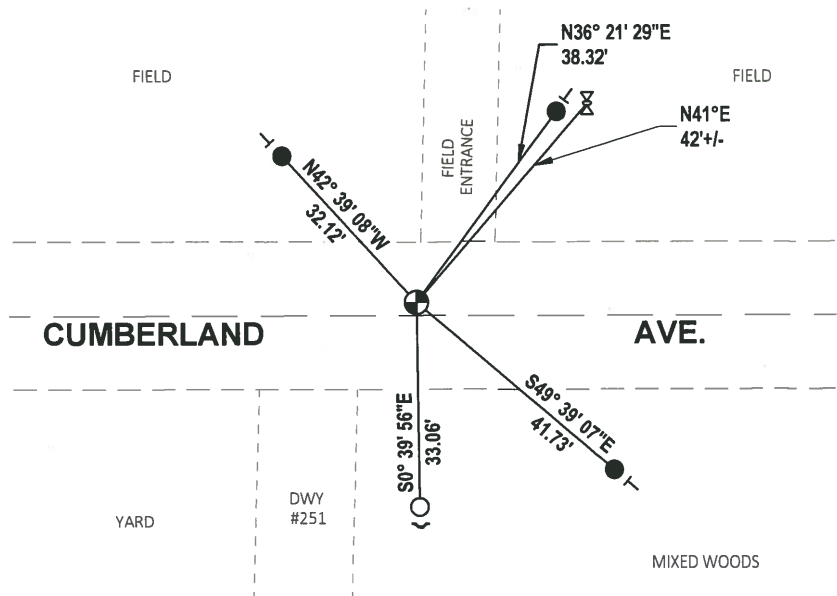
DATA SHOWN HERE ON THIS TIE SHEET IS CORRECT AND COMPLETE TO THE BEST OF MY KNOWLEDGE AND BELIEF.

PROFESSIONAL LAND SURVEYOR

DATE 3/9/2020

### TIE SKETCH

NOTE: THE CORNER LANDS 2'± NORTH OF CUMBERLAND AVE. CENTERLINE



- SET 3/4" x 18" IRON REBAR, 1.50#/FT
- FOUND 3/4" IRON ROD
- ⊕ FOUND HARRISON MONUMENT
- ┌ STEEL FENCE POST
- └ VINYL "T" POST
- ⊗ ELEC. METER POWER POLE

ADAMS COUNTY

Survey Monument Record

TYPE OF MONUMENT: Standard Harrison

STATE PLANE COORDINATES: N \_\_\_\_\_

E \_\_\_\_\_

ELEVATION — M.S.L. DATUM: \_\_\_\_\_

THETA ANGLE: \_\_\_\_\_

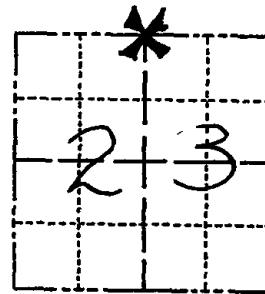
FIELD BOOK: 34 PAGE 70

CORNER NO. 70

SECTION 23

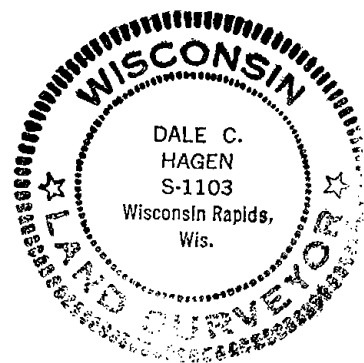
TOWN 18 N

RANGE 7 E



LOCATION  
(Indicated by 'X')

SEAL:



BASIS FOR MONUMENT LOCATION

(Use reverse side if necessary)

Show info such as: History of corner, with reference to Vol. and pg, dates, surveyor; exact description of monument replaced; if location computed, by taped or EDM traverse; landowner remarks, etc.

Ran EDM/transit traverse between recovered Northeast and Northwest corners of this section.

Excavation with backhoe yielded no evidence of the original corner or any remonumentation.

Re-established corner equidistant and on line between the Northeast and Northwest corners of this section.

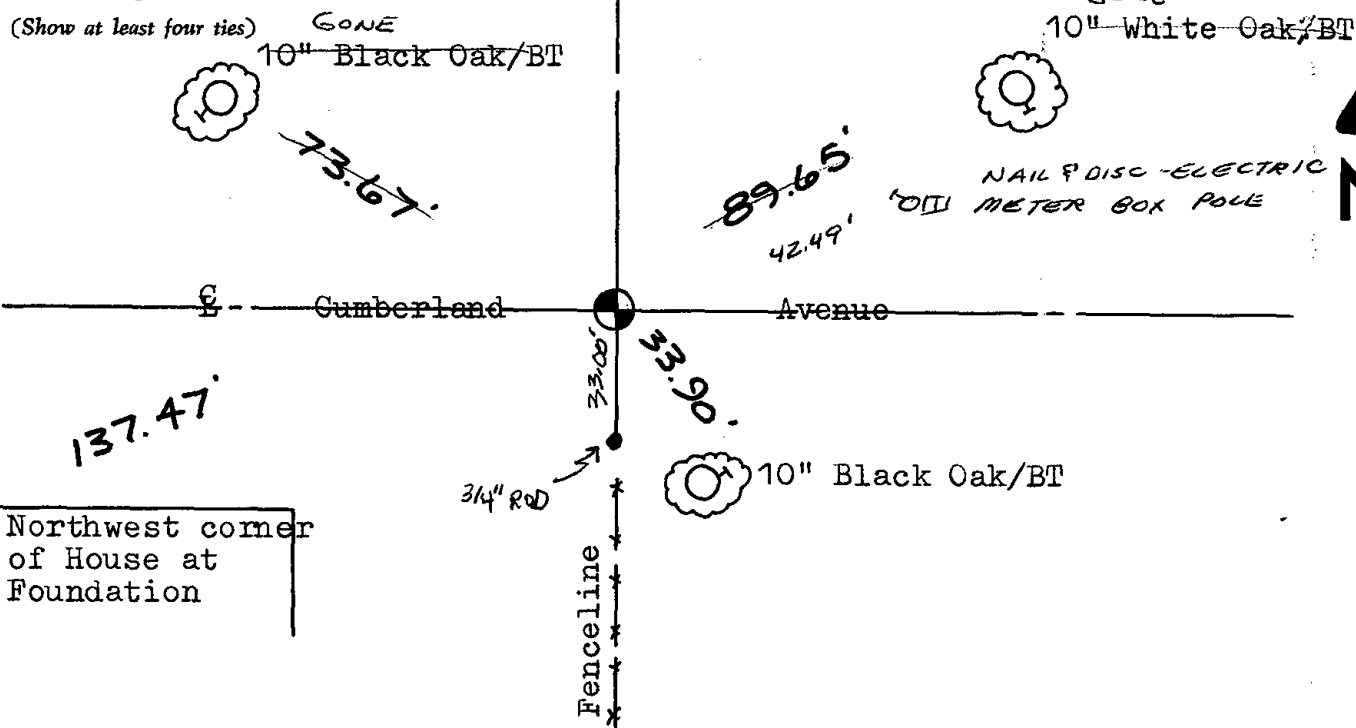
Cor	O.K.	5-17-82	PK-SS
"	"	2-18-87	SS
"	"	11-26-91	KZ-SS
"	"	2-18-97	JG-SS
"	"	1-14-02	JG
1-NEW TIE, 4-11-07 - JG			
OK 02-28-12 MS			

CERTIFIED CORRECT:

Dale C Hagen  
Registered Land Surveyor  
DATE: 2-3-77

TIE SKETCH

(Show at least four ties)



Northwest corner  
of House at  
Foundation