

13 SECTION 18 TOWN 07 RANGE

ADAMS COUNTY

COUNTY CORNER NO: 73

ROMPORTOL ID: 41807130000

PUBLIC LAND SURVEY MONUMENT RECORD

TYPE OF MONUMENT: HARRISON
 ADAMS COUNTY COORDINATES, NAD 83 (2007)

N. 240519.566

E. 588727.345

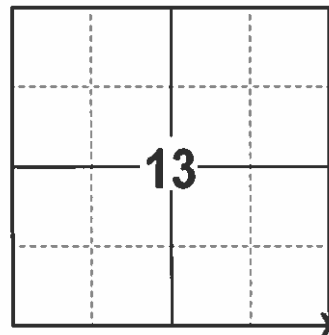
ELEVATION- DATUM

FIELD WORK DATE: 1/9/2017

BASIS FOR MONUMENT LOCATION

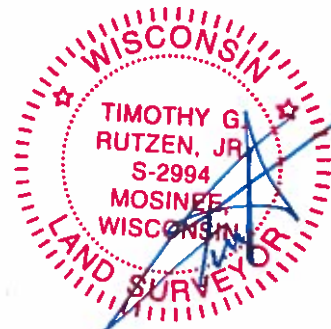
1973 - PLS 878 EXCAVATED AND FOUND NOTHING. TRAVERSED THE ENTIRE SECTION, COMPARED POSSESSION AND GOVERNMENT NOTES AND SET A HARRISON.

2017 - PLS 2994 FOUND EXISTING HARRISON 18 INCHES BELOW THE ROAD SURFACE AND 1 EXISTING IRON AND 1 WITNESS. THE HARRISON AGREES WITH EXISTING WITNESS. ACCEPTED HARRISON AND SET 3 NEW TIES.



LOCATION
(INDICATE CORNER BY "X")

SEAL:

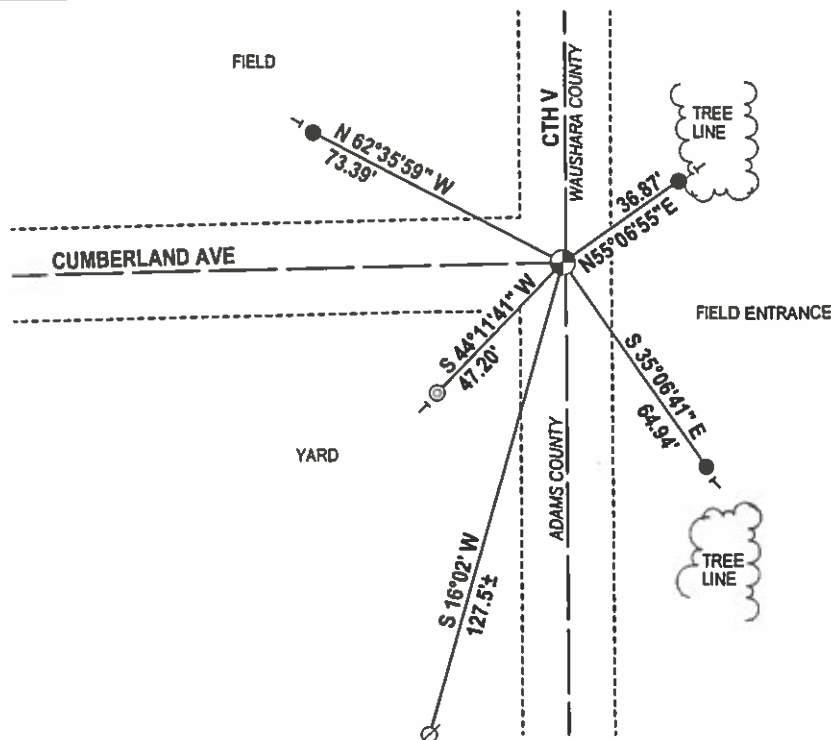
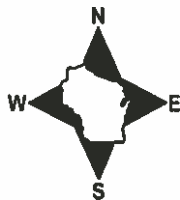


DATA SHOWN HERE ON THIS TIE SHEET IS CORRECT AND COMPLETE TO THE BEST OF MY KNOWLEDGE AND BELIEF.

PROFESSIONAL LAND SURVEYOR

DATE 2/9/17

TIE SKETCH



- 3/4" x 18" IRON REBAR SET, 1.50#/FT
- ⊙ 3/4" IRON REBAR FOUND
- ⊗ NAIL IN POWER POLE FOUND
- ⊕ HARRISON FOUND
- VINYL "T" POST

ADAMS COUNTY

Survey Monument Record

TYPE OF MONUMENT: Harrison std.

STATE PLANE COORDINATES: N _____

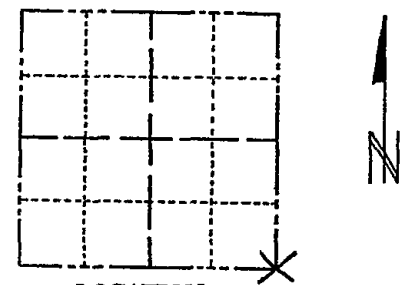
E _____

ELEVATION — M.S.L. DATUM: _____

THETA ANGLE: _____

FIELD BOOK: 108 PAGE 12

CORNER NO. 268
SECTION 13
TOWN 18
RANGE 7



LOCATION
(Indicated by 'X')

SEAL:

BASIS FOR MONUMENT LOCATION

(Use reverse side if necessary)

Show info such as: History of corner, with reference to Vol. and pg, dates, surveyor; exact description of monument replaced; if location computed, by taped or EDM traverse; landowner remarks, etc.

Set by traversing entire section, comparing ~~possession~~ possession lines and original notes. Excavated area with backhoe and found nothing.



CERTIFIED CORRECT:

Anthony B. Kiedrowski
Registered Land Surveyor

DATE: 4/11/73

CORNER O.K. 3-14-77 GR-SS
" " 5-17-82 PK-SS
" " 2-20-87 SS

2-GONE, 2-NEW, MON. OK 7-6-92 JG-BS

CORNER OK 12/18/91 JG-SS
OK 1-14-02 JG

TIE SKETCH

(Show at least four ties)

