

PUBLIC LAND SURVEY MONUMENT RECORD

TYPE OF MONUMENT: 3" X 6" STONE
 ADAMS COUNTY COORDINATES, NAD 83 (2007)

N. 235053.038

E. 567622.645

ELEVATION- - - - DATUM - - - -

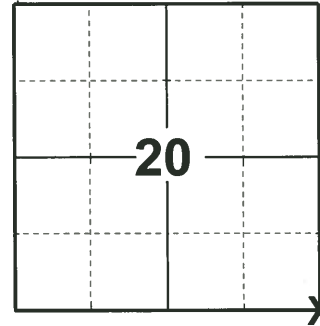
FIELD WORK DATE: 01/13/2020

BASIS FOR MONUMENT LOCATION

1981 - PLS 1478 THE LOCATION FOR THIS CORNER WAS DETERMINED BY DOUBLING OVER THE SOUTH LINE (E1/2) OF SECTION 21-18-07. THIS IS A RETRACEMENT OF AN M.C. SMITH SURVEY OF THE SOUTH HALF OF SAID SECTION 21 AS RECORDED IN VOL. 2 PAGE 96 OF THE A.C.S.R. THE STONE INDICATED IN THESE RECORDS WAS NOT RECOVERED IN SEVERAL SEARCHES.

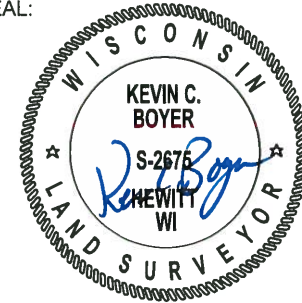
1983 - PLS 1551 STONE MENTIONED IN 1908 SURVEY OF SECTION 21 BY M.C. SMITH (ASCR VOL.1 PG 96) WAS FOUND STANDING UPRIGHT AND IN GOOD CONDITION. STONE IS A REDDISH SANDSTONE, RECTANGULAR IN SHAPE, TOP IS 3" WIDE AND 6" LONG IN THE E-W DIRECTION, AND EXTENDS BELOW GROUND ABOUT 25-30". THE LOCATION OF THE STONE CHECKS WELL WITH THE CORNER ESTABLISHED TO THE SOUTH, WITHIN 3 FEET OF THE ORIGINAL DISTANCE, AND IS WITHIN 10 FEET OF THE ORIGINAL DISTANCE TO THE NEXT HARRISON MONUMENT TO THE WEST.

2020 - PLS 2675 FOUND 3" X 6" STONE 2"± ABOVE THE MARSH SURFACE, 1 TIE, AND 1 WITNESS. THE MONUMENT AGREES WITH THE EXISTING TIE AND WITNESS. ACCEPTED THE 3" X 6" STONE AS THE CORNER LOCATION. SET 4 NEW TIES AND MEASURED THE EXISTING TIE AND WITNESS.



LOCATION
 (INDICATE CORNER BY "X")

SEAL:



DATA SHOWN HERE ON THIS TIE SHEET IS CORRECT AND COMPLETE TO THE BEST OF MY KNOWLEDGE AND BELIEF.

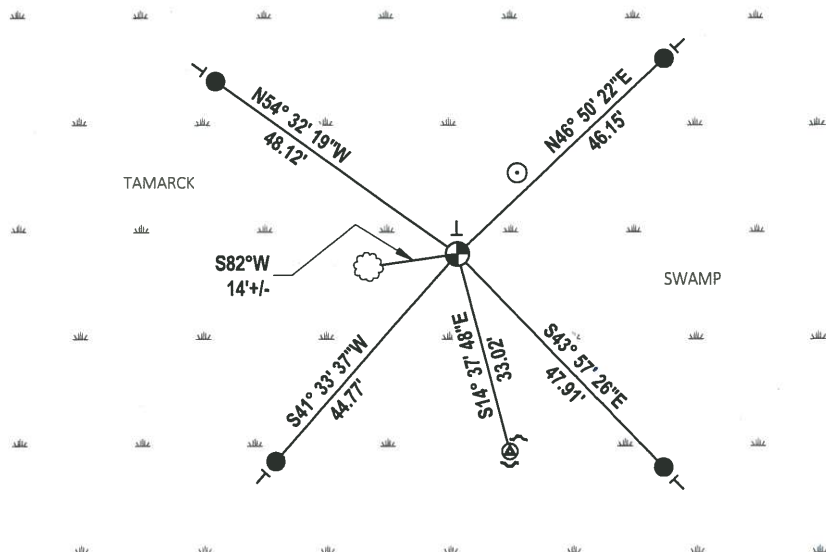
PROFESSIONAL LAND SURVEYOR

DATE 3/9/2020

TIE SKETCH



- SET 3/4" x 18" IRON REBAR, 1.50#/FT
- STEEL POST
- ⊕ FOUND 3" X 6" STONE MONUMENT
- ⊙ FOUND HARRISON MONUMENT
- ↵ STEEL FENCE POST
- ┆ VINYL "T" POST
- ⊗ WITNESS TREE



U.S. PUBLIC LAND SURVEY MONUMENT RECORD

ADAMS COUNTY

TYPE OF MONUMENT: Sandstone

STATE PLANE COORDINATES: N _____
E _____

ELEVATION — M.S.L. DATUM: _____

THETA ANGLE: _____

FIELD BOOK: 1 PAGE 3

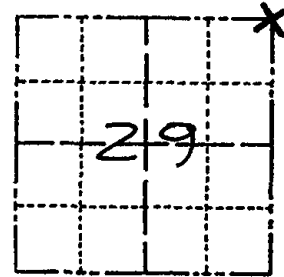
DRAWN BY: D Riesop

CORNER NO. 85

SECTION 29

TOWN 18N

RANGE 7E



LOCATION
(Indicated by 'X')



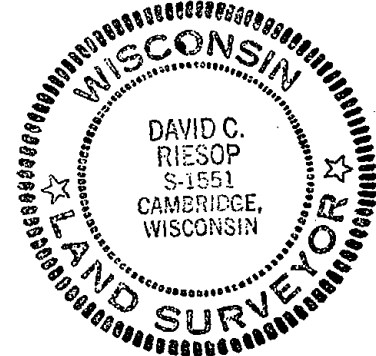
BASIS FOR MONUMENT LOCATION

Show info such as: History of corner, with reference to Vol. and pg., dates, surveyor; exact description of monument replaced; if location computed, by taped or EDM traverse; landowner remarks, etc. (Use reverse side if necessary) (in conformance with Section A-E 502 of the Wisconsin Administrative Code)

Stone mentioned in 1908 survey of Section 21 by M.C. Smith (ASCR Vol 1 P 96) was found standing upright and in good condition. Stone is a reddish sandstone, rectangular in shape, top is 3" wide and 6" long in the E-W direction, and extends below ground about 25-30".

The location of the stone checks well with the corner established to the South, within 3 feet of the orig. distance, and is within 10 feet of the original distance to the next Harrison monument to the West.

SEAL:



DATA SHOWN HERE ON
CERTIFIED CORRECT:

David C. Riesop
Registered Land Surveyor

DATE: 11/1/83

TIE SKETCH

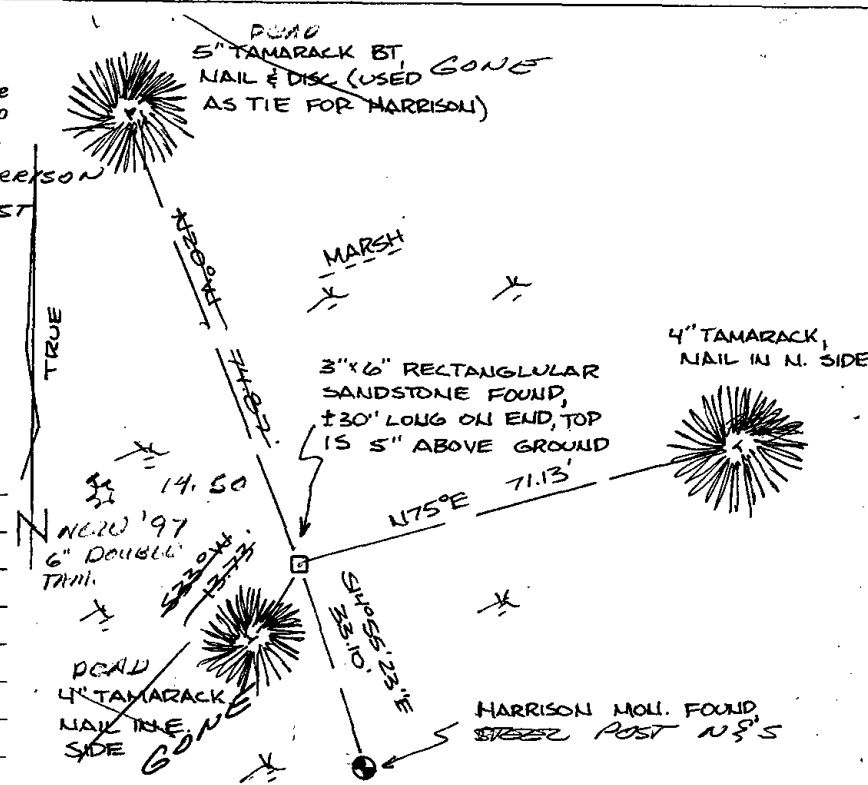
Show at least four ties, also fence lines, roads, topo, size and type of witness trees and if off road - best way to arrive at corner.

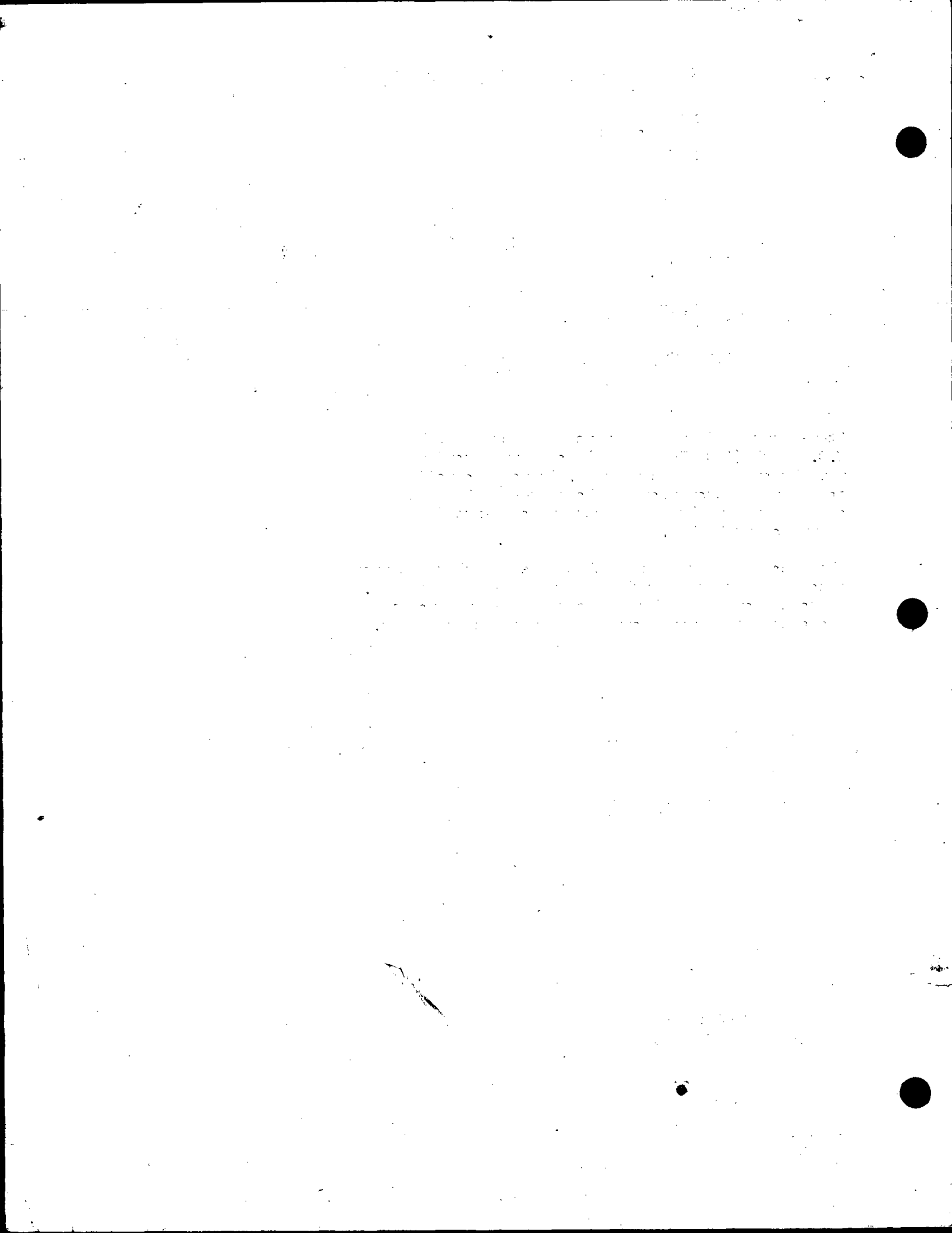
02-29-12 FO. STONE, FO. LINE OF STEEL POSTS NORTH FROM HARRISON ± 30' WIDE LANE CLEARED WEST OF STEEL POSTS

SCALE 8" = 30'

MAINTENANCE RECORD

Date	Init.	Remarks
11-6-97	JG-SS	2 NEW TIES
1-08-02	JG	OK
10-8-07	JG	OK
02-29-12	SS	OK





Government Land Corner Certificate

ADAMS County

TYPE OF MONUMENT: 1/2" x 12" IRON ROD / REPLACE IN SPRING 1981 HARRISON

STATE PLANE COORDINATES: N _____
E _____

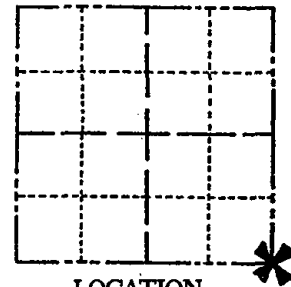
ELEVATION — M.S.L. DATUM: _____

THETA ANGLE: _____

FIELD BOOK: A-F 3 PAGE 41

DRAWN BY: S. SORENSEN

CORNER NO. 85
SECTION 20
TOWN 18
RANGE 7



LOCATION
(Indicated by 'X')

BASIS FOR MONUMENT LOCATION

Show info such as: History of corner, with reference to Vol. and pg., dates, surveyor; exact description of monument replaced; if location computed, by taped or EDM traverse; landowner remarks, etc. (Use reverse side if necessary)

The location for this corner was determined by doubling over the south line (E_{1/2}) of section 21-18-7. This is a retracement of an M.C. Smith survey of the south half of said Section 21 as recorded in Vol 2 page 96 of the A,C.S.R. The stone indicated in these records was not recovered in several searches.

SEAL:



DATA SHOWN HERE ON
CERTIFIED CORRECT:

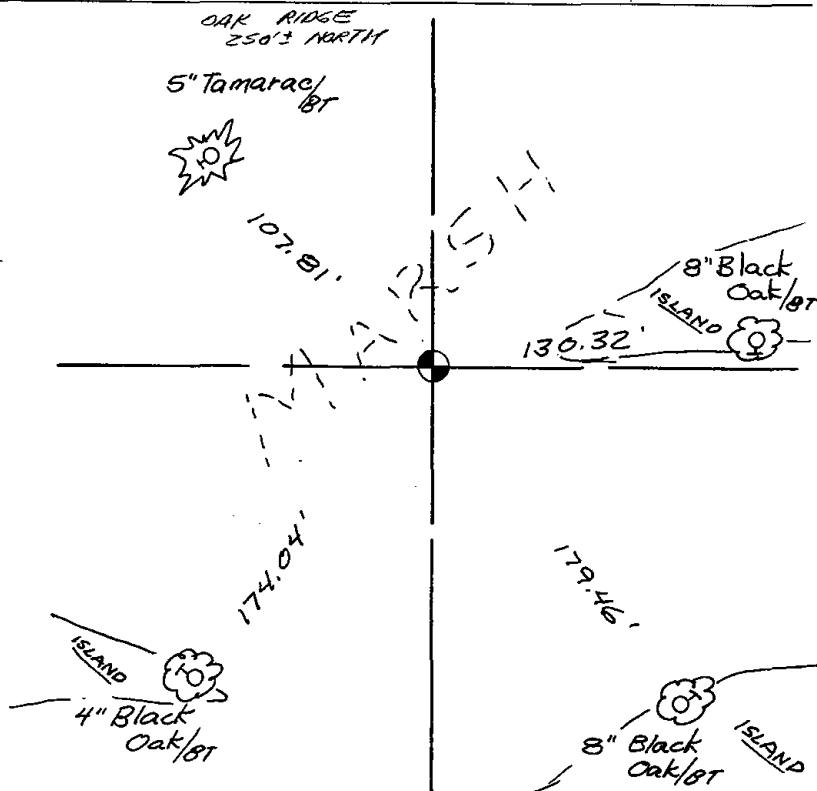
Gregory P. Rhinehart
Registered Land Surveyor

DATE: 2/24/81

TIE SKETCH

Show at least four ties, also fence lines, roads, topo, size and type of witness trees' and if off road - best way to arrive at corner.

STEEL POST @ CORNER



MAINTENANCE RECORD

Date	Init.	Remarks
8-17-82	PK-SS	OK
2-18-87	SS	OK
12-2-91	JG-SS	OK
1-08-02	JG	OK