

21  
SECTION

18  
TOWN

07  
RANGE

# ADAMS COUNTY

COUNTY CORNER NO: 86

ROMPORTOL ID: 41807210020

## PUBLIC LAND SURVEY MONUMENT RECORD

TYPE OF MONUMENT: HARRISON  
ADAMS COUNTY COORDINATES, NAD 83 (2007)

N. 235038.506

E. 570263.739

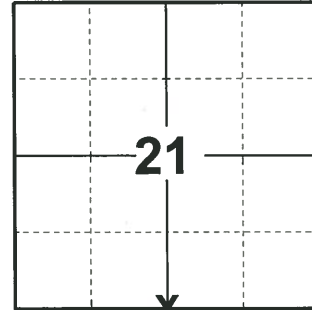
ELEVATION- - - - DATUM - - - -

FIELD WORK DATE: 01/13/2020

### BASIS FOR MONUMENT LOCATION

1976 - PLS 1103 RAN EDM/TRANSIT TRAVERSE AROUND PORTIONS OF SECTION 21, 22, AND 23 TO DETERMINE SEARCH AREAS FOR INVESTIGATION. FOUND REMAINS OF POST SET BY M.C. SMITH, JULY 1, 1908 (VOL. 1, PG. 96) AND VERIFIED BY STUMP OF BEARING TREE (16" BLACK OAK, N64.5W, 418.5 LINKS). BEARING TREE TO THE NORTHEAST APPARENTLY NOT BY SMITH. REPLACED POST WITH HARRISON MONUMENT.

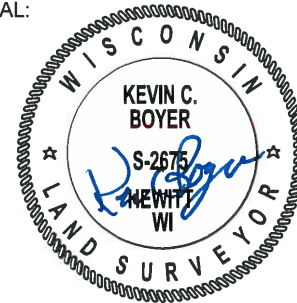
2020 - PLS 2675 FOUND HARRISON 4"± ABOVE THE MARSH SURFACE AND 1 TIE. THE MONUMENT AGREES WITH THE TIE. ACCEPTED THE HARRISON AS THE CORNER LOCATION. SET 4 NEW TIES AND MEASURED TO THE EXISTING TIE.



LOCATION

(INDICATE CORNER BY "X")

SEAL:

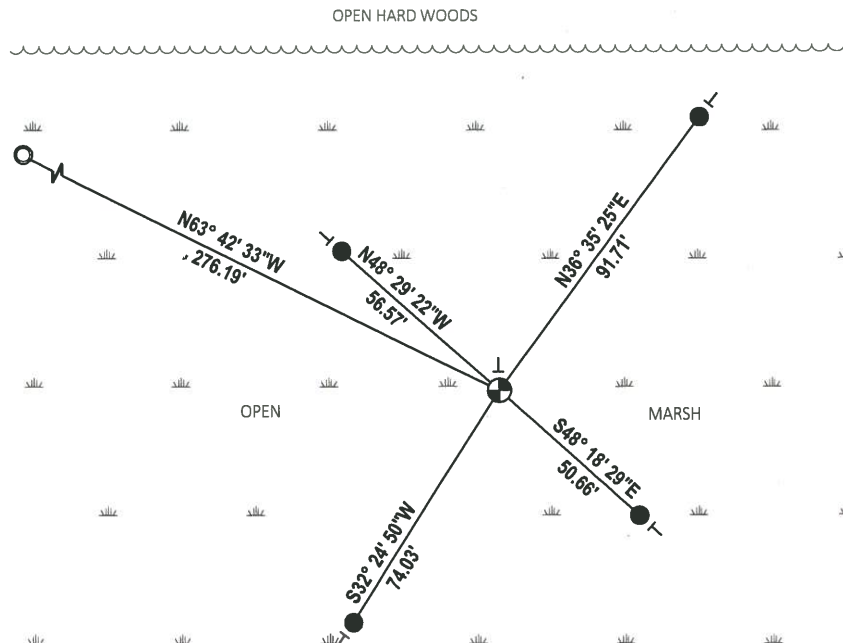
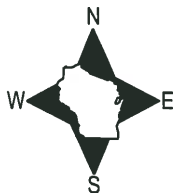


DATA SHOWN HERE ON THIS TIE SHEET IS CORRECT AND COMPLETE TO THE BEST OF MY KNOWLEDGE AND BELIEF.

PROFESSIONAL LAND SURVEYOR

DATE 3/9/2020

### - TIE SKETCH



- SET 3/4" x 18" IRON REBAR, 1.50#/FT
- FOUND 1-1/4" O.D. IRON PIPE
- ⊕ FOUND HARRISON MONUMENT
- | VINYL "T" POST

ADAMS COUNTY

Survey Monument Record

TYPE OF MONUMENT: Harrison Monument

STATE PLANE COORDINATES: N \_\_\_\_\_

E \_\_\_\_\_

ELEVATION — M.S.L. DATUM: \_\_\_\_\_

THETA ANGLE: \_\_\_\_\_

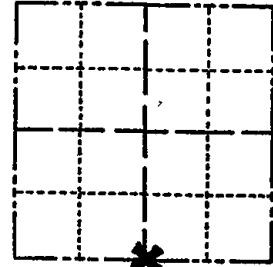
FIELD BOOK: \_\_\_\_\_ PAGE \_\_\_\_\_

CORNER NO. 1062

SECTION 21

TOWN 18

RANGE 7



LOCATION (Indicated by 'X')

SEAL:



BASIS FOR MONUMENT LOCATION

(Use reverse side if necessary)

Show info such as: History of corner, with reference to Vol. and pg, dates, surveyor; exact description of monument replaced; if location computed, by taped or EDM traverse; landowner remarks, etc.

Ran EDM/transit traverse around portions of Sections 21, 22 and 23 to determine search areas for investigation.

Found remains of post set by M.C. Smith, July 1, 1908 (Vol 1, Page 96) and verified by stump of bearing tree (16" Blk Oak, N64 1/2 W, 418 1/2 Links). Bearing tree to Northeast appearantly not by Smith.

Replaced post with Harrison Monument.

CORNER	O.K.	3-14-77	GR-SS
"	"	5-26-82	PK-SS
"	"	2-18-87	SS
"	"	12-2-91	JG-SS
"	"	4-21-97	JG-SS

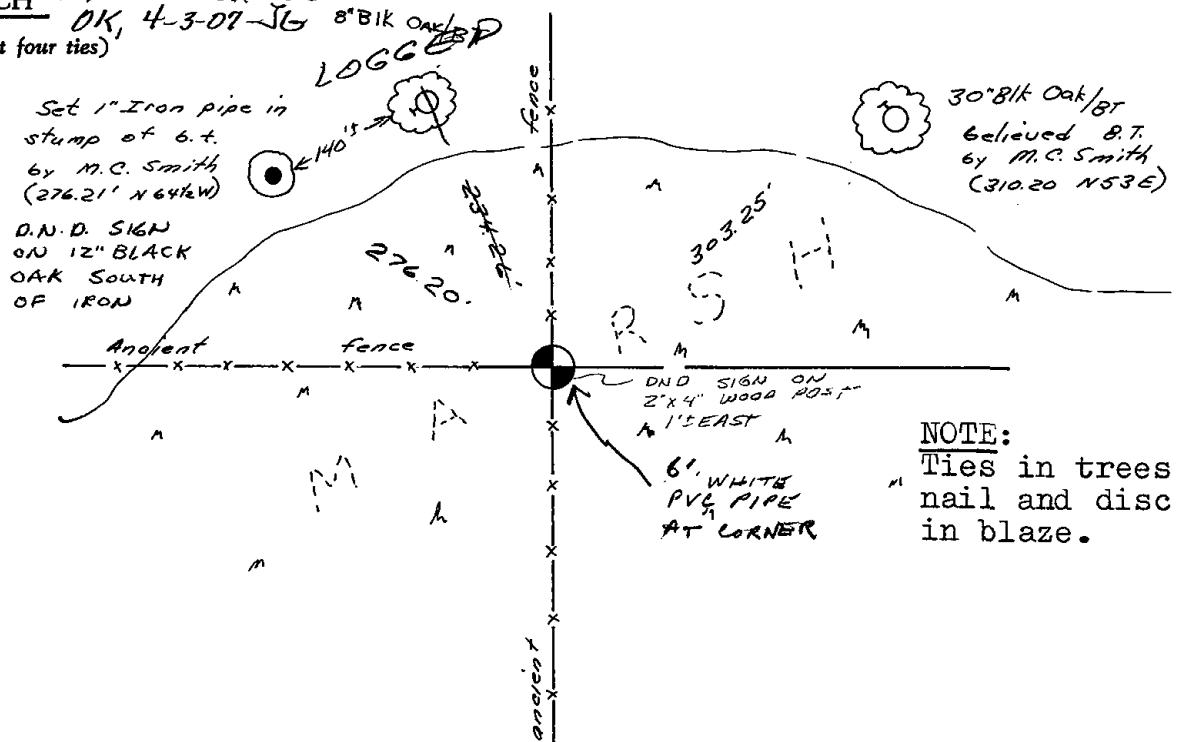
CERTIFIED CORRECT:

Dale C Hagen  
Registered Land Surveyor  
DATE: 9-21-76

TIE SKETCH OK 1-08-82-JG

2-29-12 SS PVC@MDN

OK, 4-3-07-JG 8" Blk Oak  
(Show at least four ties)



NOTE: Ties in trees to nail and disc in blaze.