

21 SECTION    18 TOWN    07 RANGE

# ADAMS COUNTY

COUNTY CORNER NO: 87  
 ROMPORTOL ID: 41807210000

## PUBLIC LAND SURVEY MONUMENT RECORD

TYPE OF MONUMENT: HARRISON  
 ADAMS COUNTY COORDINATES, NAD 83 (2007)

N. 235058.036

E. 572907.769

ELEVATION- - - - - DATUM - - - - -

FIELD WORK DATE: 01/16/2020

### BASIS FOR MONUMENT LOCATION

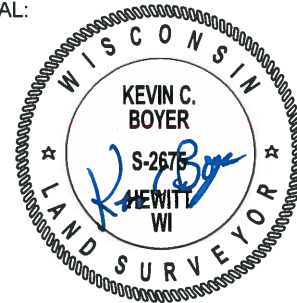
1976 - PLS RAN EDM/TRANSIT TRAVERSE AROUND SECTION 22 TO DETERMINE SEARCH AREAS FOR INVESTIGATION. EXCAVATION WITH BACKHOE YIELDED BOTTOM 6" OF 2-1/2" DIAMETER DRIVEN POST, AND NO OTHER EVIDENCE OF THE CORNER. REPLACED POST WITH HARRISON MONUMENT.

2020 - PLS 2675 FOUND HARRISON MONUMENT 6"± BELOW THE ROAD SURFACE AND 2 WITNESSES. THE MONUMENT AGREES WITH BOTH WITNESSES. ACCEPTED THE HARRISON MONUMENT AS THE CORNER LOCATION. SET 4 NEW TIES AND MEASURED THE TO THE EXISTING WITNESSES.



**LOCATION**  
 (INDICATE CORNER BY "X")

SEAL:



DATA SHOWN HERE ON THIS TIE SHEET IS CORRECT AND COMPLETE TO THE BEST OF MY KNOWLEDGE AND BELIEF.

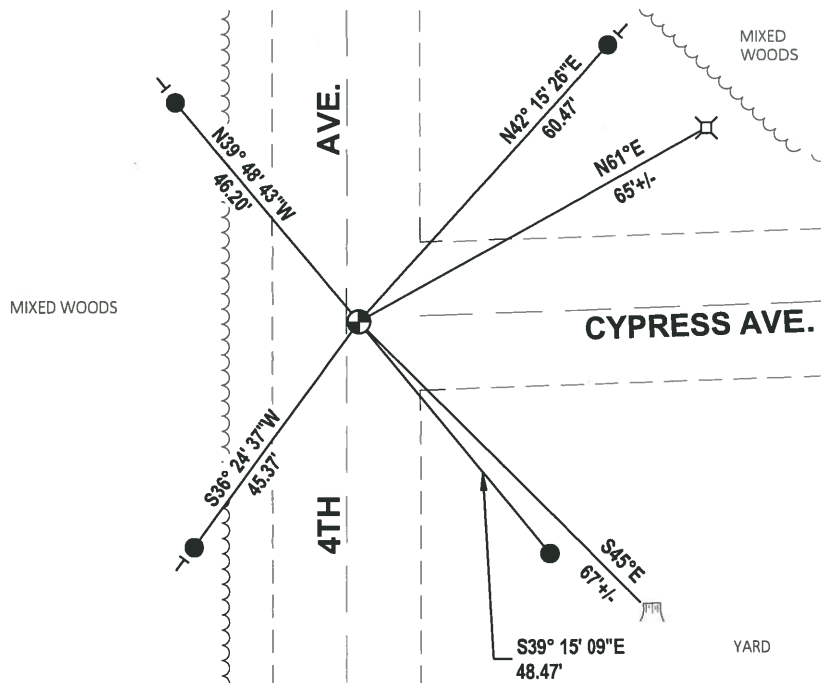
PROFESSIONAL LAND SURVEYOR

DATE 3/9/2020

### - TIE SKETCH

NOTE1: THE CORNER LANDS 2± EAST OF 4TH AVE. CENTERLINE

NOTE2: THE TIE IN SE QUADRANT IS SET 12" BELOW THE GROUND SURFACE.



- SET 3/4" x 18" IRON REBAR, 1.50#/FT
- ⊕ FOUND HARRISON MONUMENT
- ⊗ SW CORNER OF TEL. PED.
- ┌ VINYL "T" POST
- ▭ WITNESS STUMP

ADAMS COUNTY

Survey Monument Record

TYPE OF MONUMENT: Harrison

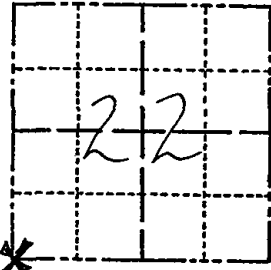
STATE PLANE COORDINATES: N \_\_\_\_\_  
E \_\_\_\_\_

ELEVATION — M.S.L. DATUM: \_\_\_\_\_

THETA ANGLE: \_\_\_\_\_

FIELD BOOK: 41 PAGE 20

CORNER NO. 87  
1088  
SECTION 22  
TOWN 18  
RANGE 7



BASIS FOR MONUMENT LOCATION

(Use reverse side if necessary)

Show info such as: History of corner, with reference to Vol. and pg, dates, surveyor; exact description of monument replaced; if location computed, by taped or EDM traverse; landowner remarks, etc.

Ran EDM/Transit traverse around Section 22 to determine search areas for investigation.

Excavation with backhoe yielded bottom 6" of 2 1/2" diameter driven post, and no other evidence of the corner.

Replaced post with Harrison Monument of 5-20-76.



SEAL:

LOCATION (Indicated by 'X')

CORNER O.K. 3-14-77 GR-SS  
" " 8-17-82 PK-SS  
" " 2-18-87 SS

CORNER OK 1-NEW, 1-GONE KZ-JG 11-22-91

CORNER OK 2-17-97 JG-SS  
1-GONE, 1-NEW 1-08-02 JG

CERTIFIED CORRECT:

Anthony B. Kiedrowski  
Registered Land Surveyor

DATE: 9-21-76

TIE SKETCH OK, 3-23-07; JG-SS

(Show at least four ties)

NOTE

Ties in trees to nail and disc in blaze.

