

22
SECTION

18
TOWN

07
RANGE

ADAMS COUNTY

COUNTY CORNER NO: 89
ROMPORTOL ID: 41807220000

PUBLIC LAND SURVEY MONUMENT RECORD

TYPE OF MONUMENT: HARRISON
ADAMS COUNTY COORDINATES, NAD 83 (2007)

N. 235103.972

E. 578189.852

ELEVATION- - - - DATUM - - - -

FIELD WORK DATE: 02/05/2020

BASIS FOR MONUMENT LOCATION

1981 - PLS 878 STONE CALLED FOR BY M.C. SMITH, VOL. 1, PG. 48 COUNTY SURVEY RECORDS. EXCAVATED WITH BACKHOE AND FOUND BROKEN 5"X6"X13" DUG IN SANDSTONE. LOWERED STONE AND SET A HARRISON MONUMENT ON TOP.

2020 - PLS 2675 FOUND HARRISON MONUMENT 2"± BELOW THE ROAD SURFACE AND 2 WITNESSES. THE MONUMENT AGREES WITH BOTH WITNESSES. ACCEPTED THE HARRISON AS THE CORNER LOCATION. SET 4 NEW TIES AND MEASURED TO THE EXISTING WITNESSES.



LOCATION

(INDICATE CORNER BY "X")

SEAL:



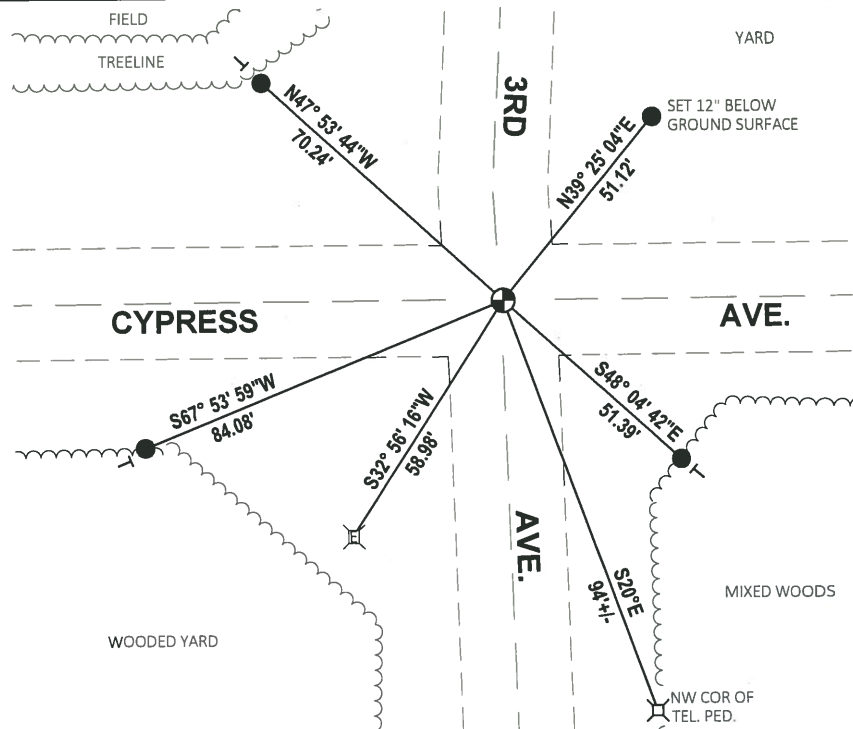
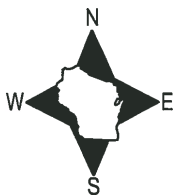
DATA SHOWN HERE ON THIS TIE SHEET IS CORRECT AND COMPLETE TO THE BEST OF MY KNOWLEDGE AND BELIEF.

PROFESSIONAL LAND SURVEYOR

DATE 3/9/2020

- TIE SKETCH

NOTE: THE CORNER LANDS 0.7'± EAST OF 3RD AVE. CENTERLINE

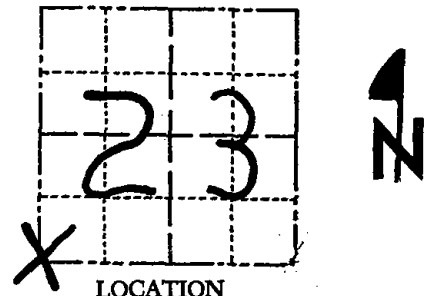


- SET 3/4" x 18" IRON REBAR, 1.50#/FT
- ⊕ FOUND HARRISON MONUMENT
- VINYL "T" POST
- ⊗ "X" ON ELEC. BOX CONCRETE PAD

Government Land Corner Certificate

Adams County
 TYPE OF MONUMENT: Harrison
 STATE PLANE COORDINATES: N _____
 E _____
 ELEVATION — M.S.L. DATUM: _____
 THETA ANGLE: _____
 FIELD BOOK: 76 (102) PAGE 115 (113)
 DRAWN BY: T. Helgren

CORNER NO. 89
 SECTION 23
 TOWN 18
 RANGE 7



BASIS FOR MONUMENT LOCATION

Show info such as: History of corner, with reference to Vol. and pg., dates, surveyor; exact description of monument replaced; if location computed, by taped or EDM traverse; landowner remarks, etc. (Use reverse side if necessary)

Stone called for by M.C. Smith, Vol 1, pg 105,
 County survey records. Ex cavated with backhoe and found
 broken 5 x 6 x 13" dug in sandstone. Lowered stone and
 set a Harrison monument on top.

SEAL:



DATA SHOWN HERE ON
 CERTIFIED CORRECT:

Anthony B. Kiedrowski
 Registered Land Surveyor

DATE: 9/23/81

TIE SKETCH

Show at least four ties, also fence lines, roads, topo, size and type of witness trees' and if off road - best way to arrive at corner.

Ties to
 20p. Spk.

