

PUBLIC LAND SURVEY MONUMENT RECORD

TYPE OF MONUMENT: HARRISON
 ADAMS COUNTY COORDINATES, NAD 83 (2007)

N. 235075.332

E. 580824.552

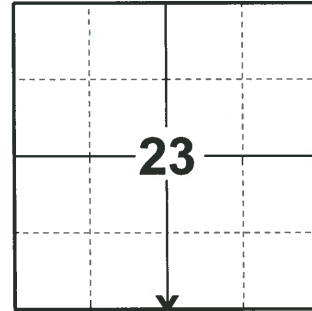
ELEVATION- - - DATUM - -

FIELD WORK DATE: 02/05/2020

BASIS FOR MONUMENT LOCATION

1981 - PLS 878 NO RESURVEYS OF RECORD. EXCAVATED WITH BACKHOE AND FOUND A VERY RUSTY 3/8"x1-1/4"x20" FLAT IRON BAR DOWN 12". NO OTHER MARK. REPLACED IRON FOUND WITH A HARRISON MONUMENT.

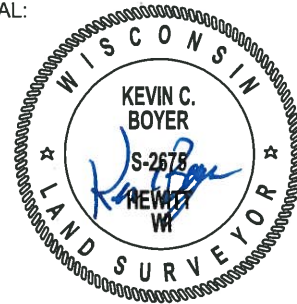
2020 - PLS 2675 FOUND HARRISON MONUMENT 2"± BELOW THE ROAD SURFACE, 1 TIE, AND 1 WITNESS. THE MONUMENT AGREES WITH THE TIE AND WITNESS. ACCEPTED THE HARRISON AS THE CORNER LOCATION. SET 3 NEW TIES AND MEASURED TO THE EXISTING TIE AND WITNESS.



LOCATION

(INDICATE CORNER BY "X")

SEAL:



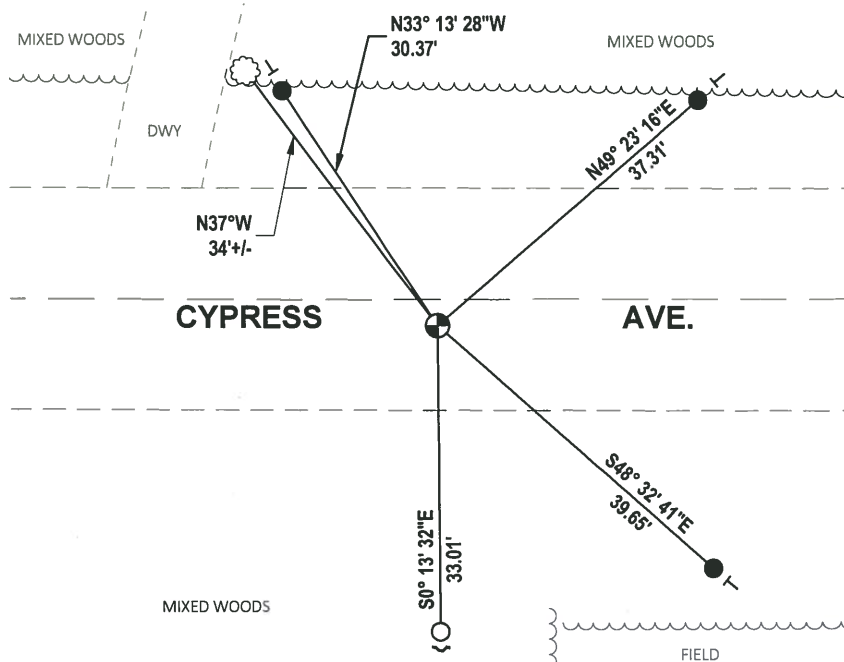
DATA SHOWN HERE ON THIS TIE SHEET IS CORRECT AND COMPLETE TO THE BEST OF MY KNOWLEDGE AND BELIEF.

PROFESSIONAL LAND SURVEYOR

DATE 3/9/2020

TIE SKETCH

NOTE: THE CORNER LANDS 3'± SOUTH OF CENTERLINE OF CYPRESS AVE.

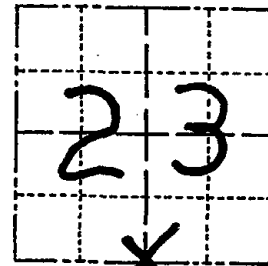


- SET 3/4" x 18" IRON REBAR, 1.50#/FT
- FOUND 3/4" IRON ROD
- ⊕ FOUND HARRISON MONUMENT
- ⌋ STEEL FENCE POST
- ⊥ VINYL "T" POST
- ☁ WITNESS TREE

Government Land Corner Certificate

Adams County
 TYPE OF MONUMENT: Harrison
 STATE PLANE COORDINATES: N _____
 E _____
 ELEVATION — M.S.L. DATUM: _____
 THETA ANGLE: _____
 FIELD BOOK: 76 (202) PAGE 114 (113)
 DRAWN BY: T. Helgren

CORNER NO. 90
 SECTION 23
 TOWN 18
 RANGE 7



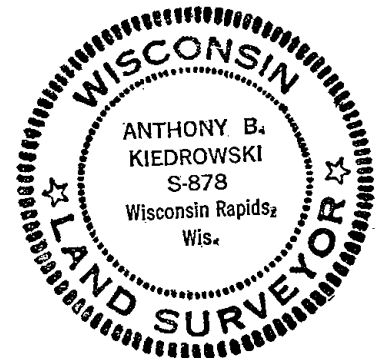
LOCATION
(Indicated by 'X')

BASIS FOR MONUMENT LOCATION

Show info such as: History of corner, with reference to Vol. and pg., dates, surveyor; exact description of monument replaced; if location computed, by taped or EDM traverse; landowner remarks, etc. (Use reverse side if necessary)

No resurveys of record. Excavated with backhoe and found a very rusty 3/8" x 1 1/4" x 20" flat iron bar down 12". No other mark. Replaced iron found with a Harrison monument.

SEAL:



DATA SHOWN HERE ON
CERTIFIED CORRECT:

Anthony B. Kiedrowski
Registered Land Surveyor

DATE: 9/23/81

TIE SKETCH

Show at least four ties, also fence lines, roads, topo, size and type of witness trees' and if off road - best way to arrive at corner.

All Ties to
20p. spk.

