

PUBLIC LAND SURVEY MONUMENT RECORD

TYPE OF MONUMENT: HARRISON
 ADAMS COUNTY COORDINATES, NAD 83 (2007)

N. 235166.266

E. 586111.626

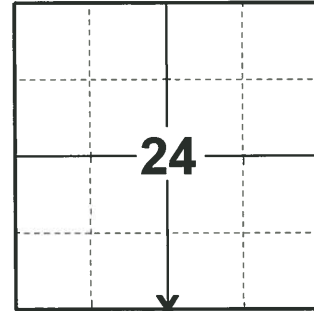
ELEVATION- _____ DATUM _____

FIELD WORK DATE: 01/23/2020

BASIS FOR MONUMENT LOCATION

1981 - PLS 878 NO RESURVEYS OF RECORD. EXCAVATED WITH BACKHOE IN CENTER OF ROAD OPPOSITE FENCE LINE, FOUND NOTHING. CORNER IS SET ON LINE AND EQUIDISTANT BETWEEN SECTION CORNERS. ALTHOUGH THIS FALLS OFF THE ROAD, THE LOCATION APPEARS TO BE CORRECT SINCE THE CORNER HALF MILE WEST OF HERE ALSO FALLS ABOUT 35' NORTH OF THE ROAD. THE ROAD TO THE EAST MAKES A JOG BEFORE IT GETS TO THE NE CORNER OF SECTION 25.

2020 - PLS 2675 FOUND HARRISON MONUMENT FLUSH WITH THE GROUND SURFACE, 1 TIE, AND 2 WITNESSES. THE MONUMENT AGREES WITH THE TIE AND WITNESSES. ACCEPTED THE HARRISON MONUMENT AS THE CORNER LOCATION. SET 3 NEW TIES AND MEASURED TO THE EXISTING TIE AND WITNESSES.



LOCATION
 (INDICATE CORNER BY "X")

SEAL:



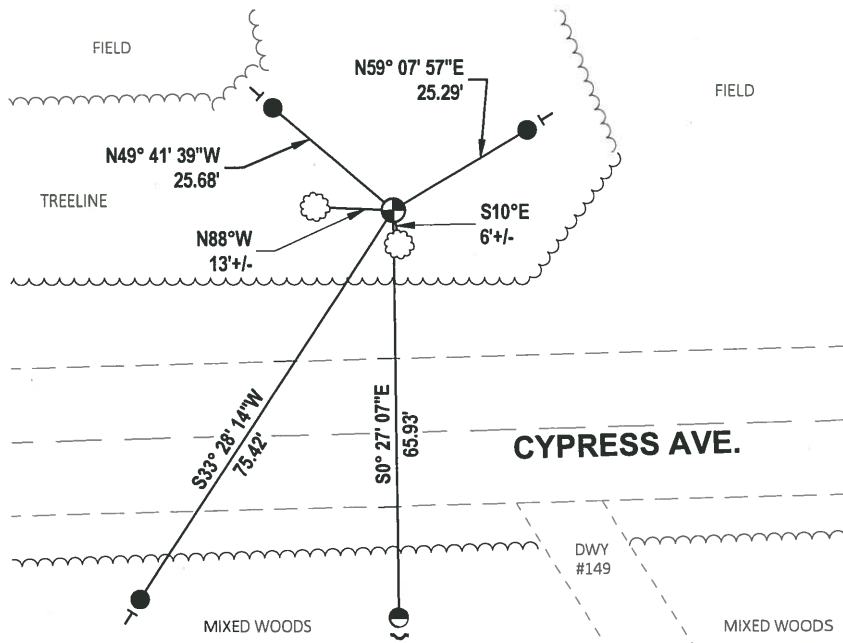
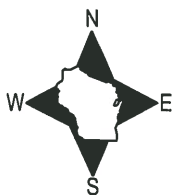
DATA SHOWN HERE ON THIS TIE SHEET IS CORRECT AND COMPLETE TO THE BEST OF MY KNOWLEDGE AND BELIEF.

PROFESSIONAL LAND SURVEYOR

DATE 3/9/2020

TIE SKETCH

NOTE: THE CORNER LANDS 36± NORTH OF CENTERLINE OF CYPRESS AVE.

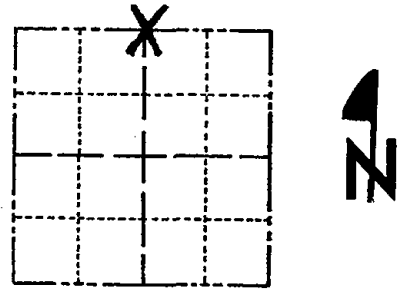


- SET 3/4" x 18" IRON REBAR, 1.50#/FT
- FOUND 7/8" IRON ROD
- FOUND HARRISON MONUMENT
- ~ STEEL FENCE POST
- VINYL "T" POST
- ☼ WITNESS TREE

Government Land Corner Certificate

ADAMS County
 TYPE OF MONUMENT: HARRISON MONUMENT
 STATE PLANE COORDINATES: N _____
 E _____
 ELEVATION — M.S.L. DATUM: _____
 THETA ANGLE: _____
 FIELD BOOK: 88 PAGE 96
 DRAWN BY: R. T. WELCH

CORNER NO. 92
 SECTION 25
 TOWN 18
 RANGE 7



LOCATION
(Indicated by 'X')

BASIS FOR MONUMENT LOCATION

Show info such as: History of corner, with reference to Vol. and pg., dates, surveyor; exact description of monument replaced; if location computed, by taped or EDM traverse; landowner remarks, etc. (Use reverse side if necessary)

No resurveys of record. Excavated with backhoe in center of road opposite fence line, found nothing. Corner is set on line and equidistant between Section corners. Although this falls off the road, the location appears to be correct since the corner half mile West of here also falls about 35' North of the road. The road to the East makes a jog before it gets to the NE corner of Section 25.

SEAL:



DATA SHOWN HERE ON CERTIFIED CORRECT:

Anthony B. Kiedrowski
Registered Land Surveyor

DATE: 12/2/81

TIE SKETCH

Show at least four ties, also fence lines, roads, topo, size and type of witness trees and if off road - best way to arrive at corner.

