

PUBLIC LAND SURVEY MONUMENT RECORD

TYPE OF MONUMENT: 2-3/8" O.D. IRON PIPE
 ADAMS COUNTY COORDINATES, NAD 83 (2007)

N. 232430.496

E. 562341.494

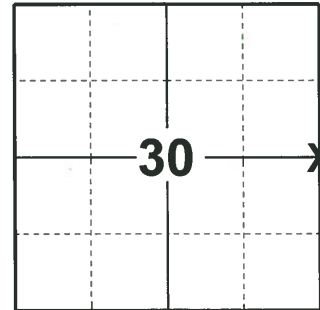
ELEVATION- _____ DATUM _____

FIELD WORK DATE: 01/13/2020

BASIS FOR MONUMENT LOCATION

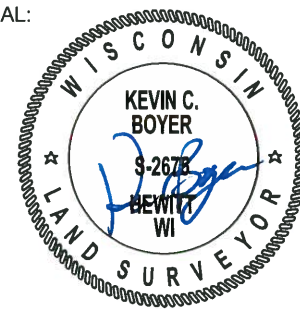
1983 - PLS 1551 SEARCHED CORNER AREA FOR TRACES OF ORIGINAL CORNER, NOTHING WAS FOUND. NOTHING OF THE ORIGINAL OR SUBSEQUENT BEARING TREES AS MENTIONED IN THE OLD CORNER TIES BOOK WAS FOUND. CORNER WAS RESET ON THE EXTENSION OF AN OLD FENCE LINE RUNNING ALONG MOST OF THE WEST LINE OF THE SW 1/4. PRORATION BETWEEN ADJACENT SECTION CORNERS WAS USED FOR N-S POSITIONING. THIS LOCATION AGREES WITH POSSIBLE TRACES OF AN OLD E-W DITCH AT THE CORNER, AND DOUBLES EXACTLY THROUGH AN OLD E-W FENCE LINE FOUND AT THE 1/16 CORNER TO THE NORTH.

2020 - PLS 2675 FOUND 2-3/8" O.D. IRON PIPE 18"± ABOVE THE MARSH SURFACE AND 3 TIES. THE MONUMENT AGREES WITH ALL 3 TIES. ACCEPTED THE 2-3/8" O.D. IRON PIPE AS THE CORNER LOCATION. SET 1 NEW TIE AND MEASURED TO THE EXISTING TIES.



LOCATION
 (INDICATE CORNER BY "X")

SEAL:

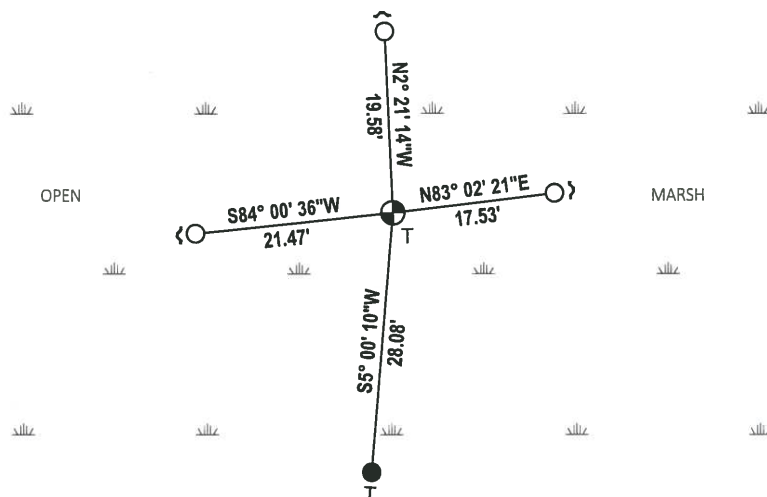


DATA SHOWN HERE ON THIS TIE SHEET IS CORRECT AND COMPLETE TO THE BEST OF MY KNOWLEDGE AND BELIEF.

PROFESSIONAL LAND SURVEYOR

DATE 3/9/2020

TIE SKETCH



- SET 3/4" x 18" IRON REBAR, 1.50#/FT
- FOUND 3/4" IRON ROD
- ⊕ FOUND 2-3/8" O.D. IRON PIPE MONUMENT
- ↙ STEEL FENCE POST
- └ VINYL "T" POST

U.S. PUBLIC LAND SURVEY MONUMENT RECORD

ADAMS COUNTY

TYPE OF MONUMENT: 2" I.D. x 60" galvanized pipe

STATE PLANE COORDINATES: N _____
E _____

ELEVATION — M.S.L. DATUM: _____

THETA ANGLE: _____

FIELD BOOK: 1 PAGE 9

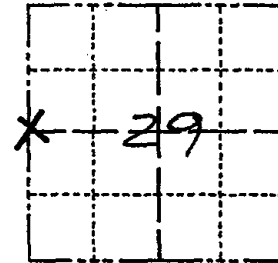
DRAWN BY: D. Riesop

CORNER NO. 95

SECTION 29

TOWN 18N

RANGE 7E



LOCATION
(Indicated by 'X')



SEAL:



BASIS FOR MONUMENT LOCATION

Show info such as: History of corner, with reference to Vol. and pg., dates, surveyor; exact description of monument replaced; if location computed, by taped or EDM traverse; landowner remarks, etc. (Use reverse side if necessary)
(in conformance with Section A-E 502 of the Wisconsin Administrative Code)

Searched corner area for traces of original corner, nothing was found. Nothing of the original or subsequent bearing trees as mentioned in the old corner ties book was found.

Corner was reset on the extension of an old fence line along most of the West line of the SW 1/4. Proration between adjacent section corners was used for N-S positioning.

This location agrees with possible traces of an old E-W ditch at the corner, and doubles exactly through an old E-W fence line found at the 1/16 th corner to the North.

DATA SHOWN HERE ON CERTIFIED CORRECT:

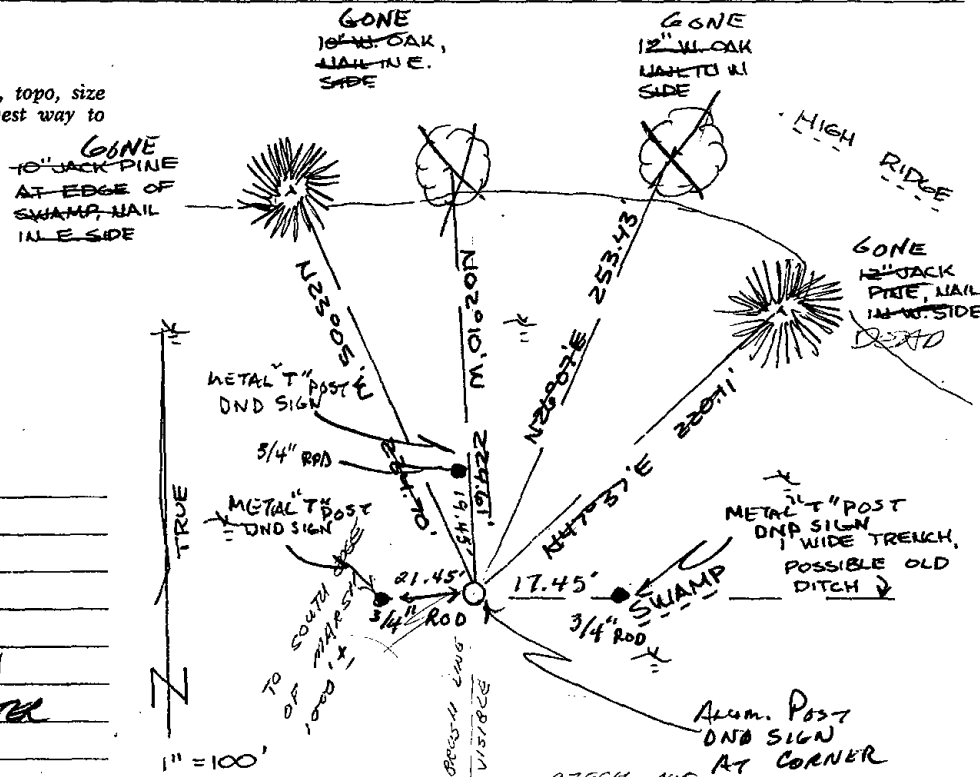
David C. Riesop
Registered Land Surveyor

DATE: 11/2/83

TIE SKETCH

Show at least four ties, also fence lines, roads, topo, size and type of witness trees and if off road - best way to arrive at corner.

STEEL POST/NO TRESPASS SIGN @ COR.



MAINTENANCE RECORD

Date	Init.	Remarks
2-10-87	SS	OK
12-4-91	KZ-JG	OK
4-21-97	JG-SS	OK
1-08-02	JG	4-GONE, 3-NEW
4-3-07	JG	OK, HIGH WATER

1" = 100'

CZECH AVE.

