

26
SECTION

18
TOWN

07
RANGE

ADAMS COUNTY

COUNTY CORNER NO: 99
ROMPORTOL ID: 41807262000

PUBLIC LAND SURVEY MONUMENT RECORD

TYPE OF MONUMENT: HARRISON
ADAMS COUNTY COORDINATES, NAD 83 (2007)

N. 232480.679

E. 583480.116

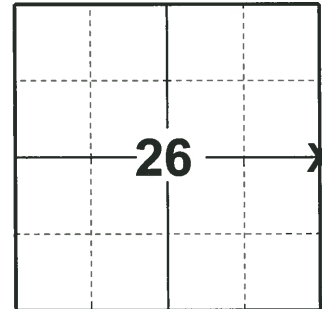
ELEVATION- - - - DATUM - - - -

FIELD WORK DATE: 02/06/2020

BASIS FOR MONUMENT LOCATION

1981 - PLS 878 NO RECORD OF RESURVEYS. EXCAVATED WITH BACKHOE, FOUND NOTHING. THIS CORNER SET ON LINE AND EQUIDISTANT BETWEEN SECTION CORNERS.

2020 - PLS 2675 FOUND HARRISON MONUMENT 6"± BELOW THE ROAD SURFACE AND 2 WITNESSES. THE MONUMENT AGREES WITH BOTH WITNESSES. ACCEPTED THE HARRISON AS THE CORNER LOCATION. SET 4 NEW TIES AND MEASURED TO THE EXISTING WITNESSES.



LOCATION
(INDICATE CORNER BY "X")

SEAL:



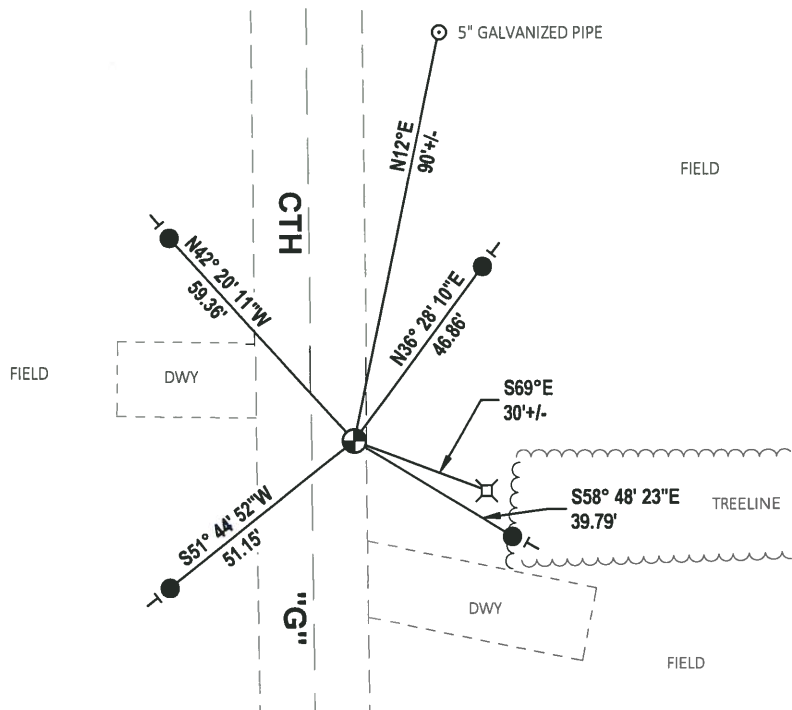
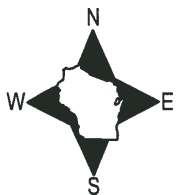
DATA SHOWN HERE ON THIS TIE SHEET IS CORRECT AND COMPLETE TO THE BEST OF MY KNOWLEDGE AND BELIEF.

PROFESSIONAL LAND SURVEYOR

DATE 3/9/2020

- TIE SKETCH

NOTE: THE CORNER LANDS 9'± EAST OF THE CENTERLINE OF CTH "G"

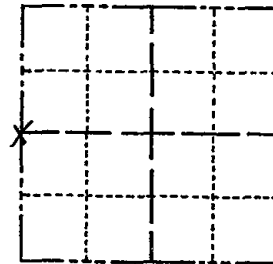


- SET 3/4" x 18" IRON REBAR, 1.50#/FT
- ⊕ FOUND HARRISON MONUMENT
- ⌘ NW CORNER OF ELEC. PED.
- VINYL "T" POST

Government Land Corner Certificate

ADAMS County
 TYPE OF MONUMENT: HARRISON
 STATE PLANE COORDINATES: N _____
 E _____
 ELEVATION — M.S.L. DATUM: _____
 THETA ANGLE: _____
 FIELD BOOK: 88 PAGE 68
 DRAWN BY: L.C.

CORNER NO. 99
 SECTION 25
 TOWN 18
 RANGE 7



LOCATION
(Indicated by 'X')

BASIS FOR MONUMENT LOCATION

Show info such as: History of corner, with reference to Vol. and pg., dates, surveyor; exact description of monument replaced; if location computed, by taped or EDM traverse; landowner remarks, etc. (Use reverse side if necessary)

No record of resurveys.
 Excavated with backhoe, found nothing.
 This corner set on line and equidistant
 between Section corners.

SEE REVERSE

SEAL:



DATA SHOWN HERE ON
CERTIFIED CORRECT:

Anthony B. Kiedrowski
Registered Land Surveyor

DATE: 10/7/81

TIE SKETCH

Show at least four ties, also fence lines, roads, topo, size and type of witness trees and if off road - best way to arrive at corner.

