

SECTION 25 TOWN 18 RANGE 07

ADAMS COUNTY

COUNTY CORNER NO: 100
 ROMPORTOL ID: 41807252000

PUBLIC LAND SURVEY MONUMENT RECORD

TYPE OF MONUMENT: HARRISON
 ADAMS COUNTY COORDINATES, NAD 83 (2007)

N. 232561.936

E. 588782.561

ELEVATION- --- DATUM ---

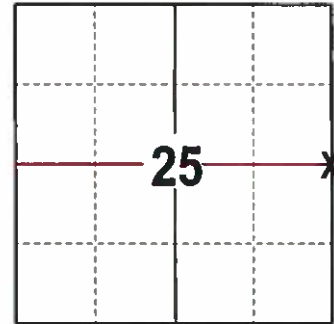
FIELD WORK DATE: 1/11/2017

BASIS FOR MONUMENT LOCATION

1981 - PLS 1118 EXCAVATED AND FOUND NOTHING. MONUMENT WAS SET ON A STRAIGHT LINE BETWEEN THE NW AND SW CORNERS AT FENCE LINE TO WEST. SET A HARRISON.

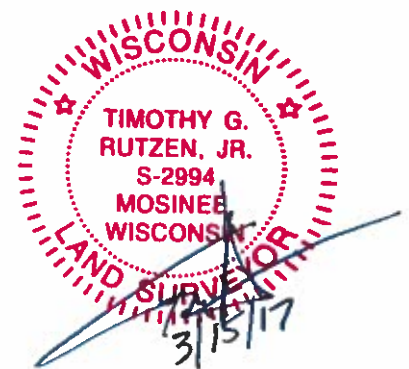
1988 - PLS 1118 FOUND A HARRISON AND 2 EXISTING TIES. SET 1 NEW TIE.

2017 - PLS 2994 FOUND A HARRISON 6 INCHES BELOW THE ROAD SURFACE AND 1 EXISTING TIE. THE HARRISON AGREES WITH EXISTING TIE. ACCEPTED HARRISON AND SET 4 NEW TIES.



LOCATION
 (INDICATE CORNER BY "X")

SEAL:



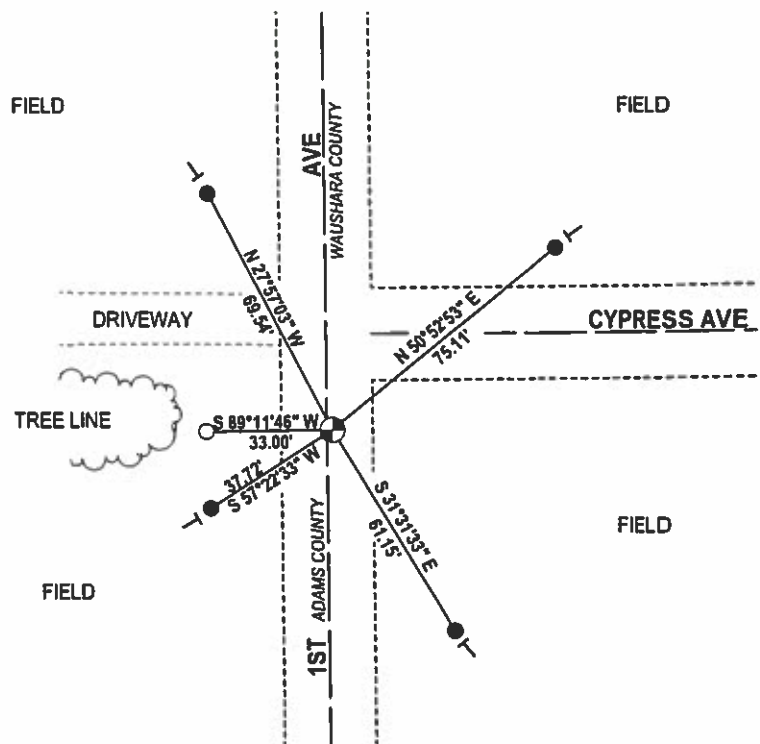
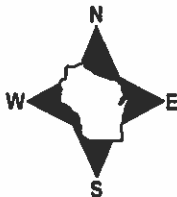
DATA SHOWN HERE ON THIS TIE SHEET IS CORRECT AND COMPLETE TO THE BEST OF MY KNOWLEDGE AND BELIEF.

PROFESSIONAL LAND SURVEYOR

DATE 3/15/17

- TIE SKETCH

NOTE: THE CORNER FALLS 1'± EAST OF THE CENTERLINE OF 1ST AVE AND 25'± SOUTH OF THE CENTERLINE OF CYPRESS AVE.



- 3/4" x 18" IRON REBAR SET, 1.50#/FT
- 3/4" IRON ROD FOUND
- ⊕ HARRISON FOUND
- VINYL "T" POST

Government Land Corner Certificate

ADAMS County

TYPE OF MONUMENT: _____

STATE PLANE COORDINATES: N _____
E _____

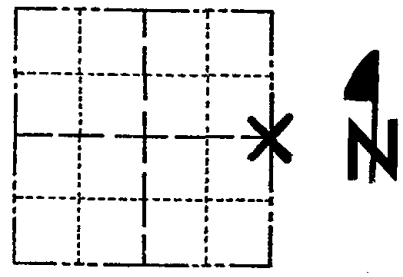
ELEVATION — M.S.L. DATUM: _____

THETA ANGLE: _____

FIELD BOOK: _____ PAGE _____

DRAWN BY: S.J. Haumschild

CORNER NO. 100
SECTION 25
TOWN 18
RANGE 7



LOCATION
(Indicated by 'X')

BASIS FOR MONUMENT LOCATION

Show info such as: History of corner, with reference to Vol. and pg., dates, surveyor; exact description of monument replaced; if location computed, by taped or EDM traverse; landowner remarks, etc. (Use reverse side if necessary)

SEAL:

DATA SHOWN HERE ON
CERTIFIED CORRECT:

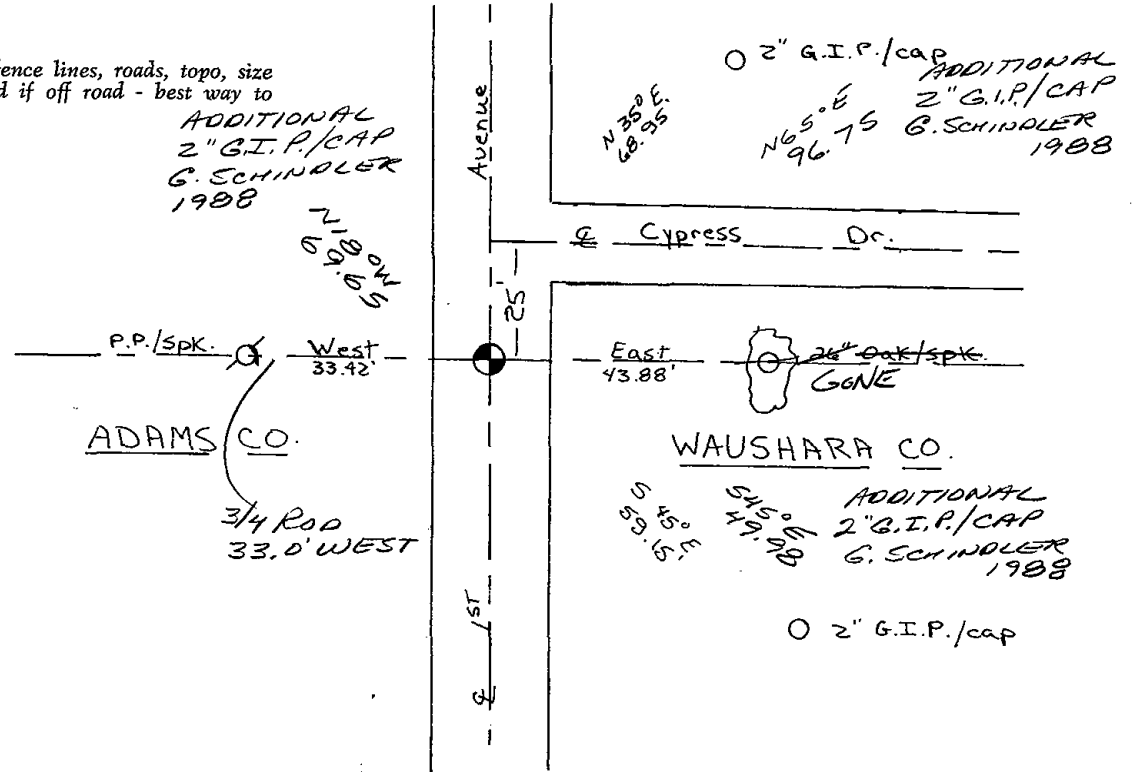
Registered Land Surveyor

DATE: _____

OK 2-20-97 SS
1-GONE, NO TIES AVAILABLE KE-SG 12-4-91
2-17-97 OK JG-SS
1-14-02 OK JG
4-3-07 - OK-JG
02-28-12 OK MS

TIE SKETCH

Show at least four ties, also fence lines, roads, topo, size and type of witness trees' and if off road - best way to arrive at corner.



STATE OF WISCONSIN
WAUSHARA COUNTY

WAUSHARA COUNTY
CERTIFIED LAND CORNER

2-100
100
7

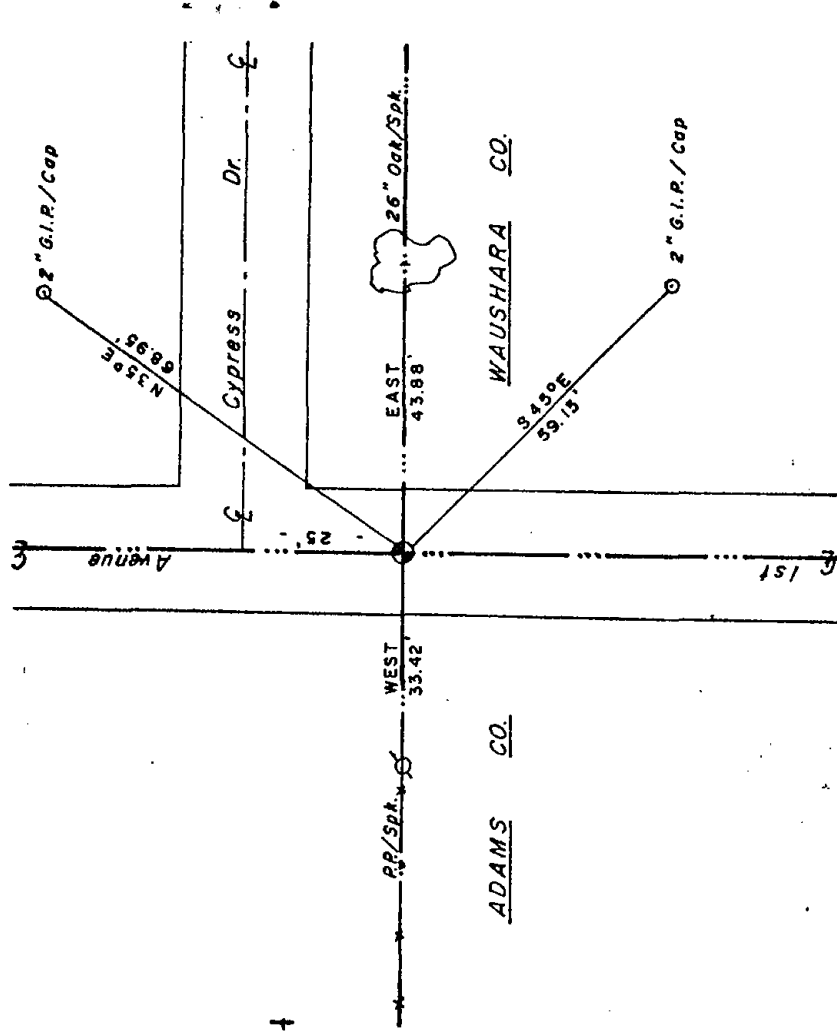
I, Gary E. Schindler, do hereby certify that on the 15th day of Oct 1981, I found (evidence) (no evidence) of the W1/4 corner of See 30, T18 N, R2 E, Fourth Principal Meridian, and I re-established said corner according to the Wisconsin Statutes as shown and described hereon.

Dated this 19th day of Oct 1981.

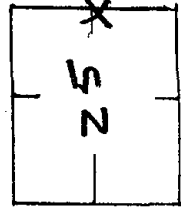
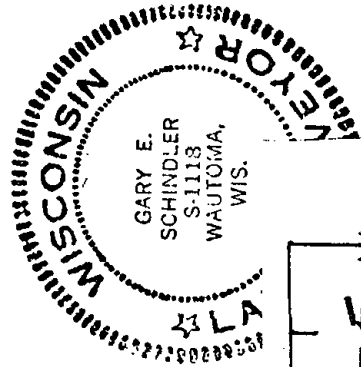
Gary E. Schindler
Waushara County Surveyor

Excavation turned up no evidence of previous monumentation. Monument was set on a straight line between the NW and SW corners at fence line to west

Description of corner evidence found: Road to and fence to west



100
25
18
7

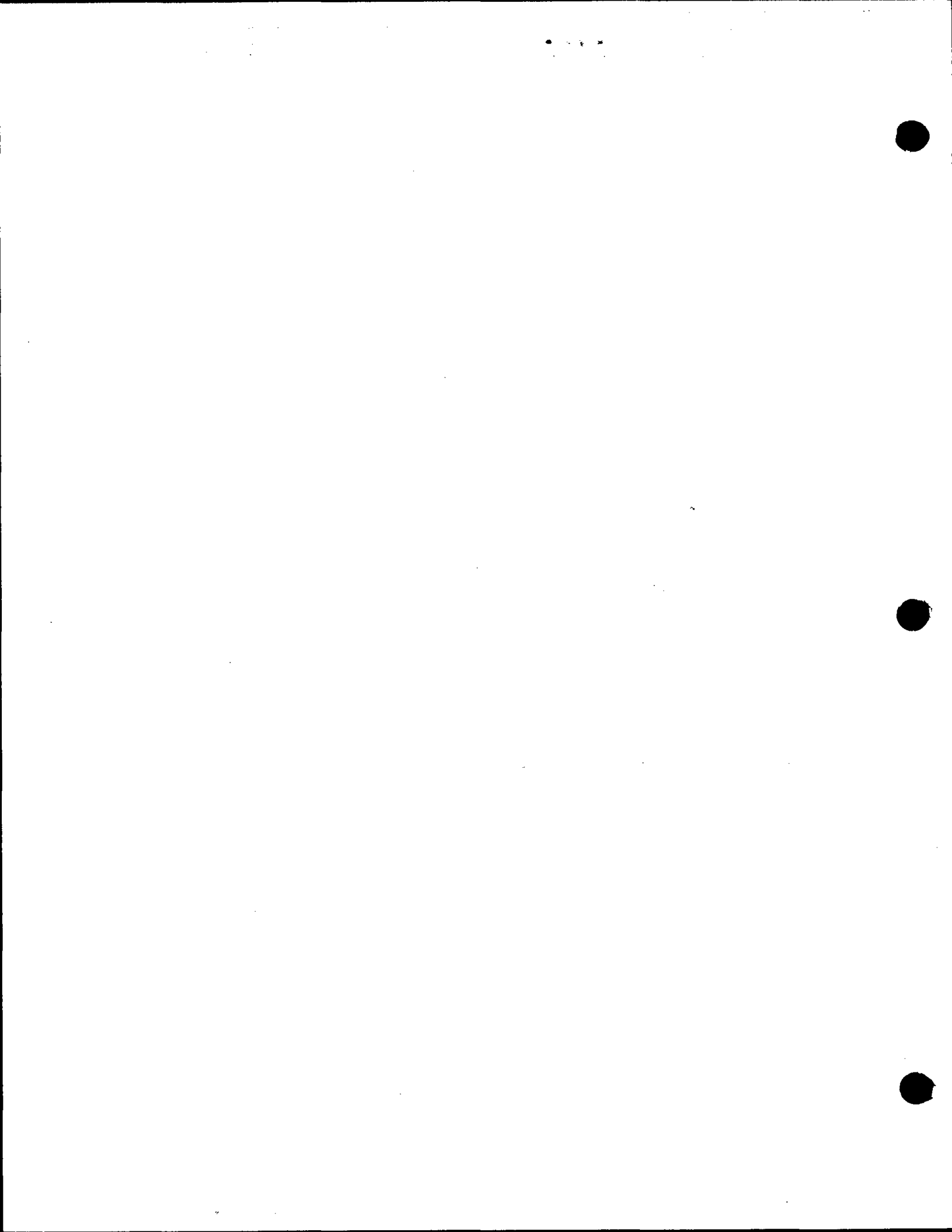


SEE SECTION FILES FOR ORIGINAL COPY.

WISCONSIN COORDINATE SYSTEM		
East (X)	North (Y)	Elevation (Z)
		Zone

Approved By:

Control Sta. Name:



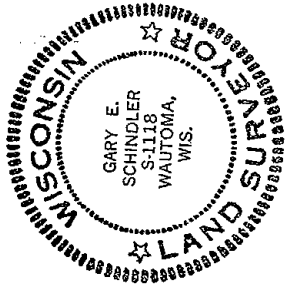
STATE OF WISCONSIN)
WAUSHARA COUNTY) SS

I, Gary E. Schindler, do hereby certify that on the 16th day of June, 1988, I found (evidence) (no evidence) of the W114 corner of Section 30, T18 N, R8 E, Fourth Principal Meridian, and I re-established said corner according to the Wisconsin Statutes as shown and described hereon.

Dated this 16th day of June, 1988

Gary E. Schindler
Waushara County Surveyor.

Procedure: Set additional ties



SEE BACK OF PAGE FOR
MAINTENANCE RECORDS

WAUSHARA COUNTY
CERTIFIED LAND CORNER

Description of corner evidence found:

MOVEMENT AND TIES AS PER SCHINDLER
TIE SHEET OF 19/10/81

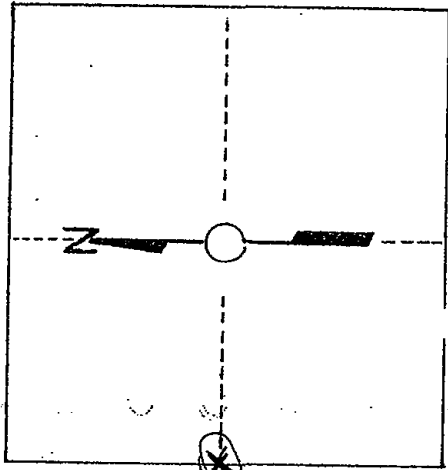
No. 94

Witnesses to corner location:

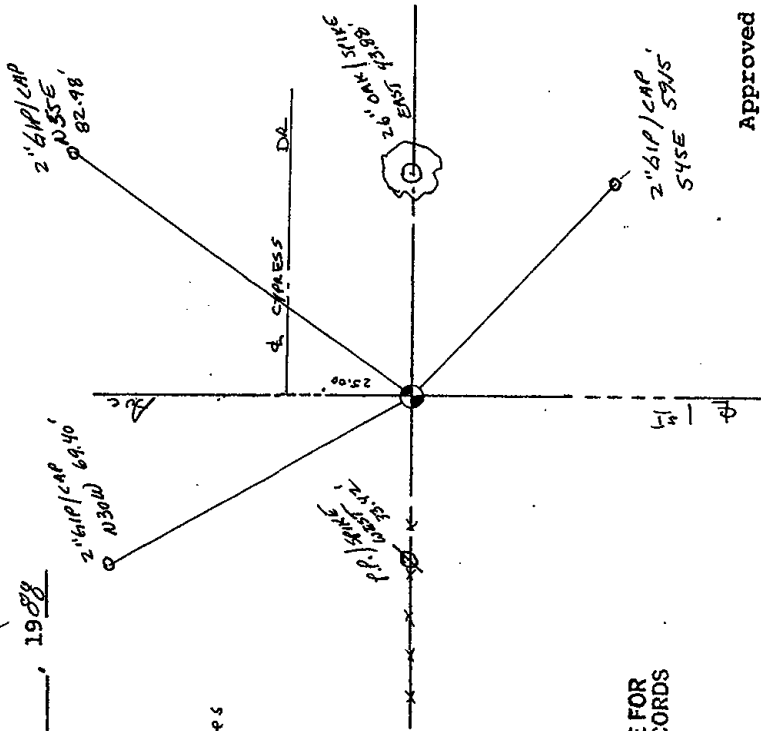
DAN ENTENGER

SCOTT SCHINDLER

Section 30



T. 18 N R 8 E
WISCONSIN



Approved By: _____

STATE OF WISCONSIN
WAUSHARA COUNTY

I, Gary E. Schindler, do hereby certify that on the 15th day of Oct 1981, I found (evidence) (no evidence) of the W1/4 corner of Sec 30, T 18 N; R 8 E, Fourth Principal Meridian, and I re-established said corner according to the Wisconsin Statutes as shown and described hereon.

Dated this 19th day of Oct 1981.

Gary E. Schindler
Waushara County Surveyor

Excavation turned up no evidence of previous monumentation. Monument was set on a straight line between the NW and SW corners at fence line to west

WAUSHARA COUNTY
CERTIFIED LAND CORNER

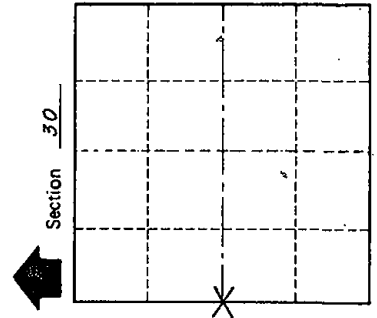
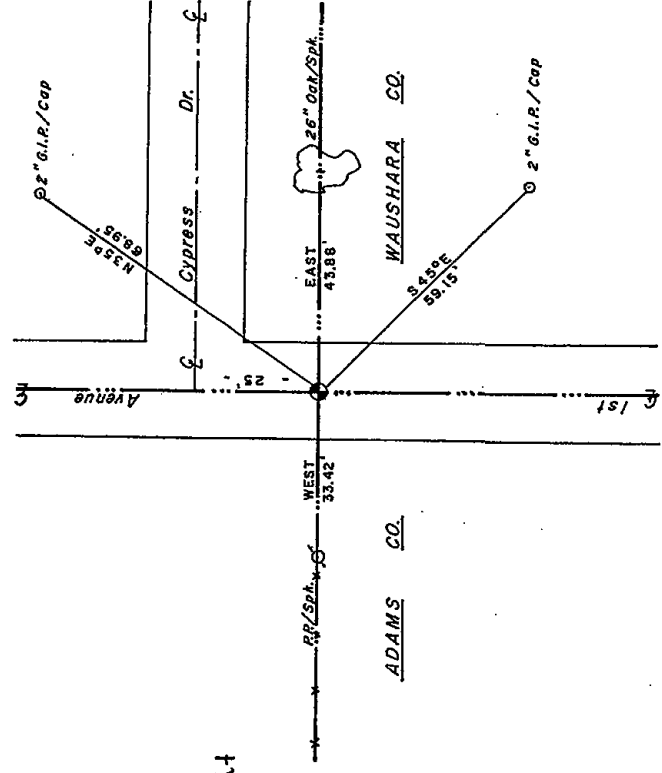
Description of corner evidence found: Road E and fence to west

No. 94

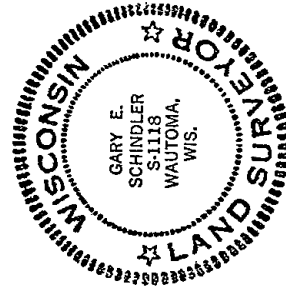
Witnesses to corner location:

Steven J. Wack

Patrick G. Krier



X = LOCATION CORNER
T 18 N R 8 E
WISCONSIN



SURVEY CONTROL ORDER

Horizontal	
Vertical	
Corner	East (X)
Control Sta. Name	

WISCONSIN COORDINATE SYSTEM

North (Y)	Elevation (Z)	Zone

Approved By:

Waushara County Highway Commissioner