

29
SECTION

18
TOWN

07
RANGE

ADAMS COUNTY

COUNTY CORNER NO: 104

ROMPORTOL ID: 41807290020

PUBLIC LAND SURVEY MONUMENT RECORD

TYPE OF MONUMENT: 3/4" IRON ROD
ADAMS COUNTY COORDINATES, NAD 83 (2007)

N. 229773.654

E. 565005.085

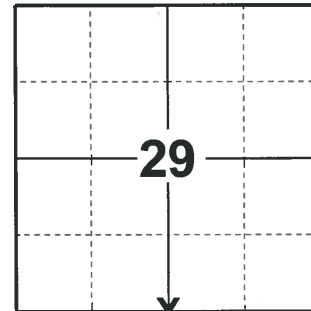
ELEVATION- - - - DATUM - - - -

FIELD WORK DATE: 01/16/2020

BASIS FOR MONUMENT LOCATION

1977 - PLS 1103 RAN EDM/T2 TRAVERSE AROUND SECTION 32 & 31, AND TO ADJACENT SECTION CORNERS TO DETERMINE SEARCH AREA FOR INVESTIGATION. EXCAVATION WITH BACKHOE YIELDED NO EVIDENCE OF THE ORIGINAL CORNER, REMONUMENTATION, OR ORIGINAL BEARING TREES. SET HARRISON MONUMENT BY SINGLE PROPORTIONATE MEASURE BETWEEN ADJACENT SECTION CORNERS.

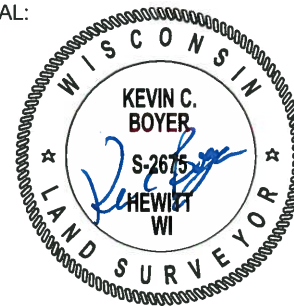
2020 - PLS 2675 FOUND 3/4" IRON ROD 3± BELOW THE DITCH WATER SURFACE AND 3 WITNESSES. THE MONUMENT AGREES WITH THE WITNESSES. ACCEPTED THE 3/4" IRON ROD AS THE CORNER LOCATION. SET 3 NEW TIES AND MEASURED TO A FOUND PROPERTY IRON AND THE EXISTING WITNESSES.



LOCATION

(INDICATE CORNER BY "X")

SEAL:



DATA SHOWN HERE ON THIS TIE SHEET IS CORRECT AND COMPLETE TO THE BEST OF MY KNOWLEDGE AND BELIEF.

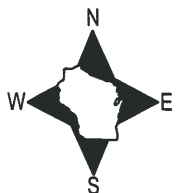
PROFESSIONAL LAND SURVEYOR

DATE 3/9/2020

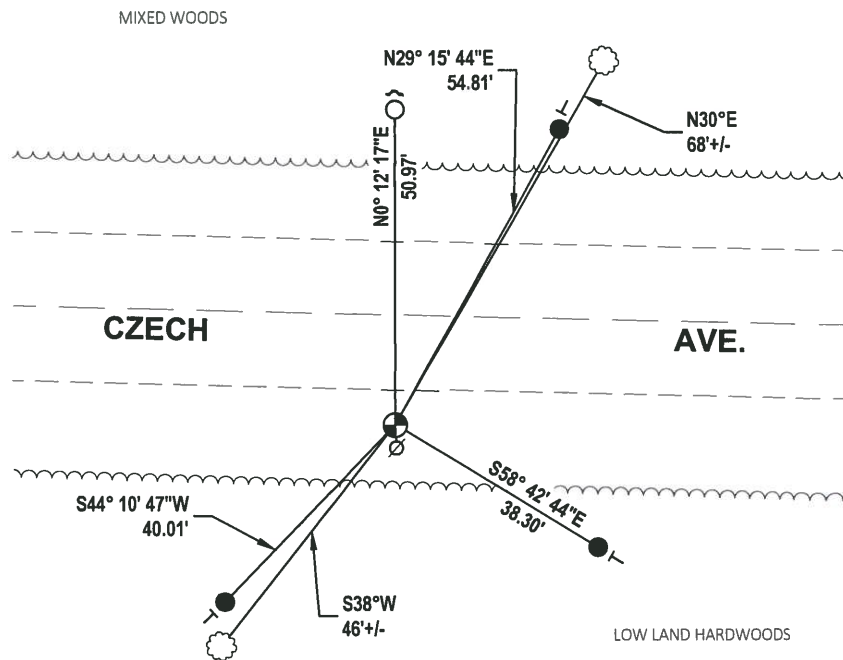
- TIE SKETCH

NOTE1: THE CORNER LANDS 18± SOUTH OF THE CENTERLINE OF CZECH AVE.

NOTE2: THE WITNESS TO THE SOUTH OF THE CORNER IS S3°W, 4± FROM THE 3/4" IRON ROD.



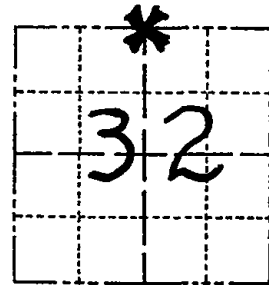
- SET 3/4" x 18" IRON REBAR, 1.50#/FT
- FOUND 3/4" IRON ROD
- ⊕ FOUND 3/4" IRON ROD MONUMENT
- ∅ WITNESS POWER POLE CUT OFF
- ┌ STEEL FENCE POST
- └ VINYL "T" POST
- ☉ WITNESS TREE



Government Land Corner Certificate

ADAMS County
 TYPE OF MONUMENT: HARRISON
 STATE PLANE COORDINATES: N _____
 E _____
 ELEVATION — M.S.L. DATUM: _____
 THETA ANGLE: _____
 FIELD BOOK: 54 PAGE 17
 DRAWN BY: D.C. HAGEN

CORNER NO. 104
 SECTION 32
 TOWN 18 N
 RANGE 7 E



LOCATION
 (Indicated by 'X')

BASIS FOR MONUMENT LOCATION

Show info such as: History of corner, with reference to Vol. and pg., dates, surveyor; exact description of monument replaced; if location computed, by taped or EDM traverse; landowner remarks, etc. (Use reverse side if necessary)

Ran EDM/T2 traverse around Section 32 & 31, and to adjacent section corners to determine search area for investigation.

Excavation with backhoe yielded no evidence of the original corner, remonumentation, or original bearing trees.

Set corner by single proportionate measure between adjacent section corners.

Set Harrison monument on 8-15-1977.

SEAL:



DATA SHOWN HERE ON
 CERTIFIED CORRECT:

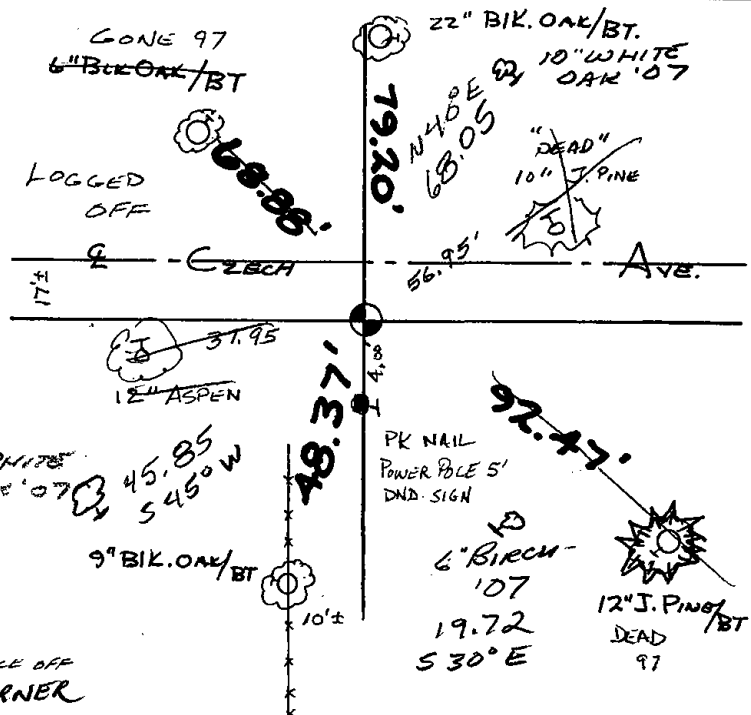
Dale C Hagen
 Registered Land Surveyor
 DATE: 9-14-1977

TIE SKETCH

Show at least four ties, also fence lines, roads, topo, size and type of witness trees' and if off road - best way to witness at corner.

NOTE

Ties in trees to nail in disc.



MAINTENANCE RECORD

Date	Init.	Remarks
3-22-82	GR-SS	O.K.
2-10-87	SS	OK
11-22-91	KZ-JG	OK
2-17-97	JG-SS	1-GONE, 3-NEW, TOP OF MON. BROKE OFF
1-08-02	JG	TIES OK, FD 3/4" ROD AT CORNER