

28  
SECTION

18  
TOWN

07  
RANGE

# ADAMS COUNTY

COUNTY CORNER NO.: 107

ROMPORTOL ID: 41807280000

## PUBLIC LAND SURVEY MONUMENT RECORD

TYPE OF MONUMENT: HARRISON  
ADAMS COUNTY COORDINATES, NAD 83 (2007)

N. 229773.171

E. 572945.568

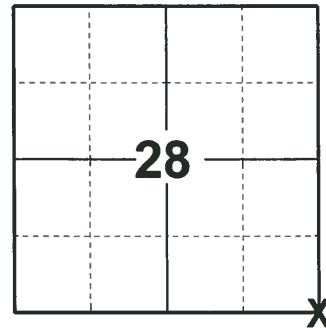
ELEVATION- - - - DATUM - - - -

FIELD WORK DATE: 01/14/2020

### BASIS FOR MONUMENT LOCATION

1974 - PLS 1103 RAN TRAVERSE ALONG EAST LINE OF SECTION 33 AND TO THE NORTH QUARTER CORNER. A THOROUGH SEARCH OF THE AREA REVEALED NO EVIDENCE OF THE CORNER. THE CORNER WAS LOCATED AT THE END OF A VERY OLD FENCE. SAID POINT FIT THE ORIGINAL NOTES VERY WELL.

2020 - PLS 2675 FOUND HARRISON MONUMENT 4"± ABOVE THE GROUND SURFACE AND 4 WITNESS TREES. THE MONUMENT AGREES WITH ALL THE WITNESS TREES. ACCEPTED THE HARRISON MONUMENT AS THE CORNER LOCATION. SET 4 NEW TIES AND MEASURED TO THE EXISTING WITNESS TREES.



LOCATION

(INDICATE CORNER BY "X")

SEAL:

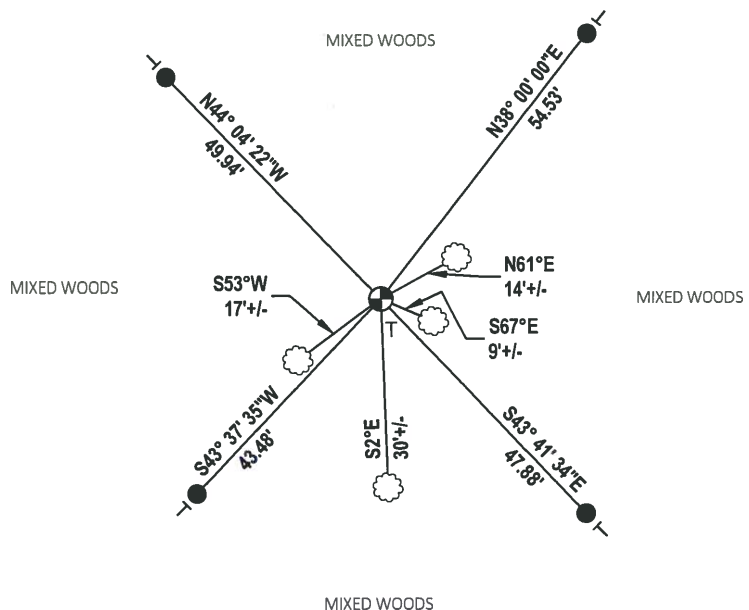
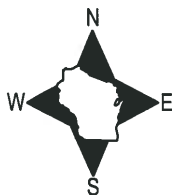


DATA SHOWN HERE ON THIS TIE SHEET IS CORRECT AND COMPLETE TO THE BEST OF MY KNOWLEDGE AND BELIEF.

PROFESSIONAL LAND SURVEYOR

DATE 3/9/2020

### - TIE SKETCH



- SET 3/4" x 18" IRON REBAR, 1.50#/FT
- ⊕ FOUND HARRISON MONUMENT
- VINYL "T" POST
- ☁ WITNESS TREE

**ADAMS COUNTY**

**Survey Monument Record**

TYPE OF MONUMENT: Harrison Monument

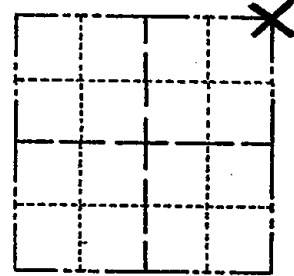
STATE PLANE COORDINATES: N \_\_\_\_\_  
E \_\_\_\_\_

ELEVATION — M.S.L. DATUM: \_\_\_\_\_

THETA ANGLE: \_\_\_\_\_

FIELD BOOK: \_\_\_\_\_ PAGE \_\_\_\_\_

(107)  
CORNER NO. 565  
SECTION 33  
TOWN 18  
RANGE 7



LOCATION  
(Indicated by 'X')

SEAL:



**BASIS FOR MONUMENT LOCATION**

(Use reverse side if necessary)

Show info such as: History of corner, with reference to Vol. and pg, dates, surveyor; exact description of monument replaced; if location computed, by taped or EDM traverse; landowner remarks, etc.

Ran traverse along East line of Section 33 and to the North Quarter corner.

A thorough search of the area revealed no evidence of the corner.

The corner was located at the end of a very old fence. Said point fit the original notes very well.

CORNER	O.K.	3-14-77	GR-SS
"	"	5-24-82	PK-SS
"	"	2-20-87	SS
"	"	1-10-92	JG
"	"	11-19-97	JG

CERTIFIED CORRECT:

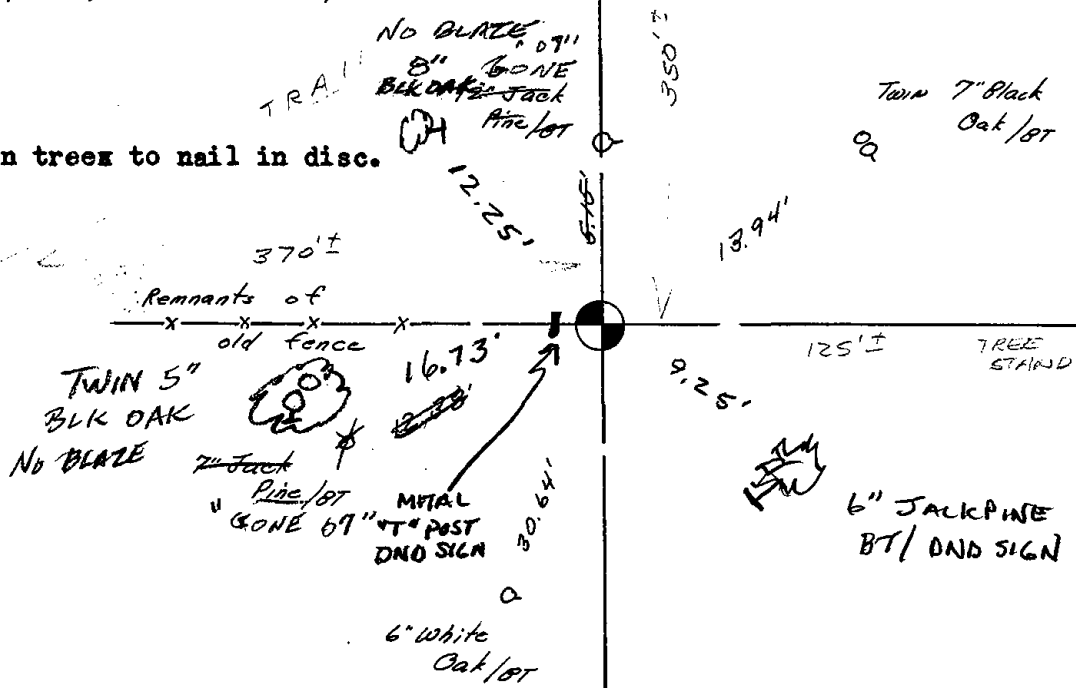
*Dale C. Hagen*  
Registered Land Surveyor

DATE: October 4, 1974

**TIE SKETCH** OK 1/30/02 GR

(Show at least four ties) 2-GONE, 3-NEW, 4-20-07 JG

**NOTE:**  
Ties in trees to nail in disc.



19