

36
SECTION

18
TOWN

06
RANGE

ADAMS COUNTY

COUNTY CORNER NO: 120

ROMPORTOL ID: 41806362000

PUBLIC LAND SURVEY MONUMENT RECORD

TYPE OF MONUMENT: HARRISON (BROKEN-TOP)
ADAMS COUNTY COORDINATES, NAD 83 (2007)

N. 227051.570

E. 557357.127

ELEVATION- DATUM

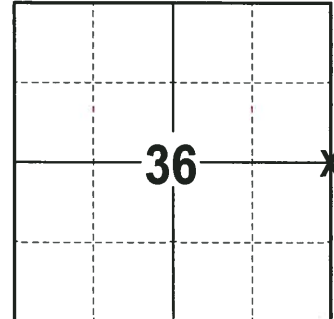
FIELD WORK DATE: 01/11/2018

BASIS FOR MONUMENT LOCATION

1977 - PLS 1103 RAN EDM/T2 TRAVERSE AROUND SECTIONS 31, 32 AND TO ADJACENT SECTION CORNERS TO DETERMINE THE SEARCH AREA FOR INVESTIGATION. DID NOT FIND ANY EVIDENCE OF THE ORIGINAL CORNER, REMONUMENTATION OR BEARING TREES. RELOCATED THE CORNER BY SINGLE PROPORTIONATE MEASUREMENT BETWEEN ADJACENT SECTION CORNERS. SET A HARRISON MONUMENT AT THE CORNER LOCATION AND TIED OUT.

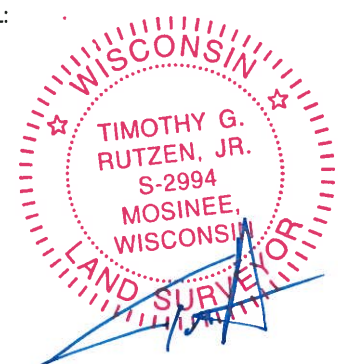
2007 - PLS (UNKNOWN) RE-TIED FOR PIPELINE CONSTRUCTION. NOTED THAT THE TOP OF THE HARRISON WAS BROKEN OFF.

2018 - PLS 2994 FOUND A HARRISON MONUMENT WITH A BROKEN-TOP 4" BELOW THE GROUND SURFACE, 1 TIE AND 1 WITNESS. THE MONUMENT AGREES WITH THE EXISTING TIE AND WITNESS. ACCEPTED THE HARRISON MONUMENT WITH A BROKEN-TOP AS THE CORNER LOCATION. SET 3 NEW TIES AND MEASURED TO THE TIES AND WITNESS.



LOCATION
(INDICATE CORNER BY "X")

SEAL:



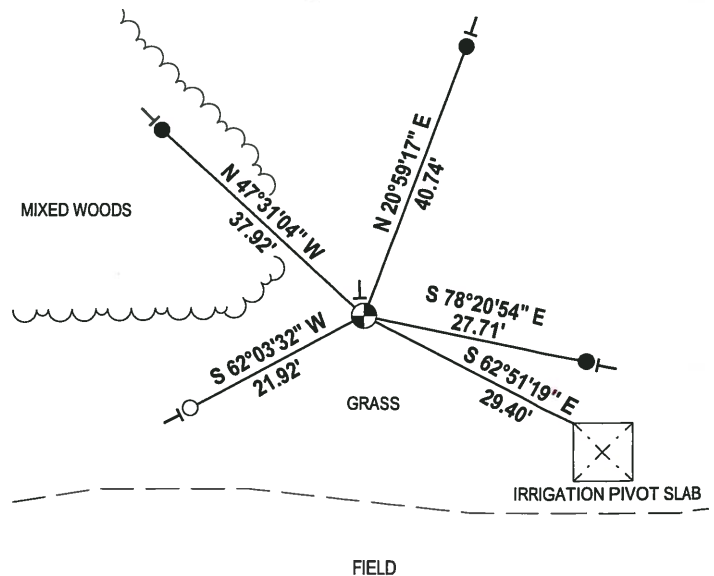
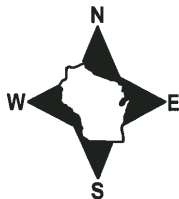
DATA SHOWN HERE ON THIS TIE SHEET IS CORRECT AND COMPLETE TO THE BEST OF MY KNOWLEDGE AND BELIEF.

PROFESSIONAL LAND SURVEYOR

DATE 3-1-18

- TIE SKETCH

NOTE: THE CORNER FALLS 31'± NORTH OF THE FIELD EDGE.

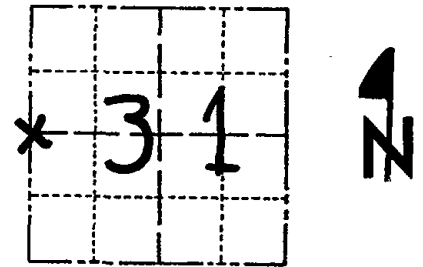


- 3/4" x 18" IRON REBAR SET, 1.50#/FT
- 1-1/4" IRON ROD FOUND
- ⊕ HARRISON (BROKEN-TOP) FOUND
- VINYL "T" POST

Government Land Corner Certificate

ADAMS County
 TYPE OF MONUMENT: HARRISON
 STATE PLANE COORDINATES: N _____
 E _____
 ELEVATION — M.S.L. DATUM: _____
 THETA ANGLE: _____
 FIELD BOOK: 54 PAGE 19
 DRAWN BY: D.C. HAGEN

CORNER NO. 114
 SECTION 31
 TOWN 18 N
 RANGE 7 E



LOCATION
 (Indicated by 'X')

BASIS FOR MONUMENT LOCATION

Show info such as: History of corner, with reference to Vol. and pg., dates, surveyor; exact description of monument replaced; if location computed, by taped or EDM traverse; landowner remarks, etc. (Use reverse side if necessary)

Ran EDM/T2 traverse around Sections 31 & 32, and to adjacent section corners to determine search area for investigation.

Could find no evidence of the original corner, remonumentation or bearing trees.

Relocated corner by single proportionate measure between adjacent section corners.

Set Harrison on 8-15-77.

SEAL:



DATA SHOWN HERE ON
 CERTIFIED CORRECT:

Dale C Hagen
 Registered Land Surveyor

DATE: 9-14-1977

* SEE BACK SIDE "97"

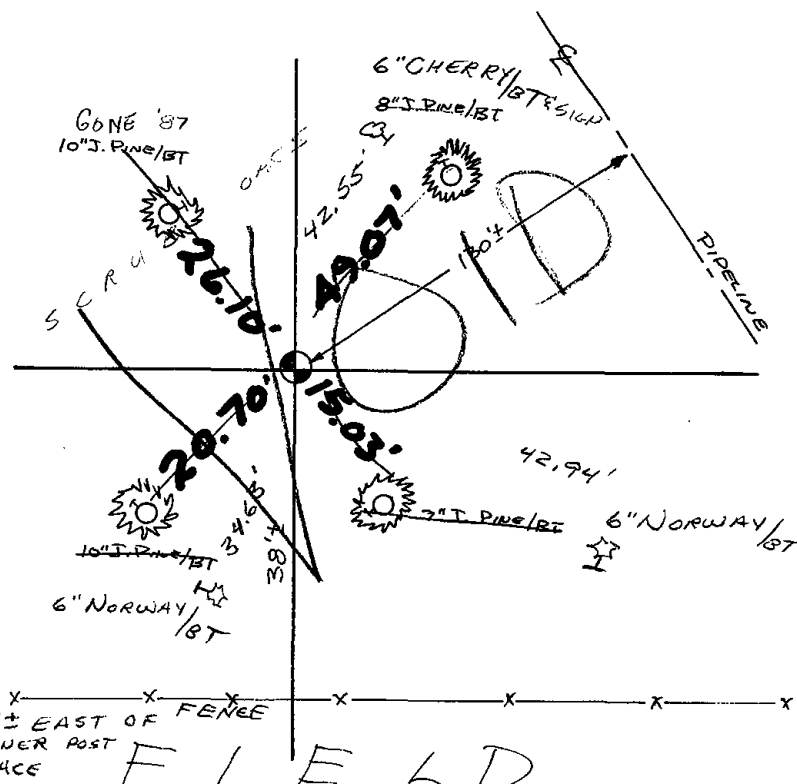
TIE SKETCH

Show at least four ties, also fence lines, roads, topo, size and type of witness trees' and if off road - best way to arrive at corner.

NOTE

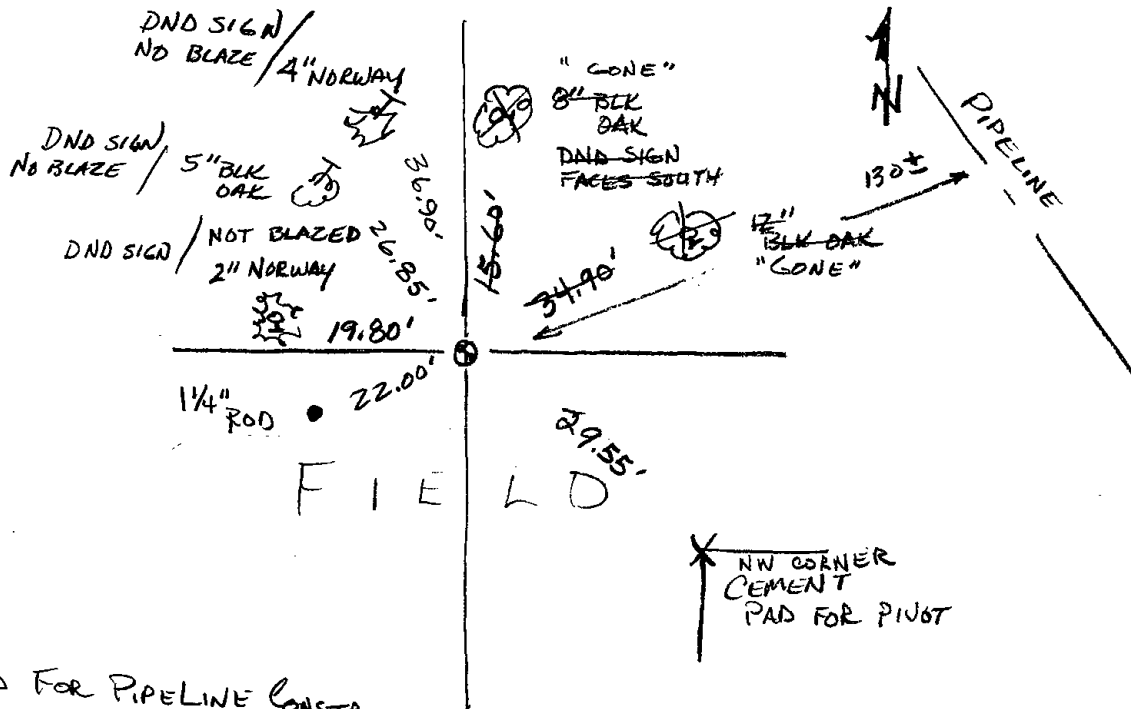
Ties in trees to nail in disc.

Best arrived at by pipeline or off road 1/4 mile West.



MAINTENANCE RECORD

Date	Init.	Remarks
5-24-82	PK-SS	COR. OK - NEW TIES
2-10-87	SS	160NG - NOTHING AVAILABLE
1-10-92	JG	OK
11-19-97	JG	4-NEW TIES, MON. OK
1-08-02	JG	OK
4-10-07	JG	SEE BACK OF PAGE



RETIRED FOR PIPELINE CONSTR.
 TOP BROKEN OFF HARRISON
 DND SIGN ON GREEN METAL POST
 @ CORNER 4-10-07-JG