

31
SECTION

18
TOWN

07
RANGE

ADAMS COUNTY

COUNTY CORNER NO: 115
ROMPORTOL ID: 41807312000

PUBLIC LAND SURVEY MONUMENT RECORD

TYPE OF MONUMENT: HARRISON
ADAMS COUNTY COORDINATES, NAD 83 (2007)

N. 277132.108

E. 562382.226

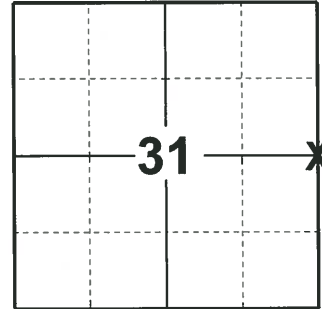
ELEVATION- - - - DATUM - - - -

FIELD WORK DATE: 01/14/2020

BASIS FOR MONUMENT LOCATION

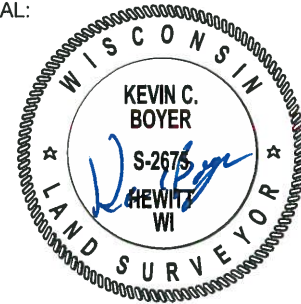
1977 - PLS 1103 RAN EDM/T2 TRAVERSE AROUND SECTION 31 & 32, AND TO ADJACENT SECTION CORNERS TO DETERMINE SEARCH AREA FOR INVESTIGATION. INVESTIGATION YIELDED REMAINS OF DRIVEN POST AT INTERSECTION OF ANCIENT FENCES TO THE EAST AND SOUTH. THIS EVIDENCE FITS OCCUPATION AND ORIGINAL DISTANCES VERY WELL AND WAS ACCEPTED AS THE CORNER IN LIEU OF CORROBORATING EVIDENCE SUCH AS BEARING TREES. SET HARRISON MONUMENT.

2020 - PLS 2675 FOUND HARRISON MONUMENT FLUSH WITH THE GROUND AND 3 WITNESS TREES. THE MONUMENT AGREES WITH ALL 3 WITNESS TREES. ACCEPTED THE HARRISON MONUMENT AS THE CORNER LOCATION. SET 4 NEW TIES AND MEASURED TO THE EXISTING WITNESS TREES.



LOCATION
(INDICATE CORNER BY "X")

SEAL:

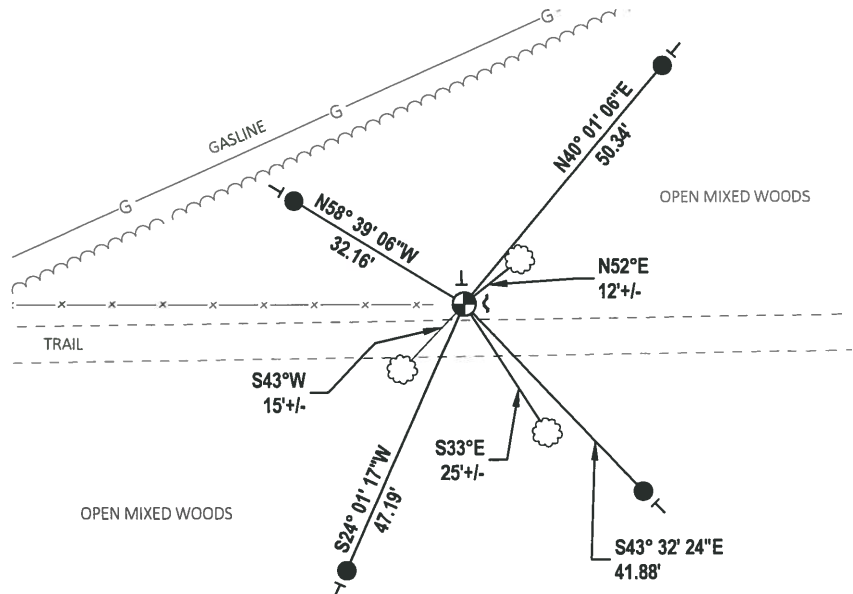


DATA SHOWN HERE ON THIS TIE SHEET IS CORRECT AND COMPLETE TO THE BEST OF MY KNOWLEDGE AND BELIEF.

PROFESSIONAL LAND SURVEYOR

DATE 3/9/2020

- TIE SKETCH

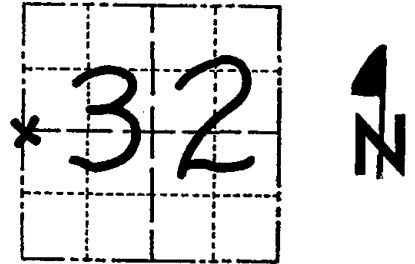


- SET 3/4" x 18" IRON REBAR, 1.50#/FT
- ⊙ FOUND HARRISON MONUMENT
- ┌ STEEL FENCE POST
- └ VINYL "T" POST
- ☼ WITNESS TREE

Government Land Corner Certificate

ADAMS County
 TYPE OF MONUMENT: HARRISON
 STATE PLANE COORDINATES: N _____
 E _____
 ELEVATION — M.S.L. DATUM: _____
 THETA ANGLE: _____
 FIELD BOOK: 54 PAGE 20
 DRAWN BY: D.C. HAGEN

CORNER NO. 115
 SECTION 32
 TOWN 18 N
 RANGE 7 E



LOCATION
 (Indicated by 'X')

BASIS FOR MONUMENT LOCATION

Show info such as: History of corner, with reference to Vol. and pg., dates, surveyor; exact description of monument replaced; if location computed, by taped or EDM traverse; landowner remarks, etc. (Use reverse side if necessary)

Ran EDM/T2 traverse around Sections 31 & 32, and to adjacent section corners to determine search area for investigation. SEAL:

Investigation yielded remains of driven post at intersection of ancient fences to the East and South. This evidence fits occupation and original distances very well and was accepted as the corner in lieu of corroborating evidence such as bearing trees.

Set Harrison monument on 8-16-1977.



DATA SHOWN HERE ON
 CERTIFIED CORRECT:

Dale C Hagen
 Registered Land Surveyor

DATE: 9-14-1977.

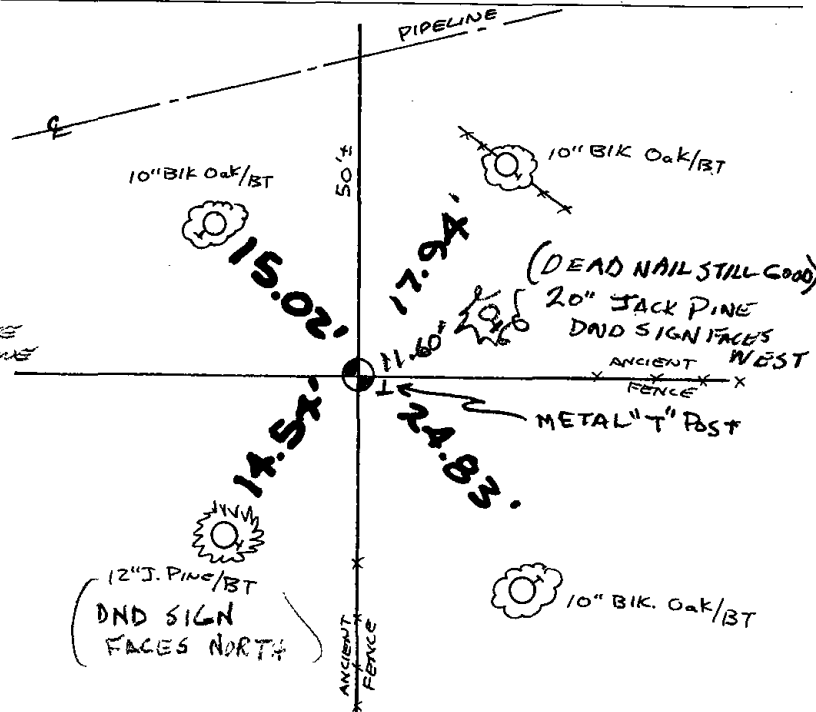
TIE SKETCH

Show at least four ties, also fence lines, roads, topo, size and type of witness trees' and if off road - best way to arrive at corner.

NOTES

- 1) Ties in trees to nail in disc.
- 2) Best entry via pipeline.

MAINTAINED FENCE
 CROSSES PIPELINE



MAINTENANCE RECORD

Date	Init.	Remarks
5-21-82	PK-SS	O.K.
2-10-87	SS	"
1-10-92	JG	"
11-19-97	JG	ALL OK, 1-NEW TIE
1-08-02	JG	OK
4-20-07	JG	OK