

32 SECTION 18 TOWN 07 RANGE

ADAMS COUNTY

COUNTY CORNER NO: 116
 ROMPORTOL ID: 41807322000

PUBLIC LAND SURVEY MONUMENT RECORD

TYPE OF MONUMENT: HARRISON
 ADAMS COUNTY COORDINATES, NAD 83 (2007)

N. 227130.235

E. 567662.748

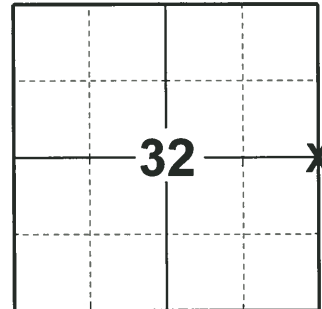
ELEVATION- - - - DATUM - - - -

FIELD WORK DATE: 01/14/2020

BASIS FOR MONUMENT LOCATION

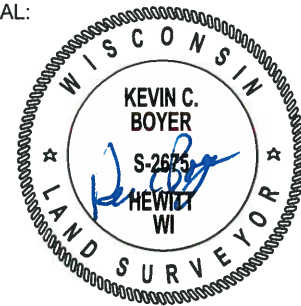
1977 - PLS 1103 RAN EDM/T2 TRAVERSE AROUND SECTIONS 31 AND 32, AND TO ADJACENT SECTION CORNERS TO DETERMINE SEARCH AREAS FOR INVESTIGATION. COULD FIND NO EVIDENCE OF THE ORIGINAL CORNER, REMONUMENTATION OR BEARING TREES. RELOCATED CORNER BY SINGLE PROPORTIONATE MEASURE BETWEEN ADJACENT SECTION CORNERS. SET HARRISON MONUMENT.

2020 - PLS 2675 FOUND HARRISON MONUMENT 4"± ABOVE THE GROUND SURFACE AND 2 WITNESS TREES. THE MONUMENT AGREES WITH BOTH WITNESS TREES. ACCEPTED THE HARRISON MONUMENT AS THE CORNER LOCATION. SET 4 NEW TIES AND MEASURED TO THE EXISTING WITNESS TREES.



LOCATION
 (INDICATE CORNER BY "X")

SEAL:

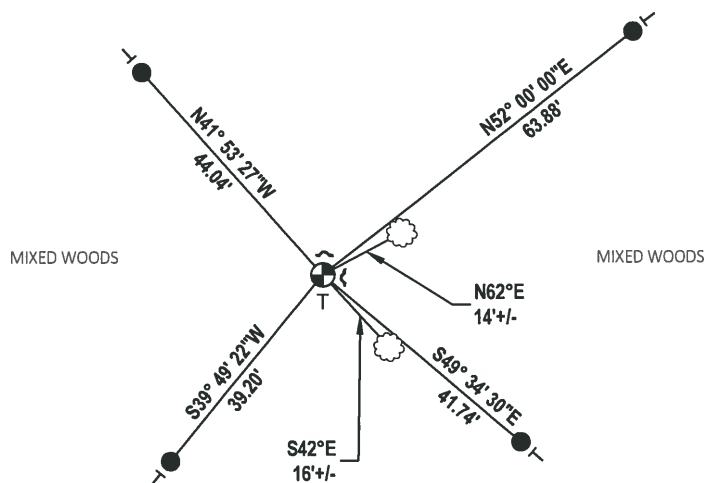


DATA SHOWN HERE ON THIS TIE SHEET IS CORRECT AND COMPLETE TO THE BEST OF MY KNOWLEDGE AND BELIEF.

PROFESSIONAL LAND SURVEYOR

DATE 3/9/2020

- TIE SKETCH

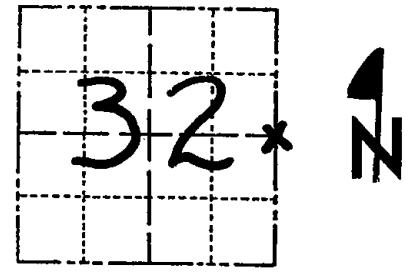


- SET 3/4" x 18" IRON REBAR, 1.50#/FT
- ⊕ FOUND HARRISON MONUMENT
- ┌ STEEL FENCE POST
- └ VINYL "T" POST
- ☁ WITNESS TREE

Government Land Corner Certificate

ADAMS County
 TYPE OF MONUMENT: HARRISON
 STATE PLANE COORDINATES: N _____ E _____
 ELEVATION — M.S.L. DATUM: _____
 THETA ANGLE: _____
 FIELD BOOK: 54 PAGE 21
 DRAWN BY: D.C. HAGEN

CORNER NO. 116
 SECTION 32
 TOWN 18 N
 RANGE 7 E



LOCATION
 (Indicated by 'X')

BASIS FOR MONUMENT LOCATION

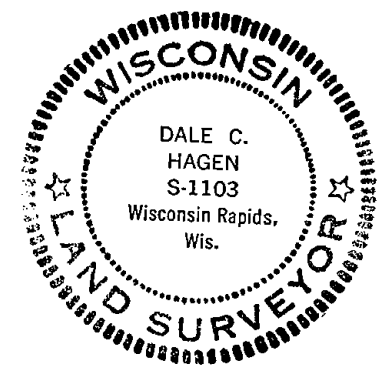
Show info such as: History of corner, with reference to Vol. and pg., dates, surveyor; exact description of monument replaced; if location computed, by taped or EDM traverse; landowner remarks, etc. (Use reverse side if necessary)

Ran EDM/T2 traverse around Sections 31 and 32, and to adjacent section corners to determine search areas for investigation.

Could find no evidence of the original corner, remonumentation or bearing trees.

Relocated corner by single proportionate measure between adjacent section corners.

Set Harrison on 8-17-77.



DATA SHOWN HERE ON CERTIFIED CORRECT:

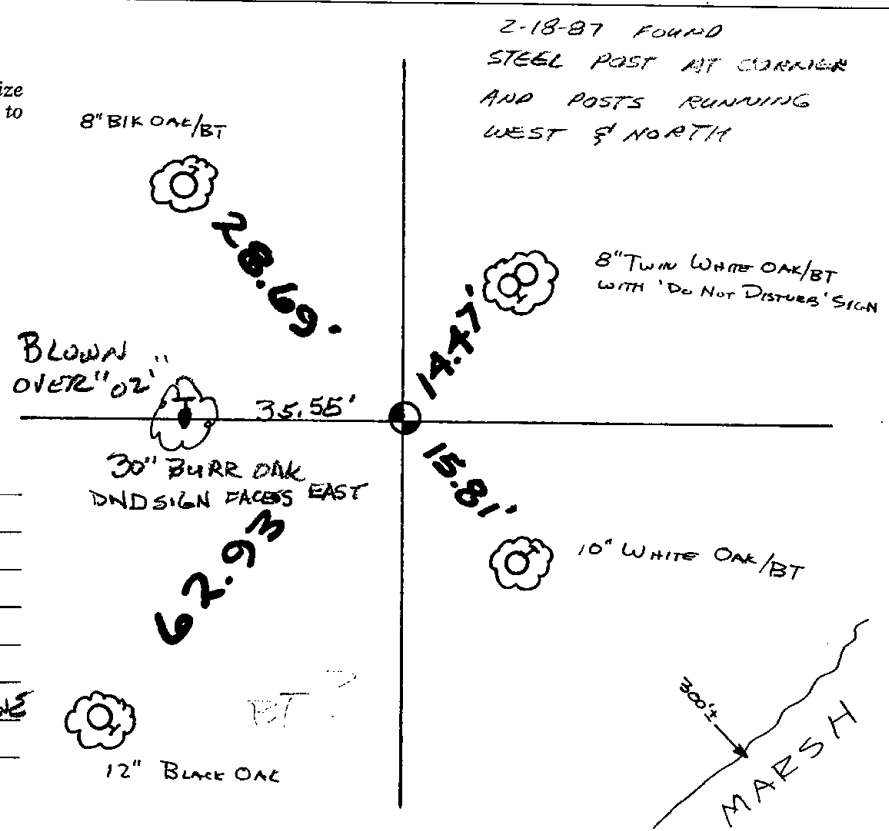
Dale C Hagen
 Registered Land Surveyor
 DATE: 9-14-77

TIE SKETCH

Show at least four ties, also fence lines, roads, topo, size and type of witness trees and if off road - best way to arrive at corner.

NOTE

Ties in trees to nail in disc.
 Best entry from East through farm.



MAINTENANCE RECORD

Date	Init.	Remarks
5-24-82	PK-SS	OK
2-18-87	SS	OK
6-2-92	JG	OK
11-19-97	JG	NEW TIE, MON. OK
1-30-02	GR	MON OK - SIGNS GONE
2-8-06	JG	OK