

36
SECTION

18
TOWN

07
RANGE

ADAMS COUNTY

COUNTY CORNER NO: 119A

ROMPORTOL ID: 41807362020

PUBLIC LAND SURVEY MONUMENT RECORD

TYPE OF MONUMENT: 2-3/8" O.D. IRON PIPE W/ALUMINUM CAP
ADAMS COUNTY COORDINATES, NAD 83 (2007)

N. 227232.954

E. 586174.188

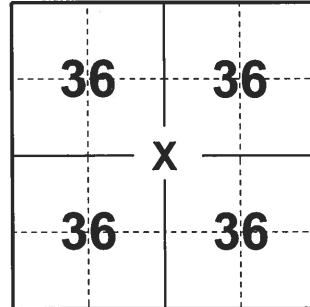
ELEVATION- _____ DATUM _____

FIELD WORK DATE: 02/06/2020

BASIS FOR MONUMENT LOCATION

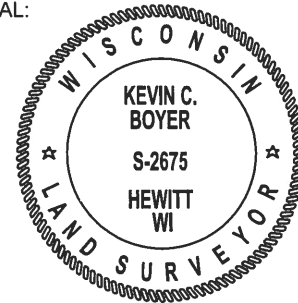
1981 - PLS 878 SET 2" IRON PIPE WITH CAP AT THE INTERSECTION OF STRAIGHT QUARTER LINES.

2020 - PLS 2675 FOUND 2-3/8" O.D. IRON PIPE W/ALUMINUM CAP, SEVERLY LEANING, AND DID NOT RECOVER ANY TIES OR WITNESSES. RESET THE 2-3/8" O.D. IRON PIPE ON A STRAIGHT LINE INTERSECTION BETWEEN THE QUARTER CORNERS OF SECTION 36.



LOCATION
(INDICATE CORNER BY "X")

SEAL:

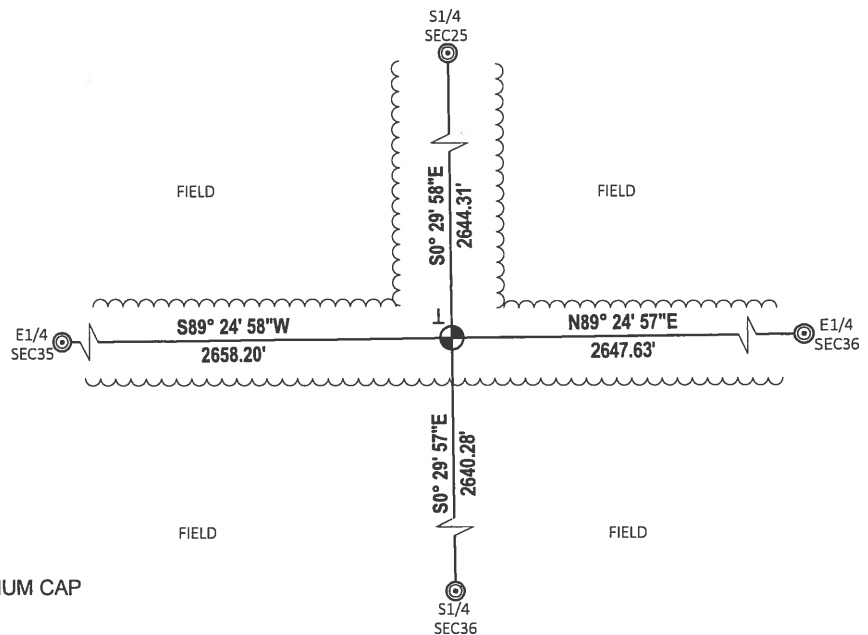
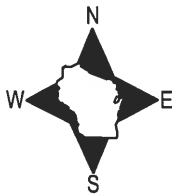


DATA SHOWN HERE ON THIS TIE SHEET IS CORRECT AND COMPLETE TO THE BEST OF MY KNOWLEDGE AND BELIEF.

PROFESSIONAL LAND SURVEYOR

DATE _____

- TIE SKETCH -

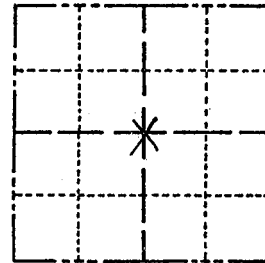


- ⊙ FOUND HARRISON MONUMENT
- ⊙ FOUND 2-3/8" O.D. IRON PIPE W/ALUMINUM CAP
- ├ VINYL "T" POST

Government Land Corner Certificate

ADAMS County
 TYPE OF MONUMENT: 2" IRON PIPE w/ CAP
 STATE PLANE COORDINATES: N _____
 E _____
 ELEVATION — M.S.L. DATUM: _____
 THETA ANGLE: _____
 FIELD BOOK: 88 PAGE 67
 DRAWN BY: L. COOMBS

CORNER NO. 119A
 SECTION 36
 TOWN 18
 RANGE 7



LOCATION
 (Indicated by 'X')

BASIS FOR MONUMENT LOCATION

Show info such as: History of corner, with reference to Vol. and pg., dates, surveyor; exact description of monument replaced; if location computed, by taped or EDM traverse; landowner remarks, etc. (Use reverse side if necessary)

Set at the intersection of straight Quarter lines.

SEAL:



DATA SHOWN HERE ON CERTIFIED CORRECT:

Anthony B. Kiedrowski
 Registered Land Surveyor

DATE: 10/7/81

TIE SKETCH

Show at least four ties, also fence lines, roads, topo, size and type of witness trees and if off road - best way to arrive at corner.

