

32
SECTION

18
TOWN

07
RANGE

ADAMS COUNTY

COUNTY CORNER NO: 125

ROMPORTOL ID: 41807320000

PUBLIC LAND SURVEY MONUMENT RECORD

TYPE OF MONUMENT: 1-1/4" IRON ROD
ADAMS COUNTY COORDINATES, NAD 83 (2007)

N. 224490.213

E. 567672.038

ELEVATION- DATUM

FIELD WORK DATE: 01/09/2018

BASIS FOR MONUMENT LOCATION

1977 - PLS 1103 RAN EDM/T2 TRAVERSE AROUND SECTIONS 31, 32 AND ADJACENT SECTION CORNERS TO DETERMINE THE SEARCH AREAS FOR INVESTIGATION. THE SEARCH AREA FALLS IN THE NORTH DITCH, SO DID NOT EXCAVATE THERE, BUT DID EXCAVATE ON THE CENTERLINE TO DETERMINE IF THE ROAD IS ON A SECTION LINE. COULD NOT FIND ANY EVIDENCE OF THE ORIGINAL CORNER OR ITS WITNESS MONUMENTATION. CALCULATED THE CORNER LOCATION BY DOUBLING THE DISTANCE FROM THE SW TO THE S1/4 CORNER AND AT RECORD DISTANCES FROM THE NORTH-EAST CORNER OF SECTION 32. IT APPEARS THE SOUTH 1/4 CORNER OF SECTION 33 WAS SET TOO FAR WEST BY SMITH, AFTER RUNNING THE SOUTH LINE OF TOWNSHIP 18-7. SET A HARRISON MONUMENT AT THE CALCULATED LOCATION AND TIED OUT.

2002 - PRIOR TIE SHEET NOTED MONUMENT NEEDS TO BE REPLACED.

2017 - PLS 2994 FOUND A 1-1/4" IRON ROD FLUSH WITH THE GROUND SURFACE. FOUND NO EVIDENCE OF ANY WITNESS TREES OR TIES. VERIFIED THE LOCATION OF THE 1-1/4" IRON ROD WITH CSM 3334. DISTANCES TO S1/4 SECTION 32 FIT WELL. ACCEPTED THE 1-1/4" IRON ROD AS THE BEST EVIDENCE OF THE CORNER LOCATION. SET 4 NEW TIES AND MEASURED TO THE TIES.



LOCATION
(INDICATE CORNER BY "X")

SEAL:



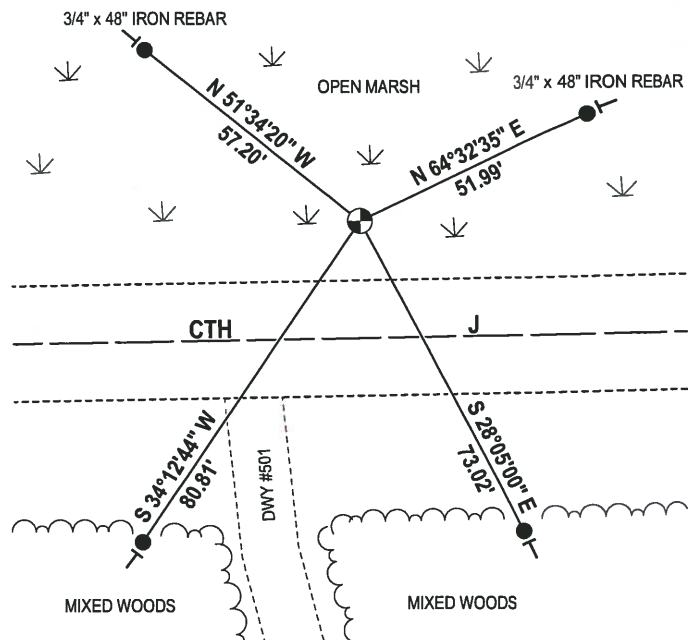
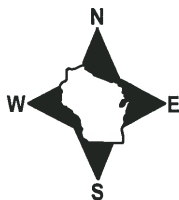
DATA SHOWN HERE ON THIS TIE SHEET IS CORRECT AND COMPLETE TO THE BEST OF MY KNOWLEDGE AND BELIEF.

PROFESSIONAL LAND SURVEYOR

DATE 2-2-18

- TIE SKETCH

NOTE: THE CORNER FALLS 24± NORTH OF THE CENTERLINE OF CTH J.

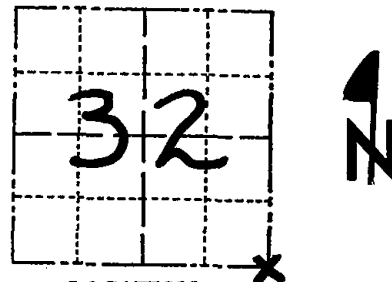


- 3/4" x 18" IRON REBAR SET, 1.50#/FT (UNLESS NOTED)
- ⊕ 1-1/4" IRON ROD FOUND
- VINYL "T" POST

Government Land Corner Certificate

ADAMS County
 TYPE OF MONUMENT: HARRISON
 STATE PLANE COORDINATES: N _____
 E _____
 ELEVATION — M.S.L. DATUM: _____
 THETA ANGLE: _____
 FIELD BOOK: 54 PAGE 20
 DRAWN BY: D.C. HAGEN

CORNER NO. 125
 SECTION 32
 TOWN 18 N
 RANGE 7 E



LOCATION
 (Indicated by 'X')

BASIS FOR MONUMENT LOCATION

Show info such as: History of corner, with reference to Vol. and pg., dates, surveyor; exact description of monument replaced; if location computed, by taped or EDM traverse; landowner remarks, etc. (Use reverse side if necessary)

Ran EDM/T2 traverse around Sections 31 and 32 and to adjacent section corners to determine search areas for investigation.

Search area falls in North ditch, so did not excavate there, but did excavate on centerline to determine if road is on section line. Could find no evidence of original corner or witness monumentation.

Relocated corner by doubling distance from SW to S $\frac{1}{4}$ and at record distance from North-east corner of Section 32. It appears the S $\frac{1}{4}$ corner of 33 was set too far West by Smith, after running South line of Town 18-7.

Set Harrison on 8-16-77.

SEAL:



DATA SHOWN HERE ON
 CERTIFIED CORRECT:

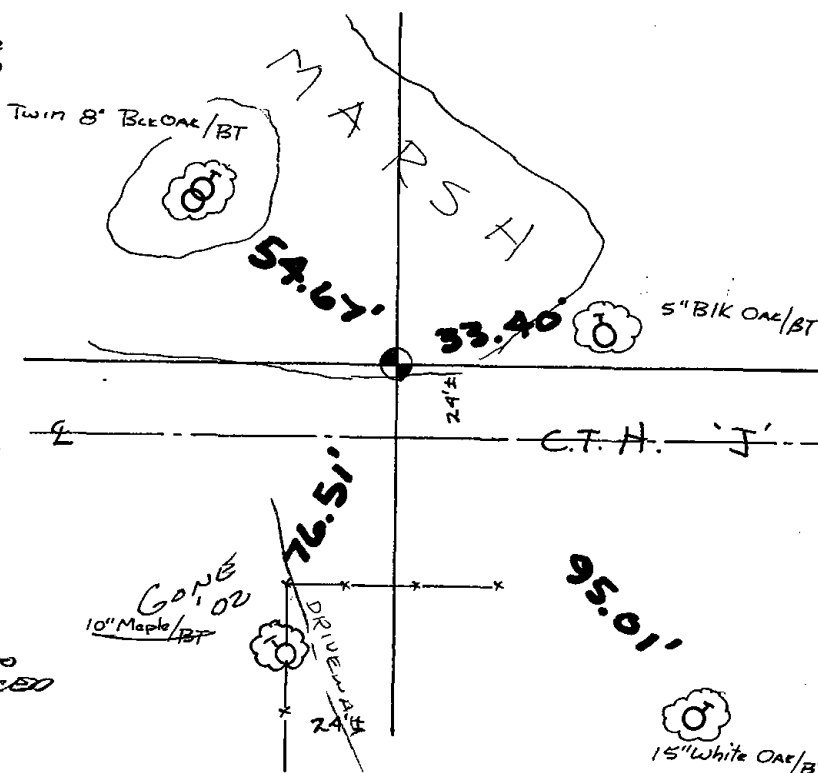
Dale C. Hagen
 Registered Land Surveyor
 DATE: 9-14-77

TIE SKETCH

Show at least four ties, also fence lines, roads, topo, size and type of witness trees and if off road - best way to arrive at corner.

NOTE

Ties in trees to nail in disc.



MAINTENANCE RECORD

Date	Init.	Remarks
5-21-82	PK-SS	O.K.
2-10-87	SS	"
1-10-92	JG	"
2-18-97	JG-SS	OK
1-9-02	JG-SS	3 TIES - MON NEEDS TO
4-10-07	JG	TIES OK BE REPLACED