

33
SECTION

18
TOWN

07
RANGE

ADAMS COUNTY

COUNTY CORNER NO: 126

ROMPORTOL ID: 41807330020

PUBLIC LAND SURVEY MONUMENT RECORD

TYPE OF MONUMENT: HARRISON (BROKEN-TOP)
ADAMS COUNTY COORDINATES, NAD 83 (2007)

N. 224505.145

E. 570251.921

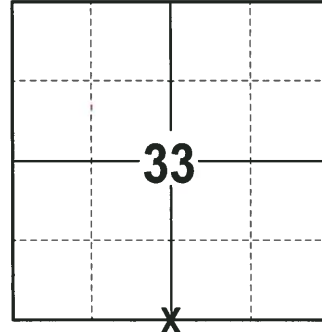
ELEVATION- DATUM

FIELD WORK DATE: 01/09/2018

BASIS FOR MONUMENT LOCATION

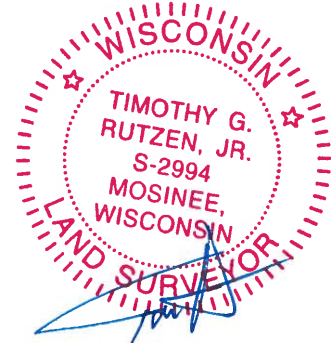
1974 - PLS 1103 EXCAVATED WITH A BACKHOE, BUT COULD NOT FIND ANY EVIDENCE OF THE ORIGINAL CORNER, ACCESSORY MONUMENTS OR REMONUMENTATION OF ANY KIND. CALCULATED THE CORNER LOCATION BY RETRACING A SURVEY BY M.C. SMITH ON APRIL 16, 1913. FOUND A STONE AT THE CENTER OF SECTION AND NORTH QUARTER CORNER, AND DOUBLED OVER TO SET THE SOUTH QUARTER CORNER. SET A HARRISON MONUMENT AT THE CORNER LOCATION AND TIED OUT.

2017 - PLS 2994 FOUND A HARRISON MONUMENT WITH A BROKEN-TOP 18" BELOW THE ROAD SURFACE AND 4 RIGHT OF WAY IRONS WITH GUARD POSTS. FOUND NO EVIDENCE OF ANY TIES OR WITNESSES. ACCEPTED THE HARRISON WITH A BROKEN-TOP AS THE BEST EVIDENCE OF THE CORNER LOCATION. MEASURED TO THE RIGHT OF WAY IRONS TO BE USED AS TIES.



LOCATION
(INDICATE CORNER BY "X")

SEAL:



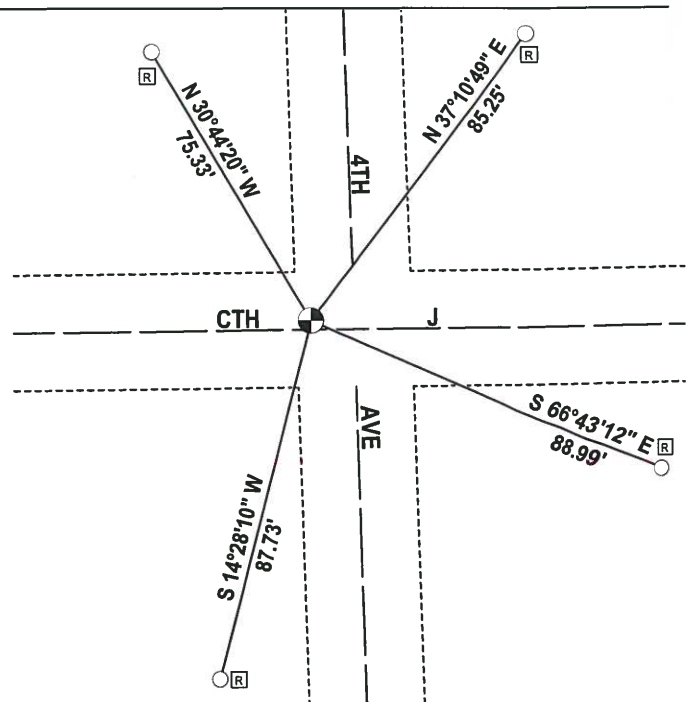
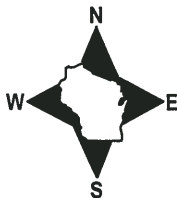
DATA SHOWN HERE ON THIS TIE SHEET IS CORRECT AND COMPLETE TO THE BEST OF MY KNOWLEDGE AND BELIEF.

PROFESSIONAL LAND SURVEYOR

DATE 2-2-18

- TIE SKETCH -

NOTE: THE CORNER FALLS 2± NORTH OF THE CENTERLINE OF CTH J AND 9± WEST OF THE CENTERLINE OF 4TH AVE.



- 5/8" IRON ROD FOUND
- ⊕ HARRISON (BROKEN-TOP) FOUND
- Ⓜ RW GUARD POST

ADAMS COUNTY

Survey Monument Record

TYPE OF MONUMENT: Standard Harrison

STATE PLANE COORDINATES: N _____

E _____

ELEVATION — M.S.L. DATUM: _____

THETA ANGLE: _____

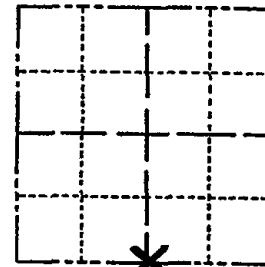
FIELD BOOK: _____ PAGE _____

CORNER NO. 564

SECTION 33

TOWN 18

RANGE 7



LOCATION
(Indicated by 'X')

SEAL:

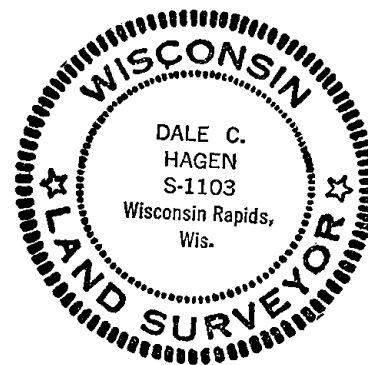
BASIS FOR MONUMENT LOCATION

(Use reverse side if necessary)

Show info such as: History of corner, with reference to Vol. and pg. dates, surveyor; exact description of monument replaced; if location computed, by taped or EDM traverse; landowner remarks, etc.

Excavated with backhoe, but could find no evidence of the original corner or any of its accessory monuments or remonumentation.

Relocated corner by retracing survey by M. C. Smith on April 16, 1913. Found Stone at Center of Section and North Quarter corner, and doubled over to set South Quarter corner.



CORNER O.K. 3-14-77 GR-55
 " " 5-21-82 PK-55
 " " 2-10-87 SS
 " " 1-10-92 JG
 2 GONE - 3 NEW TIES 2-18-97 JG-55
 OK 1-08-02 JG-55

CERTIFIED CORRECT:
Dale C. Hagen
 Registered Land Surveyor
 DATE: October 4, 1974

TIE SKETCH OK, 4-10-17-JG

(Show at least four ties)

NOTE:

Ties in trees to nail in disc.

