

35
SECTION

18
TOWN

07
RANGE

ADAMS COUNTY

COUNTY CORNER NO: 131

ROMPORTOL ID: 41807350000

PUBLIC LAND SURVEY MONUMENT RECORD

TYPE OF MONUMENT: HARRISON
ADAMS COUNTY COORDINATES, NAD 83 (2007)

N. 224568.780

E. 583556.731

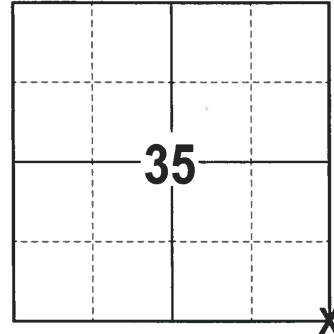
ELEVATION- DATUM

FIELD WORK DATE: 01/10/2018

BASIS FOR MONUMENT LOCATION

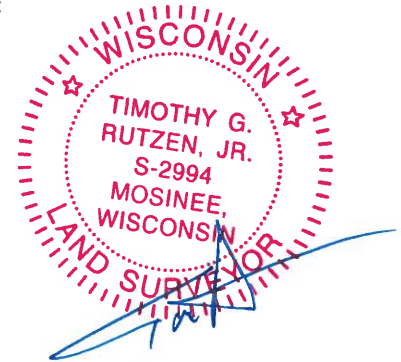
1979 - PLS 1478 DOUBLED OVER THE SOUTH LINE OF THE SE1/4 OF SECTION 36-18-7 TO SET THIS CORNER. THE LOCATION FIT A TRAVERSE OF THE ENTIRE TOWN LINE TO THE WEST VERY WELL. SET A HARRISON MONUMENT AT THE CORNER LOCATION AND TIED OUT.

2017 - PLS 2994 FOUND A HARRISON MONUMENT 2" BELOW THE ROAD SURFACE. FOUND NO EVIDENCE OF ANY TIES OR WITNESSES. ACCEPTED THE HARRISON MONUMENT AS THE BEST EVIDENCE OF THE CORNER LOCATION. SET 4 NEW TIES AND MEASURED TO THE TIES.



LOCATION
(INDICATE CORNER BY "X")

SEAL:

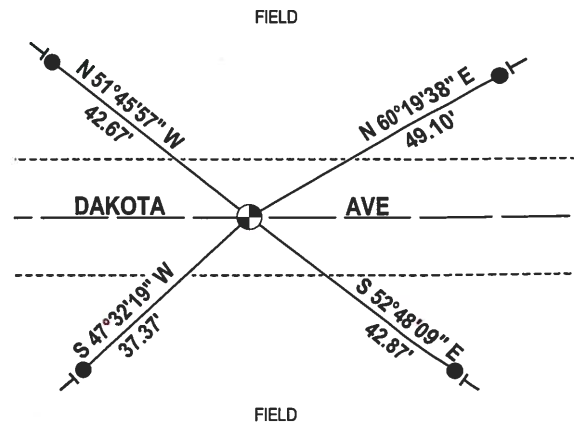
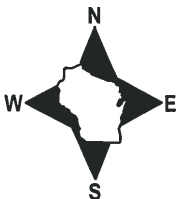


DATA SHOWN HERE ON THIS TIE SHEET IS CORRECT AND COMPLETE TO THE BEST OF MY KNOWLEDGE AND BELIEF.

PROFESSIONAL LAND SURVEYOR

DATE 2-2-18

- TIE SKETCH



- 3/4" x 18" IRON REBAR SET, 1.50#/FT
- ⊕ HARRISON FOUND
- VINYL "T" POST

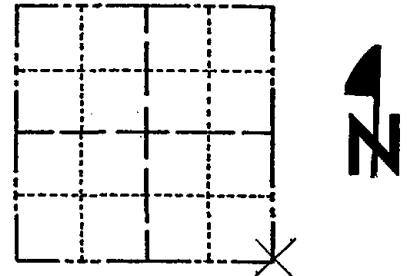
Government Land Corner Certificate

ADAMS County

TYPE OF MONUMENT: Harrison Standard
 STATE PLANE COORDINATES: N _____
 E _____

ELEVATION — M.S.L. DATUM: _____
 THETA ANGLE: _____
 FIELD BOOK: file PAGE _____
 DRAWN BY: K. Rogers

CORNER NO. 131
 SECTION 35
 TOWN 18
 RANGE 7



LOCATION
(Indicated by 'X')

BASIS FOR MONUMENT LOCATION

Show info such as: History of corner, with reference to Vol. and pg., dates, surveyor; exact description of monument replaced; if location computed, by taped or EDM traverse; landowner remarks, etc. (Use reverse side if necessary)

Doubled over south line of the SE $\frac{1}{4}$ of Section 36-18-7 to set this corner. This location "fit" a traverse of the entire town line to the west very well.

SEAL:



DATA SHOWN HERE ON
CERTIFIED CORRECT:

Gregory P. Rhinehart
Registered Land Surveyor

DATE: Sept. 21, 1979

TIE SKETCH

Show at least four ties, also fence lines, roads, topo, size and type of witness trees and if off road - best way to arrive at corner.

