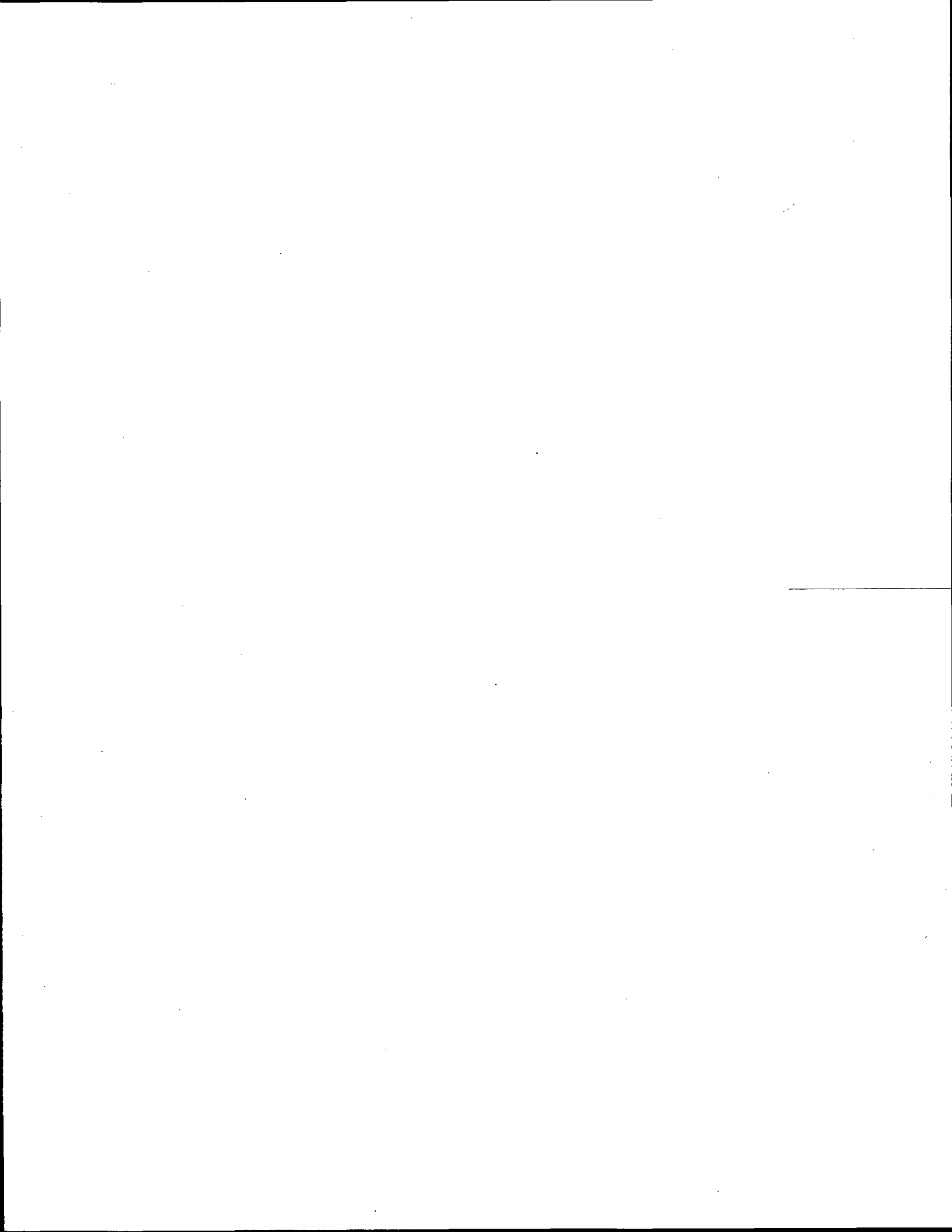


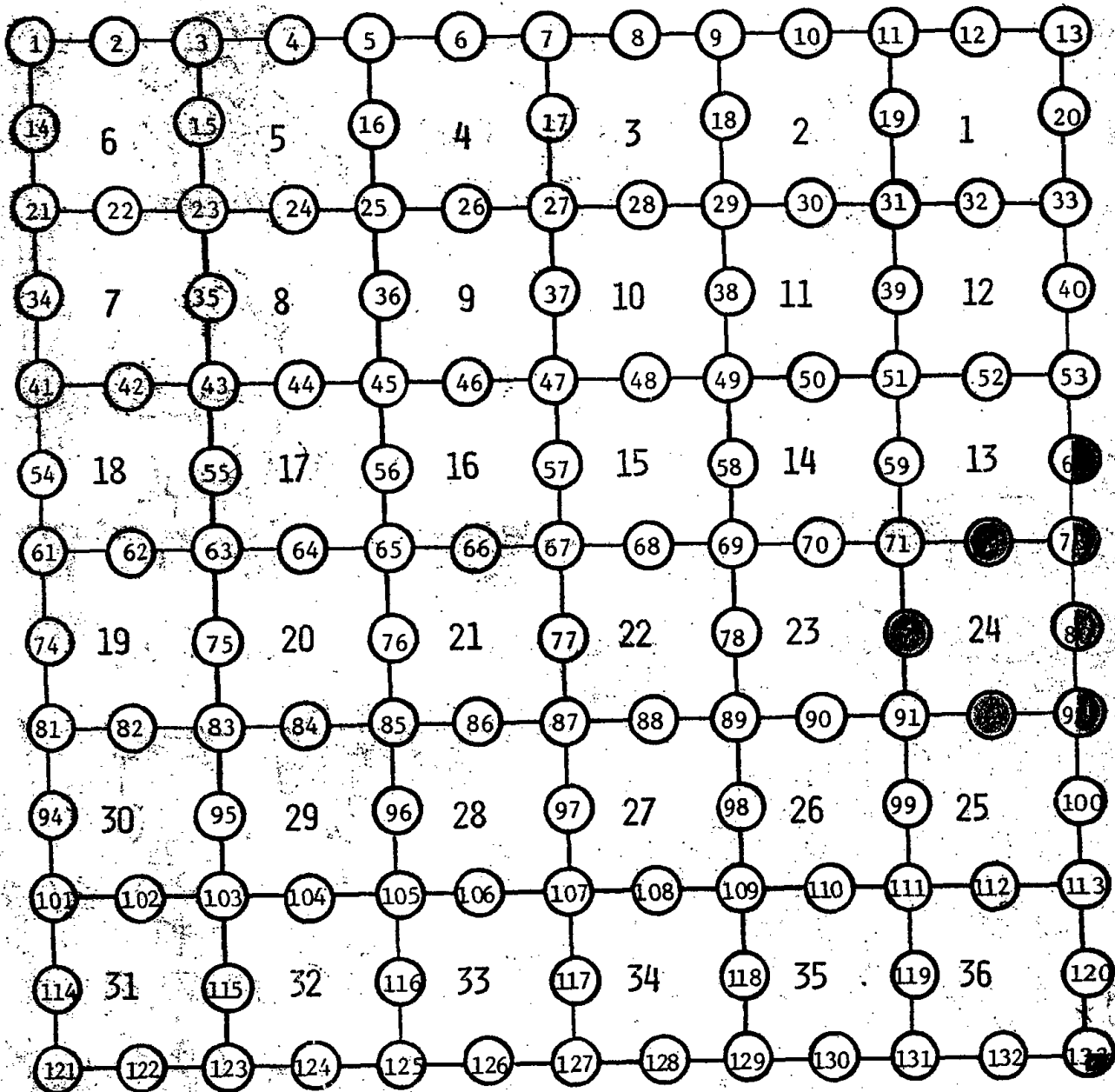
000



TOWN 19

RANGE 4

LAND CORNER MONUMENT INDEX



3/24/2001

[The rest of the page contains extremely faint and illegible text, likely bleed-through from the reverse side of the document.]



072

ADAMS COUNTY

Survey Monument Record

TYPE OF MONUMENT: Harrison

STATE PLANE COORDINATES: N \_\_\_\_\_

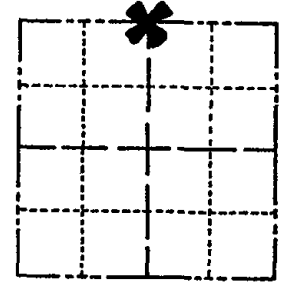
E \_\_\_\_\_

ELEVATION — M.S.L. DATUM: \_\_\_\_\_

THETA ANGLE: \_\_\_\_\_

FIELD BOOK: 38 PAGE 40

CORNER NO. 72  
SECTION 24  
TOWN 19  
RANGE 4



LOCATION  
(Indicated by 'X')

SEAL:

BASIS FOR MONUMENT LOCATION

(Use reverse side if necessary)

Show info such as: History of corner, with reference to Vol. and pg, dates, surveyor; exact description of monument replaced; if location computed, by taped or EDM traverse; landowner remarks, etc.

Excavated with backhoe. Found stain from a 4" post.  
Replaced post with Harrison. Location verified by EDM traverse of all of section.



- OK 3-14-79 RN-55
- OK 1-9-79 GR-KZ
- OK 2-11-94 GR-JG

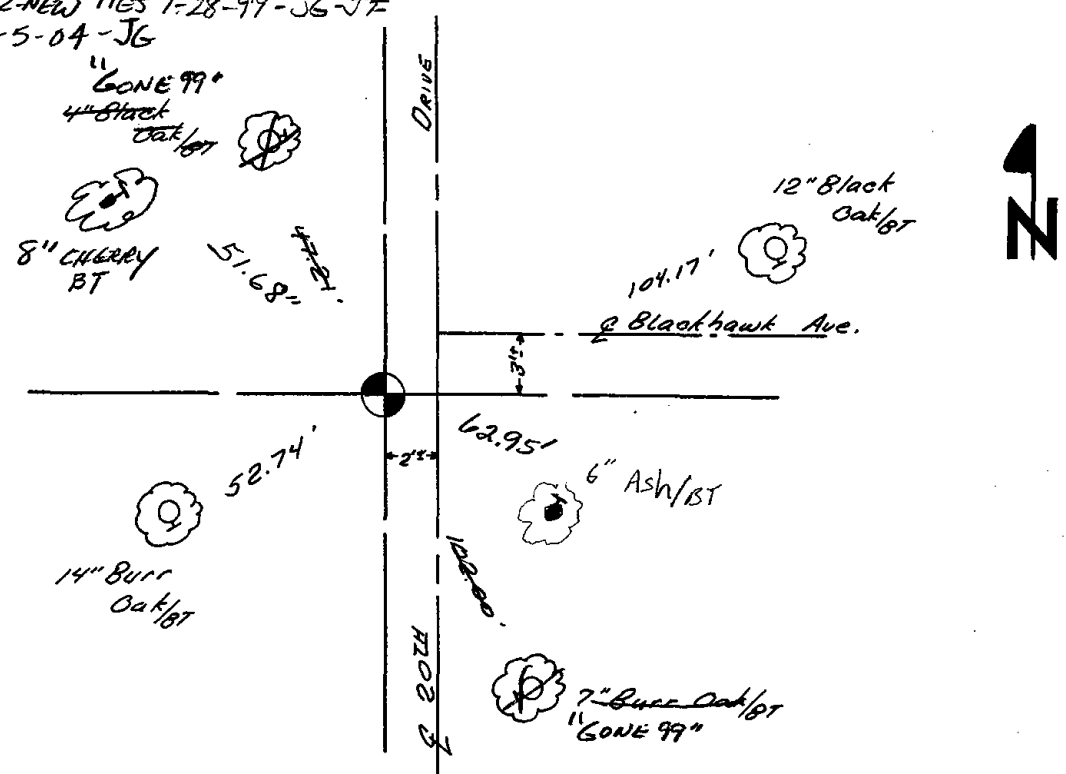
CERTIFIED CORRECT:

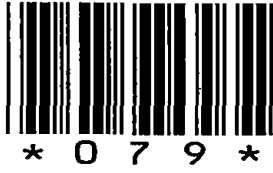
*Anthony B. Kiedrowski*  
Registered Land Surveyor  
DATE: 5/4/77

TIE SKETCH 2-GONE, 2-NEW TIES 1-28-99-JG-JF  
OK, 1-5-04-JG

(Show at least four ties)

OK 1-26-09 MS-55



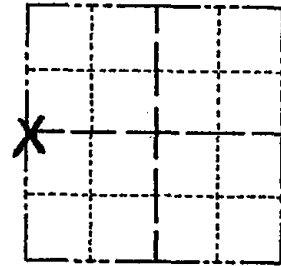


079

# Government Land Corner Certificate

ADAMS County  
 TYPE OF MONUMENT: HARRISON  
 STATE PLANE COORDINATES: N \_\_\_\_\_  
 E \_\_\_\_\_  
 ELEVATION — M.S.L. DATUM: \_\_\_\_\_  
 THETA ANGLE: \_\_\_\_\_  
 FIELD BOOK: \_\_\_\_\_ PAGE \_\_\_\_\_  
 DRAWN BY: ROBERT T. WELCH

CORNER NO. 79  
 SECTION 24  
 TOWN 19  
 RANGE 4



LOCATION  
(Indicated by 'X')

## BASIS FOR MONUMENT LOCATION

Show info such as: History of corner, with reference to Vol. and pg., dates, surveyor; exact description of monument replaced; if location computed, by taped or EDM traverse; landowner remarks, etc. (Use reverse side if necessary)

No records of any resurveys. Found evidence, old fence corner. Monumented that point after analyzing and comparing this to the original notes. (see basis for S $\frac{1}{4}$  corner of Section 24)

SEAL:



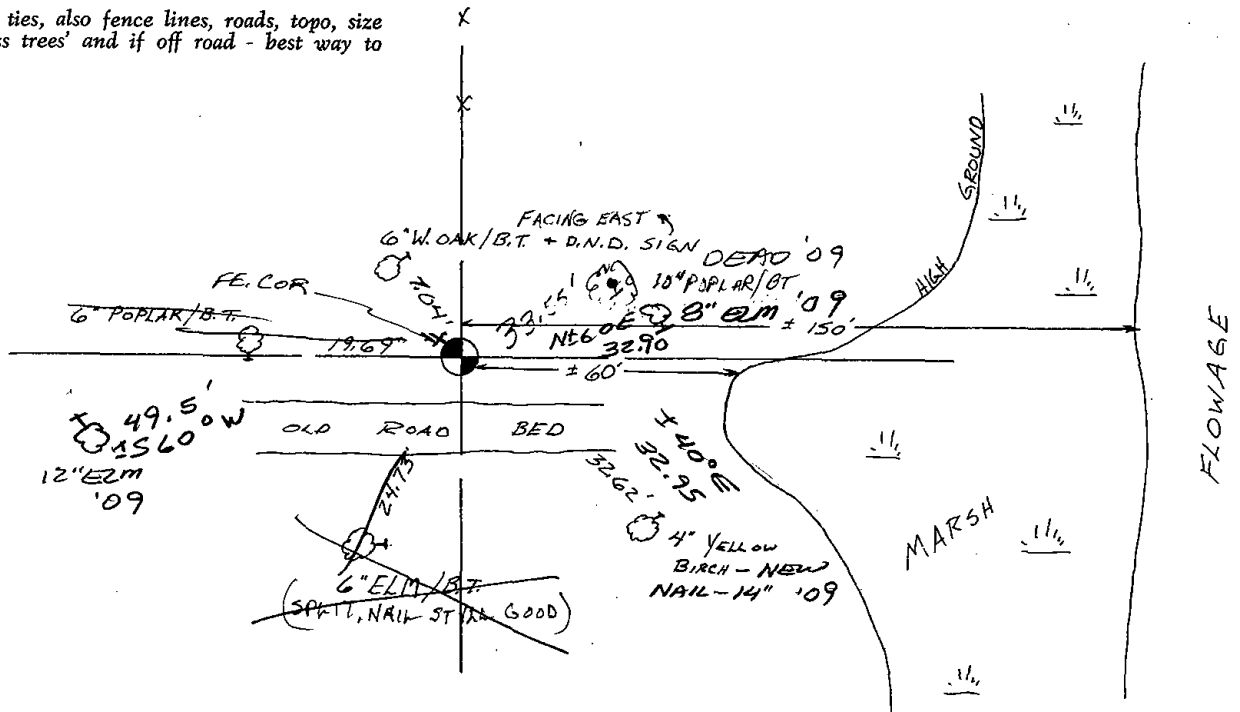
DATA SHOWN HERE ON  
CERTIFIED CORRECT:

*Anthony B. Kiedrowski*  
Registered Land Surveyor

DATE: 3-5-82

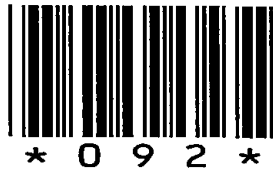
## TIE SKETCH

Show at least four ties, also fence lines, roads, topo, size and type of witness trees and if off road - best way to arrive at corner.







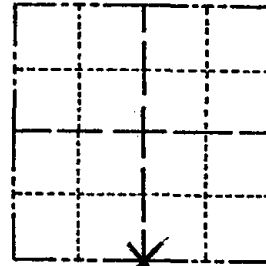


092

# Government Land Corner Certificate

ADAMS County  
 TYPE OF MONUMENT: HARRISON  
 STATE PLANE COORDINATES: N \_\_\_\_\_  
 E \_\_\_\_\_  
 ELEVATION — M.S.L. DATUM: \_\_\_\_\_  
 THETA ANGLE: \_\_\_\_\_  
 FIELD BOOK: \_\_\_\_\_ PAGE \_\_\_\_\_  
 DRAWN BY: ROBERT T. WELCH

CORNER NO. 92  
 SECTION 24  
 TOWN 19  
 RANGE 4



LOCATION  
 (Indicated by 'X')

SEAL:



## BASIS FOR MONUMENT LOCATION

Show info such as: History of corner, with reference to Vol. and pg., dates, surveyor; exact description of monument replaced; if location computed, by taped or EDM traverse; landowner remarks, etc. (Use reverse side if necessary)

No record of any resurveys. This corner is set on a straight line and equidistant between the monument at the SE corner of this Section and the SW corner of this Section.

The theoretical <sup>SW</sup> corner was set as follows:

The North line of the NE 1/4 of this Section was extended and doubled to the West to establish the NW corner of this Section. The line and distance from the theoretical NW corner to the W 1/2 corner was doubled and extended South to establish the theoretical SW corner of this Section. This gives us dimensions all the way around the Section which are quite compatible with the original government survey notes.

DATA SHOWN HERE ON CERTIFIED CORRECT:

*Anthony B. Kiedrowski*  
Registered Land Surveyor

DATE: 3-5-82

## TIE SKETCH

Show at least four ties, also fence lines, roads, topo, size and type of witness trees and if off road - best way to arrive at corner.

