

## PUBLIC LAND SURVEY MONUMENT RECORD

TYPE OF MONUMENT: HARRISON (BROKEN-TOP)  
 ADAMS COUNTY COORDINATES, NAD 83 (2007)

N. 261684.956

E. 492045.031

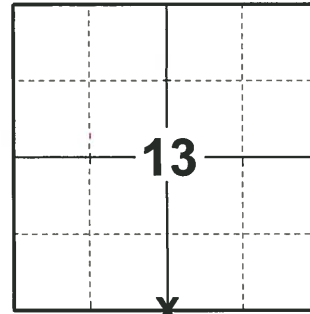
ELEVATION- - - - - DATUM - - - - -

FIELD WORK DATE: 03/19/2019

### BASIS FOR MONUMENT LOCATION

1977 - PLS 878 EXCAVATED WITH BACKHOE. FOUND STAIN FROM A 4" POST. REPLACED POST WITH HARRISON. LOCATION VERIFIED BY EDM TRAVERSE OF ALL OF SECTION.

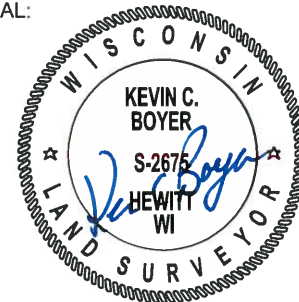
2019 - PLS 2675 FOUND HARRISON (BROKEN-TOP) 6" BELOW ROAD SURFACE AND 3 WITNESSES. THE MONUMENT AGREES WITH ALL 3 WITNESSES. ACCEPTED HARRISON (BROKEN-TOP) AS CORNER LOCATION. SET 4 NEW TIES AND MEASURED TO EXISTING WITNESSES. .



**LOCATION**

(INDICATE CORNER BY "X")

SEAL:



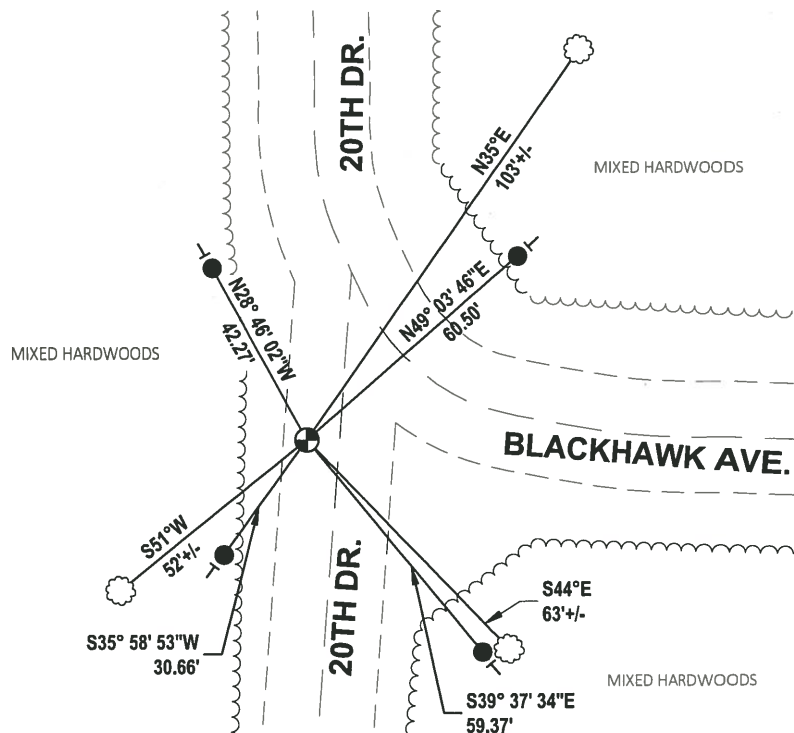
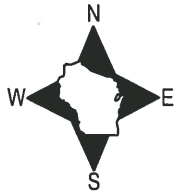
DATA SHOWN HERE ON THIS TIE SHEET IS CORRECT AND COMPLETE TO THE BEST OF MY KNOWLEDGE AND BELIEF.

PROFESSIONAL LAND SURVEYOR

DATE 5/1/19

### - TIE SKETCH

NOTE: THE CORNER LANDS 5± SOUTH OF CENTERLINE OF BLACKHAWK AND 3± WEST OF CENTERLINE OF 20TH DR.



- SET 3/4" x 18" IRON REBAR, 1.50#/FT
- ⊕ FOUND HARRISON MONUMENT (BROKEN-TOP)
- ┆ VINYL "T" POST
- ☼ WITNESS TREE

ADAMS COUNTY

Survey Monument Record

TYPE OF MONUMENT: Harrison

STATE PLANE COORDINATES: N \_\_\_\_\_

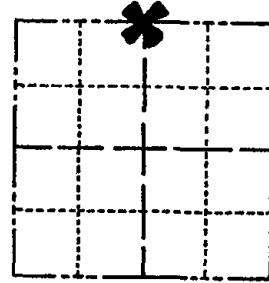
E \_\_\_\_\_

ELEVATION — M.S.L. DATUM: \_\_\_\_\_

THETA ANGLE: \_\_\_\_\_

FIELD BOOK: 38 PAGE 40

CORNER NO. 72  
SECTION 24  
TOWN 19  
RANGE 4



LOCATION  
(Indicated by 'X')

SEAL:



BASIS FOR MONUMENT LOCATION

(Use reverse side if necessary)

Show info such as: History of corner, with reference to Vol. and pg, dates, surveyor; exact description of monument replaced; if location computed, by taped or EDM traverse; landowner remarks, etc.

Excavated with backhoe. Found stain from a 4" post.  
Replaced post with Harrison. Location verified by EDM traverse of all of section.

- OK 3-14-79 RN-55
- OK 1-9-79 GR-KZ
- OK 2-11-94 GR-JG

CERTIFIED CORRECT:

*Anthony B. Kiedrowski*  
Registered Land Surveyor  
DATE: 5/4/77

TIE SKETCH 2-GONE, 2-NEW TIES 1-28-99-JG-JF  
OK, 1-5-04-JG

(Show at least four ties)

OK 1-26-09 MS-55

