

PUBLIC LAND SURVEY MONUMENT RECORD

TYPE OF MONUMENT: **2-3/8" O.D. IRON PIPE W/ALUMINUM CAP (MEANDER CORNER)**
 ADAMS COUNTY COORDINATES, NAD 83 (2007)

N. 287503.377

E. 505770.071

ELEVATION- _____ DATUM _____

FIELD WORK DATE: 02/08/2018

BASIS FOR MONUMENT LOCATION

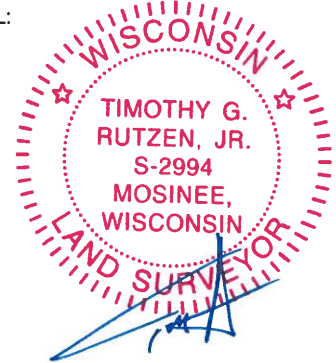
1983 - PLS 1444 FOUND A 2" IRON PIPE THAT FITS THE DISTANCES INDICATED BY SEVERAL SECTION SUMMARIES AS BEING A 40 CORNER. ACCEPTED AS THE CORNER AND USED AS THE MEANDER CORNER. SET AN ALUMINUM CAP WAS SET INSIDE OF THE 2" IRON PIPE.

2018 - PLS 2994 FOUND A 2-3/8" O.D. IRON PIPE WITH AN ALUMINUM CAP 2" BELOW THE GROUND SURFACE, 1 PROPERTY IRON AND 2 WITNESS TREES. THE MONUMENT AGREES WITH THE EXISTING WITNESS TREES. ACCEPTED THE 2-3/8" O.D. IRON PIPE WITH AN ALUMINUM CAP AS THE MEANDER CORNER LOCATION. SET 3 NEW TIES AND MEASURED TO A PROPERTY IRON AND WITNESS TREES.



LOCATION
 (INDICATE CORNER BY "X")

SEAL:



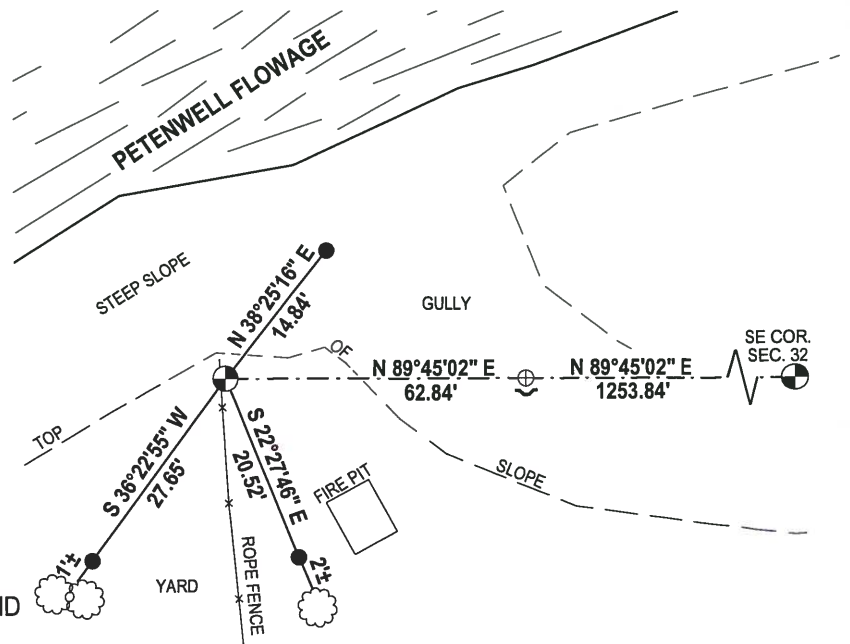
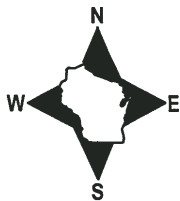
DATA SHOWN HERE ON THIS TIE SHEET IS CORRECT AND COMPLETE TO THE BEST OF MY KNOWLEDGE AND BELIEF.

PROFESSIONAL LAND SURVEYOR

DATE 3-1-18

- TIE SKETCH

NOTE: THE CORNER FALLS 184± WEST OF THE CENTERLINE OF DWY #1773 AND 5± SOUTH OF THE TOP OF SLOPE.

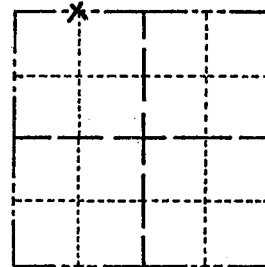


- 3/4" x 18" IRON REBAR SET, 1.50#/FT
- ⊕ 1" IRON ROD FOUND
- ⊙ 2-3/8" O.D. IRON PIPE W/ALUMINUM CAP FOUND
- ⌵ STEEL FENCE POST
- ☁ WITNESS TREE FOUND

Government Land Corner Certificate

Adams County
 TYPE OF MONUMENT: 2" Iron Pipe found WITNESS CORNER
 STATE PLANE COORDINATES: N _____
 E _____
 ELEVATION — M.S.L. DATUM: _____
 THETA ANGLE: _____
 FIELD BOOK: 92 PAGE 144
 DRAWN BY: TJH

CORNER NO. 57
 SECTION 4
 TOWN 19
 RANGE 5



LOCATION
(Indicated by 'X')

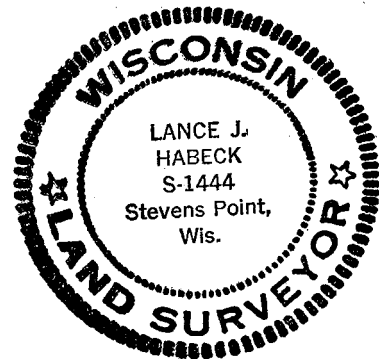
BASIS FOR MONUMENT LOCATION

Show info such as: History of corner, with reference to Vol. and pg., dates, surveyor; exact description of monument replaced; if location computed, by taped or EDM traverse; landowner remarks, etc. (Use reverse side if necessary)

Found a 2" iron pipe which fits distances indicated by several Section summaries as being a 40 corner. Corner accepted and used as meander corner. A aluminum cap was set inside this 2" iron pipe.

4-12-84 OK D.K. - S.S.
 TIES OK 12-28-88 SS
 OK 1 MARCH 94 CR-JG
 OK, 2-8-99 - JG-SS
 1-CONE, 1-NEW, 1-15-04, JG-JS
 3 TIES/MON OK 2-12-09, SS

SEAL:



DATA SHOWN HERE ON
CERTIFIED CORRECT:

Lance J. Habeck
 Registered Land Surveyor

DATE: 1/5/83

TIE SKETCH

Show at least four ties, also fence lines, roads, topo, size and type of witness trees' and if off road - best way to arrive at corner.

