

PUBLIC LAND SURVEY MONUMENT RECORD

TYPE OF MONUMENT: HARRISON
 ADAMS COUNTY COORDINATES, NAD 83 (2007)

N. 287549.322

E. 520283.635

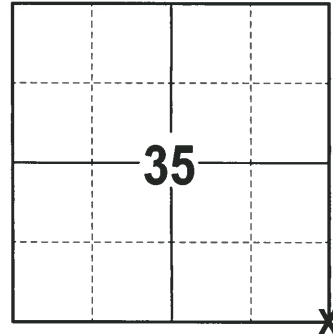
ELEVATION- - - DATUM - -

FIELD WORK DATE: 02/12/2018

BASIS FOR MONUMENT LOCATION

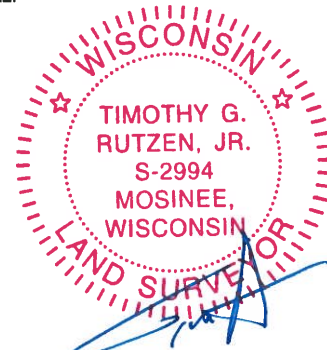
2015 - PLS 2452 FOUND A HARRISON MONUMENT 6"± BELOW GRADE OF THE ASPHALT ROAD PER TIE SHEET BY ANTHONY B. KIEDROWSKI, DATED 7-7-80. HE ALSO FOUND THE 3/4" IRON ROD NORTHEASTERLY OF THE HARRISON MONUMENT AND THE 3/4" IRON ROD SOUTHEASTERLY OF THE HARRISON MONUMENT. ACCEPTED THE HARRISON MONUMENT AND PLACED 2 ADDITIONAL TIES. DATE OF FIELD SURVEY & MONUMENT RECOVERY WAS SEPTEMBER 03, 2015.

2018 - PLS 2994 FOUND A HARRISON MONUMENT 12" BELOW THE ROAD SURFACE AND 4 TIES. THE MONUMENT AGREES WITH THE EXISTING TIES. ACCEPTED THE HARRISON MONUMENT AS THE CORNER LOCATION AND RE-MEASURED TO THE EXISTING TIES.



LOCATION
 (INDICATE CORNER BY "X")

SEAL:



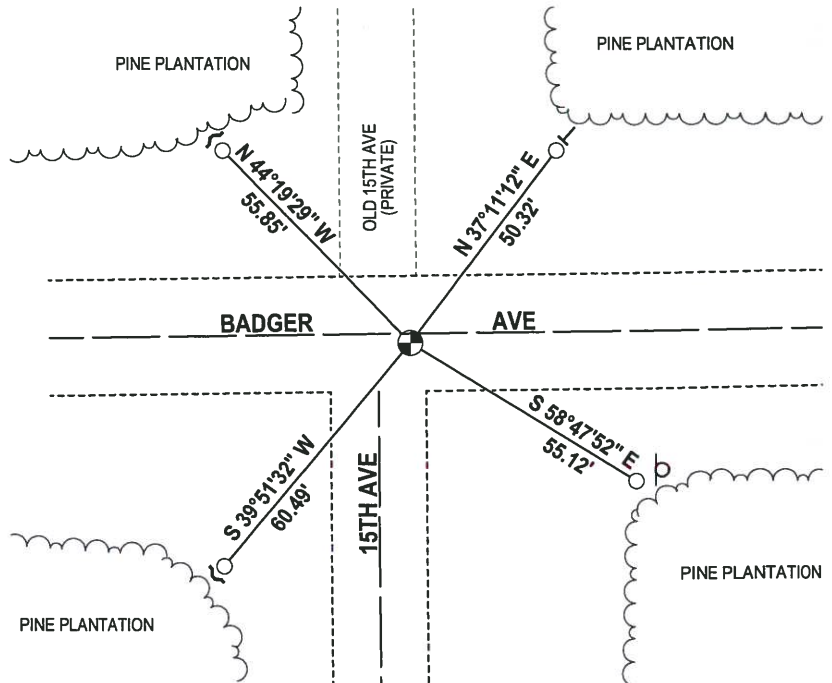
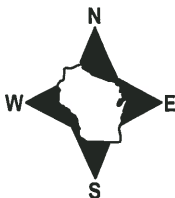
DATA SHOWN HERE ON THIS TIE SHEET IS CORRECT AND COMPLETE TO THE BEST OF MY KNOWLEDGE AND BELIEF.

PROFESSIONAL LAND SURVEYOR

DATE 3-1-18

- TIE SKETCH -

NOTE: THE CORNER FALLS 2"± SOUTH OF THE CENTERLINE OF BADGER AVE AND 7"± EAST OF THE CENTERLINE OF 15TH AVE.



- 3/4" IRON ROD FOUND
- HARRISON FOUND
- ~ STEEL FENCE POST
- └ VINYL "T" POST
- ⊓ ATV SIGN