

PUBLIC LAND SURVEY MONUMENT RECORD

TYPE OF MONUMENT: HARRISON
ADAMS COUNTY COORDINATES, NAD 83 (1905)

N. 284880.412

E. 504438.621

ELEVATION- - - - DATUM - - - -

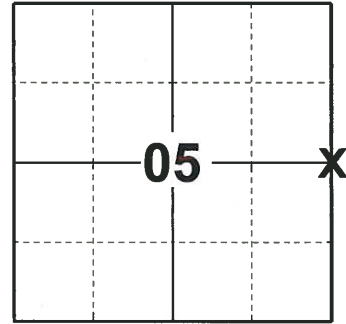
FIELD WORK DATE: 10/07/2019

BASIS FOR MONUMENT LOCATION

1977 - PLS 1103 RAN EDM/T2 TRAVERSE AROUND SECTION 4 TO DETERMINE SEARCH AREAS FOR INVESTIGATION. INVESTIGATION YIELD TWO ADAMS COUNTY WITNESS MONUMENTS, BUT WERE UNABLE TO FIND ANY RECORDS OF WHO SET THE MONUMENTS OR WHEN. EACH MONUMENT SCRIBED THUS: 1/4 4 B 40 WITH ARROW POINTING IN DIRECTION OF CORNER. MONUMENTED INDICATED LOCATION WITH HARRISON MONUMENT IN SPRING OF 1977.

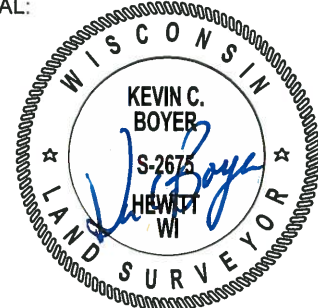
1977 - PLS 878 FOUND CAPPED WITNESS PIPE SET BY PERSONS UNKNOWN AND SET CORNER FROM THESE.

2019 - PLS 2675 FOUND HARRISON MONUMENT 8"± BELOW THE ROAD SURFACE, 1 TIE AND 1 WITNESS. ACCEPTED THE HARRISON MONUMENT AS THE CORNER LOCATION. SET 2 NEW TIES AND MEASURED TO THE EXISTING TIE, WITNESS, AND A FOUND PROPERTY IRON.



LOCATION
(INDICATE CORNER BY "X")

SEAL:



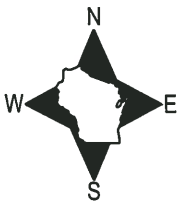
DATA SHOWN HERE ON THIS TIE SHEET IS CORRECT AND COMPLETE TO THE BEST OF MY KNOWLEDGE AND BELIEF.

PROFESSIONAL LAND SURVEYOR

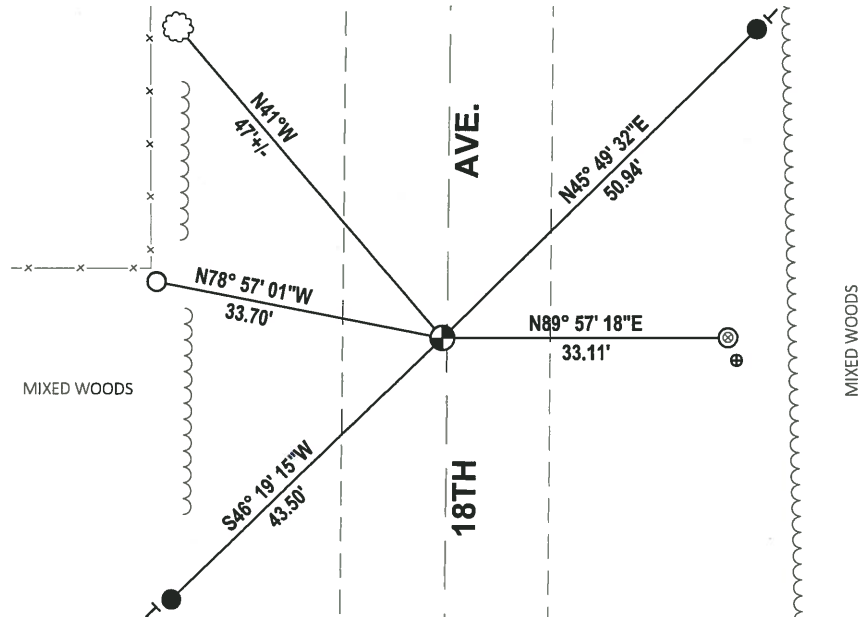
DATE 11/25/19

TIE SKETCH

NOTE: THE CORNER FALLS 6"± WEST OF 18TH AVE. CENTERLINE.



- SET 3/4" x 18" IRON REBAR, 1.50#/FT
- FOUND 3/4" IRON ROD
- ⊗ FOUND 1-1/2" O.D. IRON PIPE
- ⊕ FOUND HARRISON MONUMENT
- ⊙ 4" WOODEN POST
- ┌ VINYL "T" POST
- ☁ WITNESS TREE



ADAMS COUNTY

Survey Monument Record

TYPE OF MONUMENT: Harrison Monument

STATE PLANE COORDINATES: N _____

E _____

ELEVATION — M.S.L. DATUM: _____

THETA ANGLE: _____

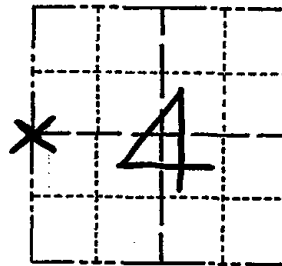
FIELD BOOK: 38 PAGE 30

CORNER NO. 16

SECTION 4

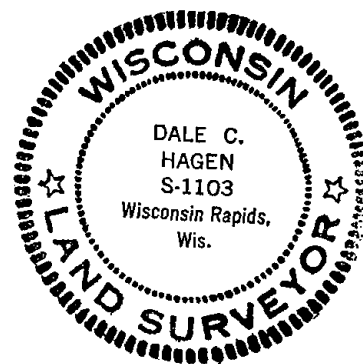
TOWN 19

RANGE 5



LOCATION
(Indicated by 'X')

SEAL:



BASIS FOR MONUMENT LOCATION

(Use reverse side if necessary)

Show info such as: History of corner, with reference to Vol. and pg, dates, surveyor; exact description of monument replaced; if location computed, by taped or EDM traverse; landowner remarks, etc.

Ran EDM/T2 traverse around Section 4 to determine search areas for investigation.

Investigation yielded two Adams County Concrete witness monuments, but were unable to find any records of who set the monuments or when.

Each monument scribed thus: $\frac{1}{4}$ 4
B 40

with arrow pointing in direction of corner.

Monumented indicated location with Harrison monument in Spring of 1977.

OK 3-14-79 RN-SS
2-NEW 1-15-04- JG-SS
OK 2-12-09 SS

CERTIFIED CORRECT:

Dale C Hagen
Registered Land Surveyor

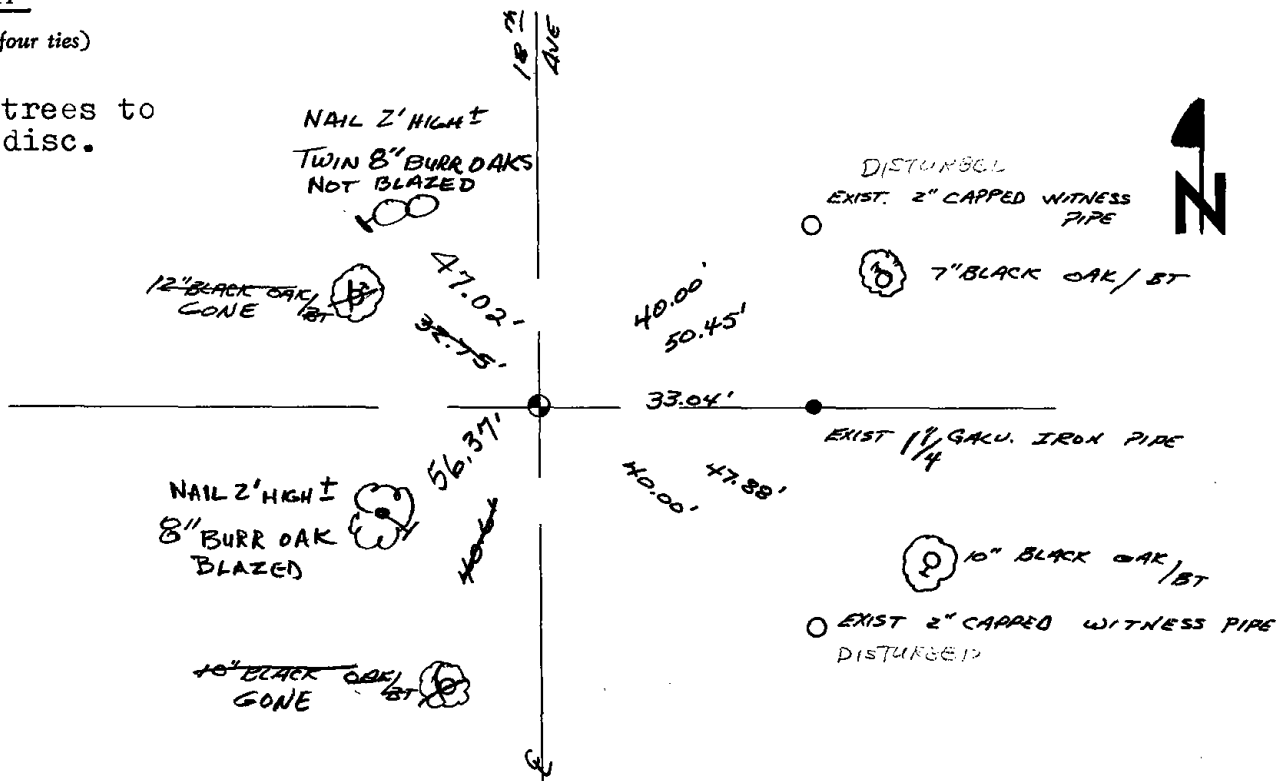
DATE: 7-5-77

TIE SKETCH

(Show at least four ties)

NOTE

Ties in trees to nail in disc.



ADAMS COUNTY

Survey Monument Record

TYPE OF MONUMENT: HARRISON STANDARD

STATE PLANE COORDINATES: N _____

E _____

ELEVATION — M.S.L. DATUM: _____

THETA ANGLE: _____

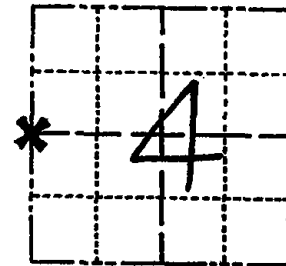
FIELD BOOK: 54 PAGE 11

CORNER NO. 16

SECTION 4

TOWN 19

RANGE 5



LOCATION
(Indicated by 'X')

SEAL:



BASIS FOR MONUMENT LOCATION

(Use reverse side if necessary)

Show info such as: History of corner, with reference to Vol. and pg, dates, surveyor; exact description of monument replaced; if location computed, by taped or EDM traverse; landowner remarks, etc.

Found capped witness pipe set by persons unknown and set corner from these.

Ok 4-12-84 DK-SS

TIES TO SURVEY ARE GONE MON. OK 12-29-93 SS

OK - 2-11-94 GR-JG

OK, 2-8-99 JG-SS

CERTIFIED CORRECT:

Anthony B. Kiedrowski
Registered Land Surveyor

DATE: 9/6/77

TIE SKETCH

(Show at least four ties)

