

## PUBLIC LAND SURVEY MONUMENT RECORD

TYPE OF MONUMENT: HARRISON  
 ADAMS COUNTY COORDINATES, NAD 83 (1905)

N. 284861.664

E. 520290.960

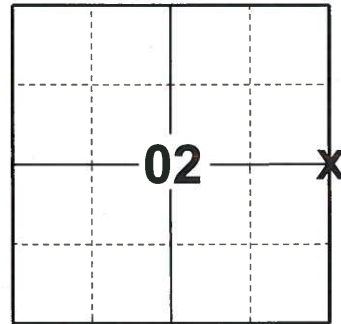
ELEVATION- - - - DATUM - - - -

FIELD WORK DATE: 09/30/2019

### BASIS FOR MONUMENT LOCATION

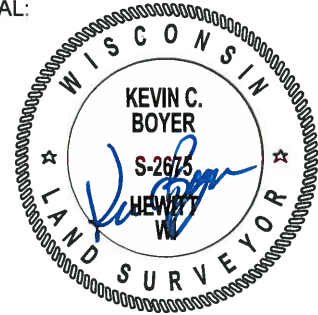
1979 - PLS 878 SCRAPED AREA WITH FRONT END LOADER. FOUND BOTTOM 15" OF 4" DIAMETER DUG IN POST. ACCEPTED THIS AS THE CORNER AFTER CHECKING LOCATION BY AN EDM TRAVERSE OF THE ENTIRE SECTION. REPLACED POST WITH HARRISON.

2019 - PLS 2675 FOUND HARRISON MONUMENT 4"± BELOW THE ROAD SURFACE, 2 TIES AND 2 WITNESSES. THE MONUMENT AGREES WITH ALL THE EXISTING TIES AND WITNESSES. ACCEPTED THE HARRISON MONUMENT AS THE CORNER LOCATION. SET 2 NEW TIES AND MEASURED TO THE EXISTING TIES AND WITNESSES.



**LOCATION**  
 (INDICATE CORNER BY "X")

SEAL:



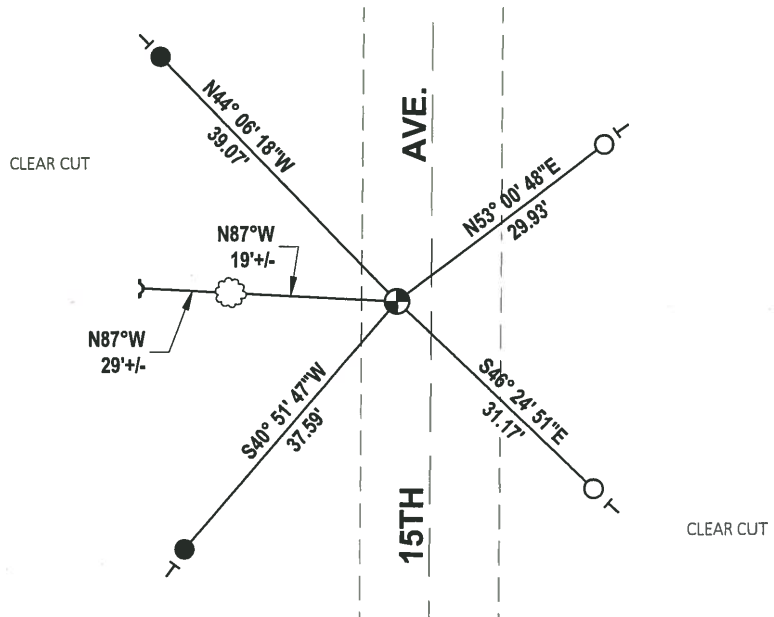
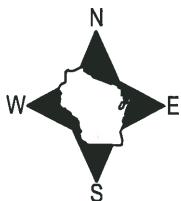
DATA SHOWN HERE ON THIS TIE SHEET IS CORRECT AND COMPLETE TO THE BEST OF MY KNOWLEDGE AND BELIEF.

PROFESSIONAL LAND SURVEYOR

DATE 11/25/19

### TIE SKETCH

NOTE: THE CORNER FALLS 3.8'± WEST OF 15TH AVE. CENTERLINE.

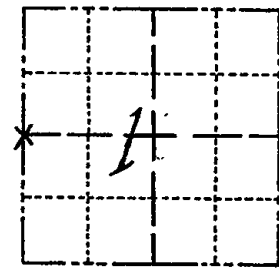


- SET 3/4" x 18" IRON REBAR, 1.50#/FT
- FOUND 3/4" IRON ROD
- ⊕ FOUND HARRISON MONUMENT
- ~ STEEL FENCE POST
- VINYL "T" POST

# Government Land Corner Certificate

Adams County  
 TYPE OF MONUMENT: Harrison  
 STATE PLANE COORDINATES: N \_\_\_\_\_  
 E \_\_\_\_\_  
 ELEVATION — M.S.L. DATUM: \_\_\_\_\_  
 THETA ANGLE: \_\_\_\_\_  
 FIELD BOOK: 74 (102) PAGE 127 (58)  
 DRAWN BY: NJ

CORNER NO. 19  
 SECTION 1  
 TOWN 19  
 RANGE 5



LOCATION  
(Indicated by 'X')

## BASIS FOR MONUMENT LOCATION

Show info such as: History of corner, with reference to Vol. and pg., dates, surveyor; exact description of monument replaced; if location computed, by taped or EDM traverse; landowner remarks, etc. (Use reverse side if necessary)

Scraped area with front end loader. Found bottom 15" of 4" diameter dug in post. Accepted this as the corner after checking location by an EDM traverse of the entire section. Replaced post with Harrison.

SEAL:



DATA SHOWN HERE ON  
CERTIFIED CORRECT:

Anthony B. Kiedrowski  
Registered Land Surveyor

DATE: 11/1/79

All ties are gone 4-17-84  
 New ties set same date include 3 steel fence posts.  
 see sketch on back of this sheet

## TIE SKETCH

Show at least four ties, also fence lines, roads, topo, size and type of witness trees' and if off road - best way to arrive at corner.

