

## PUBLIC LAND SURVEY MONUMENT RECORD

TYPE OF MONUMENT: HARRISON  
ADAMS COUNTY COORDINATES, NAD 83 (1905)

N. 282219.331

E. 517633.413

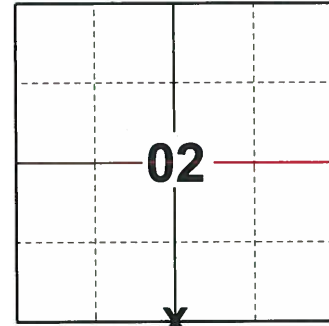
ELEVATION- - - - - DATUM - - - - -

FIELD WORK DATE: 09/30/2019

### BASIS FOR MONUMENT LOCATION

1980 - PLS 1478 SET EQUIDISTANT AND ON LINE BETWEEN ADJACENT SECTION CORNERS. ABK EXCAVATED WITH THE BACKHOE AND FOUND NO EVIDENCE OF ANY PREVIOUS MONUMENTATION. NO RECORD OF ANY SURVEYS SUBSEQUENT TO THE ORIGINAL WAS FOUND.

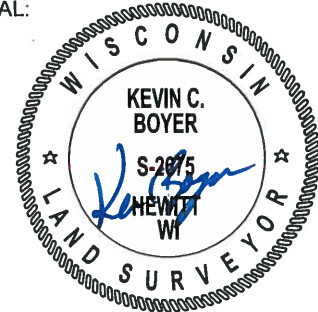
2019 - PLS 2675 FOUND HARRISON MONUMENT 3"± BELOW THE ROAD SURFACE, 2 TIES AND 2 WITNESSES. THE MONUMENT AGREES WITH ALL TIES AND WITNESSES. ACCEPTED THE HARRISON MONUMENT AS THE CORNER LOCATION. SET 2 NEW TIES AND MEASURED TO THE EXISTING TIES AND WITNESSES.



**LOCATION**

(INDICATE CORNER BY "X")

SEAL:



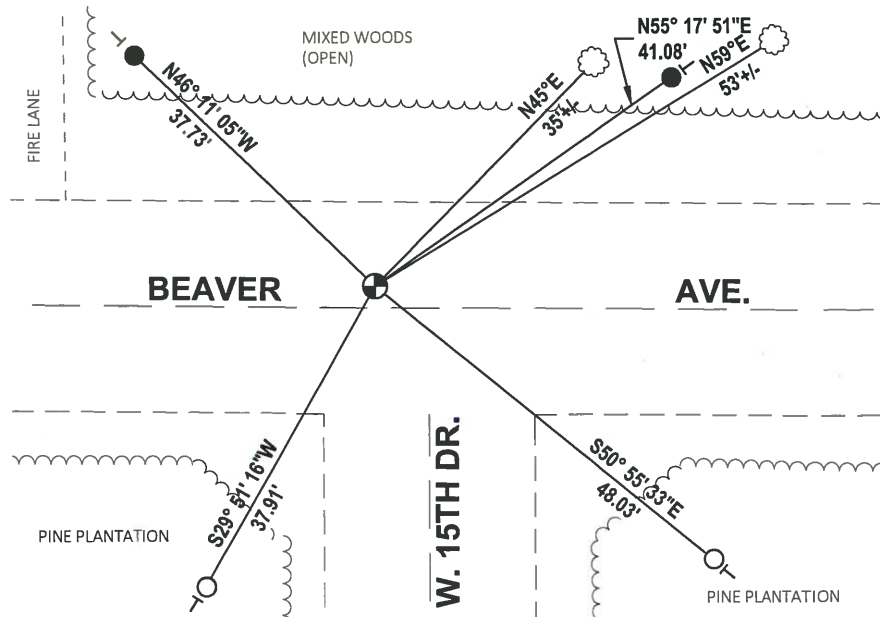
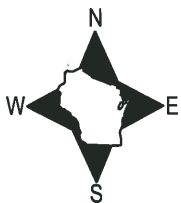
DATA SHOWN HERE ON THIS TIE SHEET IS CORRECT AND COMPLETE TO THE BEST OF MY KNOWLEDGE AND BELIEF.

PROFESSIONAL LAND SURVEYOR

DATE 11/25/19

### - TIE SKETCH

NOTE: THE CORNER FALLS 2.6"± NORTH OF BEAVER AVE. CENTERLINE.



- FOUND 3/4" IRON ROD
- SET 3/4" x 18" IRON REBAR, 1.50#/FT
- ⊕ FOUND HARRISON MONUMENT
- ┌ VINYL "T" POST
- WITNESS TREE

## PUBLIC LAND SURVEY MONUMENT RECORD

TYPE OF MONUMENT: HARRISON  
ADAMS COUNTY COORDINATES, NAD 83 (1905)

N. 282219.331

E. 517633.413

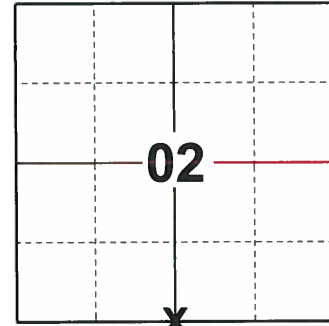
ELEVATION- - - - - DATUM - - - - -

FIELD WORK DATE: 09/30/2019

### BASIS FOR MONUMENT LOCATION

1980 - PLS 1478 SET EQUIDISTANT AND ON LINE BETWEEN ADJACENT SECTION CORNERS. ABK EXCAVATED WITH THE BACKHOE AND FOUND NO EVIDENCE OF ANY PREVIOUS MONUMENTATION. NO RECORD OF ANY SURVEYS SUBSEQUENT TO THE ORIGINAL WAS FOUND.

2019 - PLS 2675 FOUND HARRISON MONUMENT 3"± BELOW THE ROAD SURFACE, 2 TIES AND 2 WITNESSES. THE MONUMENT AGREES WITH ALL TIES AND WITNESSES. ACCEPTED THE HARRISON MONUMENT AS THE CORNER LOCATION. SET 2 NEW TIES AND MEASURED TO THE EXISTING TIES AND WITNESSES.



**LOCATION**

(INDICATE CORNER BY "X")

SEAL:



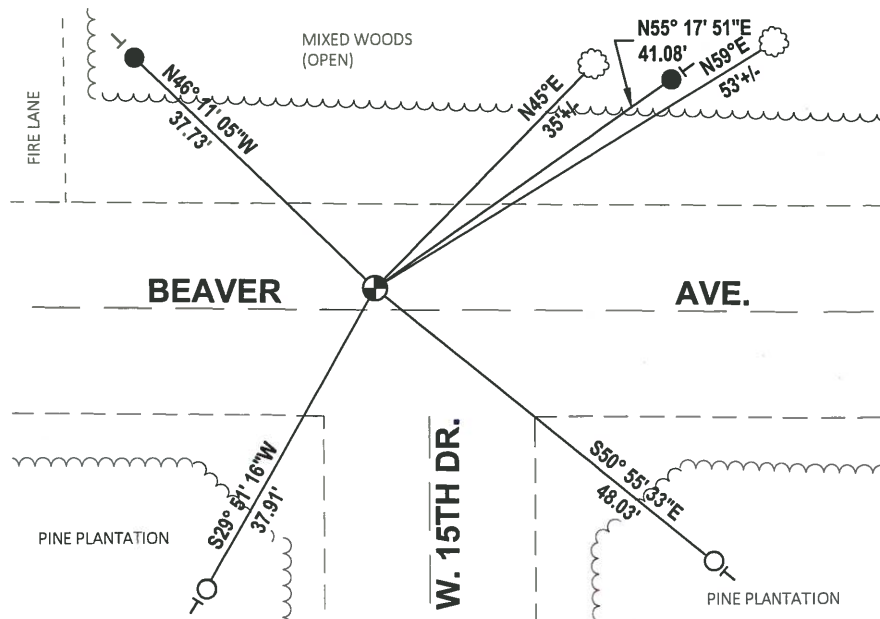
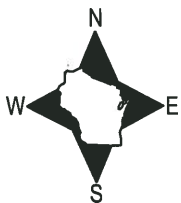
DATA SHOWN HERE ON THIS TIE SHEET IS CORRECT AND COMPLETE TO THE BEST OF MY KNOWLEDGE AND BELIEF.

PROFESSIONAL LAND SURVEYOR

DATE 11/25/19

### - TIE SKETCH

NOTE: THE CORNER FALLS 2.6"± NORTH OF BEAVER AVE. CENTERLINE.



- FOUND 3/4" IRON ROD
- SET 3/4" x 18" IRON REBAR, 1.50#/FT
- ⊕ FOUND HARRISON MONUMENT
- VINYL "T" POST
- ☁ WITNESS TREE

# Government Land Corner Certificate

ADAMS County

TYPE OF MONUMENT: HARRISON STANDARD RR - replace to be replaced

STATE PLANE COORDINATES: N \_\_\_\_\_  
E \_\_\_\_\_

ELEVATION — M.S.L. DATUM: \_\_\_\_\_

THETA ANGLE: \_\_\_\_\_

FIELD BOOK: 83 PAGE 38

DRAWN BY: R. NUBER

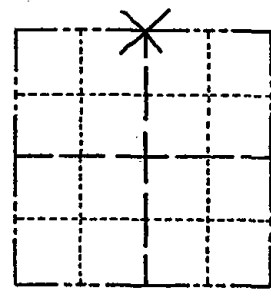
CORNER NO. 30

SECTION 11

TOWN 19

RANGE 5

SET 1 RR.  
4/8/80  
RN/SS



LOCATION  
(Indicated by 'X')

## BASIS FOR MONUMENT LOCATION

Show info such as: History of corner, with reference to Vol. and pg., dates, surveyor; exact description of monument replaced; if location computed, by taped or EDM traverse; landowner remarks, etc. (Use reverse side if necessary)

SEAL:



DATA SHOWN HEREIN  
CERTIFIED CORRECT:

*Gregory P. Rhinehart*  
Registered Land Surveyor

DATE: 1/8/1980

Set Equidistant and on line between adjacent section corners. ABK excavated with the backhoe and found no evidence of any previous monumentation. No record of any surveys subsequent to the original was found.

Ok 4-17-84 DK-SS  
" 12-28-88 SS

2 NEW TIES 1 MARCH 92 CR-JG  
1-NEW MON. OK, 2-12-98-JG  
OK, 12-31-02-JG  
3 NEW TIES 9-29-09 SS

## TIE SKETCH

Show at least four ties, also fence lines, roads, topo, size and type of witness trees and if off road - best way to arrive at corner.

